



Catalogue

2021

APAC BUILDERS EQUIPMENT CO.,LTD

Edge Protection System Brochure

VERSION
2.0



Areas where the likelihood of a fall exists, the edge protection should be used, the purpose is to prevent persons, objects, or materials from falling.

The earlier decision concerning edge protection is made, the greater the project will benefit.

APAC Builders Equipment is your expert partner in the protecting people fall from height and improving safety work zone.

Our product portfolio comprises a broad range of product systems suitable for most construction challenges.

As we have all the skills required to design and resolve all edge protection situations that might occur in a construction project, we provide technical support for our edge protection products and systems throughout the course of the construction project. We can also customize edge protection solutions based on customer needs.

APAC Builder Equipment is the vendor of some world top 50 construction companies, run by professionals who have many years of edge protection knowledge. We bring this knowledge to every project, ensuring that it runs smoothly and that we can support clients in every way possible.

Pieter Zhang
Managing Director
APAC Builders Equipment



CONTENTS

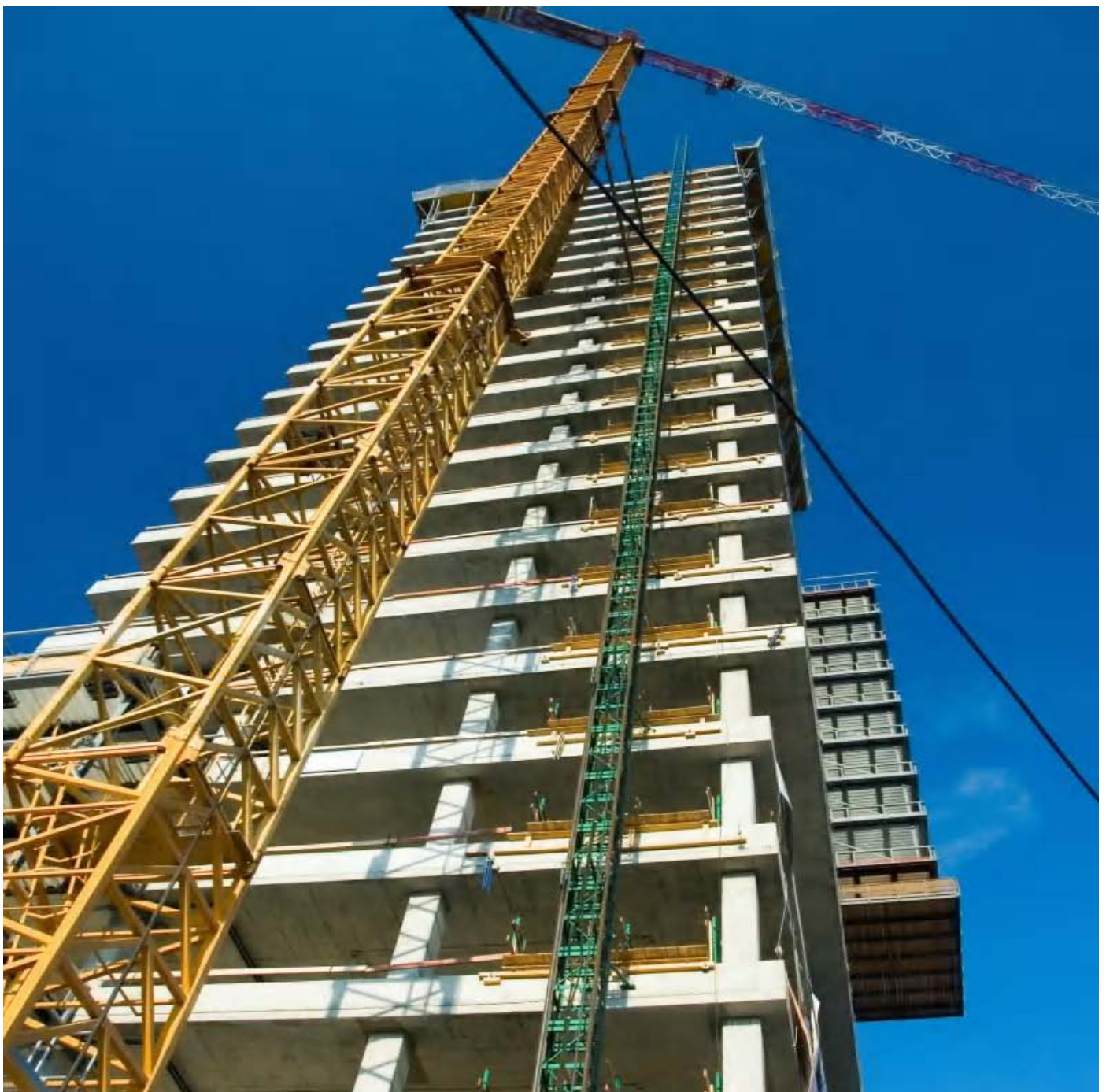
1. CONTENTS	P01-02
2. ABOUT US	P03-04
3. SLAB EDGE	P05-08
4. STAIR	P09-10
5. STEEL STRUCTURE	P11-12
6. WALKWAY	P13
7. SCAFFOLDINGS	P14
8. FORMWORK	P15-16
9. FALLING OBJECTS	P17
10. PEDESTRIAN BARRIER & FENCE	P18
11. COMPONENTS OVERVIEW	P19-31

ABOUT APAC

Headed by the industry-leading concrete frame system, our range also includes innovative solutions such as concrete frame system, steel frame system, formwork decking system, and scaffolding system solutions.

Our entire product portfolio is accompanied by an unrivaled range of attachments, fixings, posts and accessories to ensure that our products can be used universally.

With years' collective experience in the UK, Canadian, USA, UAE, Irish, and Singapore markets, APAC Systems focuses on introducing and providing the latest quality safety solutions that exceed clients' expectations.





EDGE PROTECTION ANALYSIS

Before the project work starts, and at regular intervals, the project team can analyze the project to determine progress.

This analysis relies on techniques aimed at verifying what costs the project has incurred, what activities are finished, and whether project team members have experienced problems with equipment or functions.

We cooperate with the project management to create safe work zone. We identify situations where there might be a risk of falling, and solutions are then specified at the design stage.



TECHNICAL SUPPORT

We provide technical support for our edge protection products and systems.

We have all the skills required to design and resolve all edge protection situations that might occur in a construction project. We can also customize edge protection solutions based on customer needs.

We are close to our customers. That means that your ideas and requirements quickly can be turned into prototypes that can be 3D demoed, tested, and evaluated both in our facility.



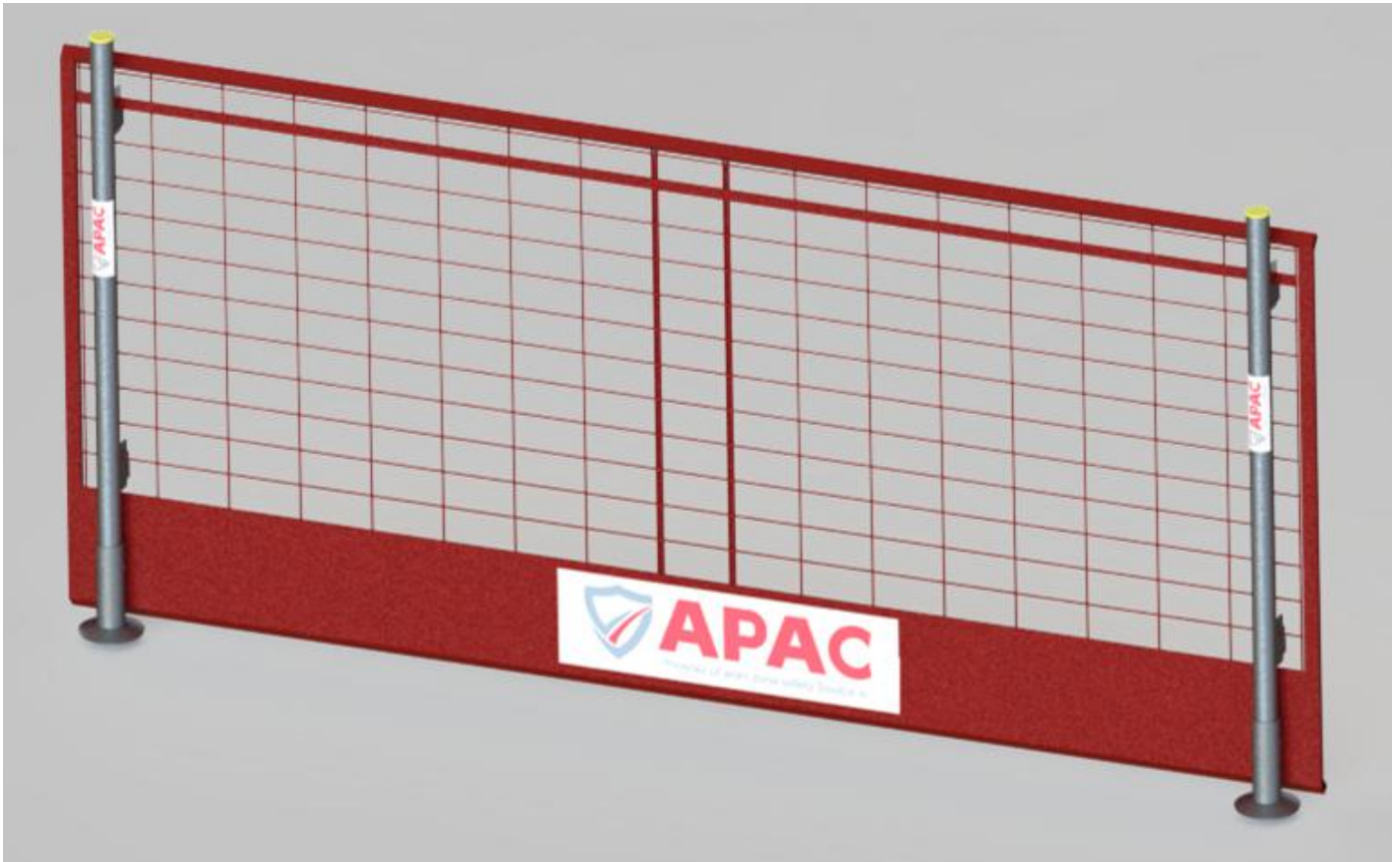
QUALITY ASSURANCE

We have established a quality assurance department to make sure that our products meet customer requirements. Based on the ISO9001 Quality Management System, our professional team strictly examines every procedure, from supplier verification to examination of raw materials, production, and finished products, to ensure the high quality of products.

We fully understand the edge protection standard such as EN13374, AS/NZS4994.1, ONTARIO REGULATION 213/91 etc for different countries.

Additionally, we also do the in-house loading capacity testing for batch orders before shipment according to our client local requirement.





SAFEDGE BOLTED DOWN SYSTEM

Slab edges are present everywhere and are a usual cause of fall accidents.

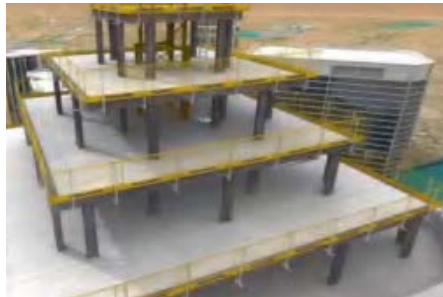
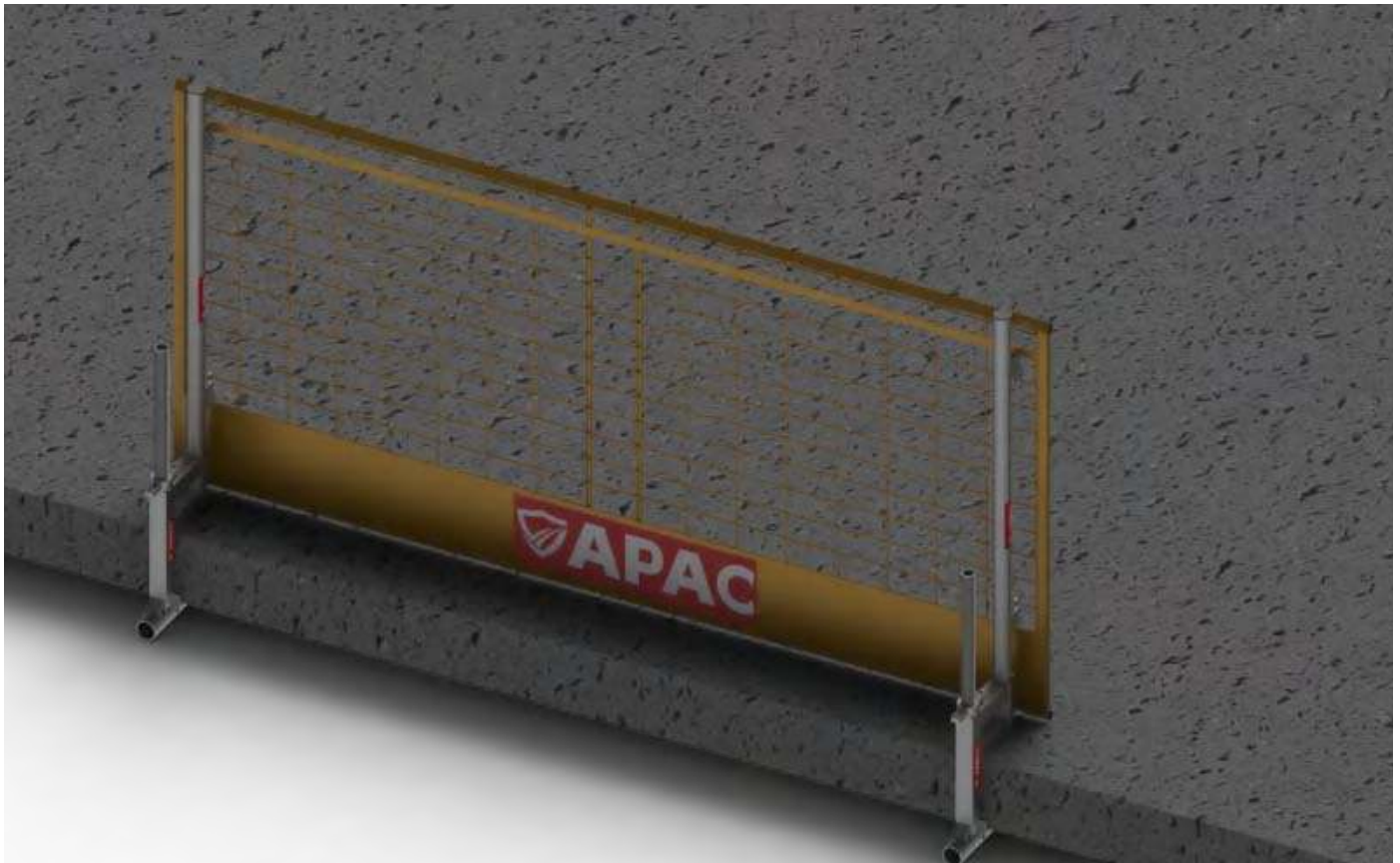
Edge protection can be installed on the slab or the outside of the slab edge.

If there are columns, they can be an alternative attachment of the edge protection.

APAC Safedge Bolted down solution is by bolting the socket base to the top of the slab to set up a system.

PRODUCTS

- Socket Base
- Safedge Post 1,2 m
- Mesh Barrier 1,3 , 2,6 m



SAFEDGE SLAB GRAB SYSTEM

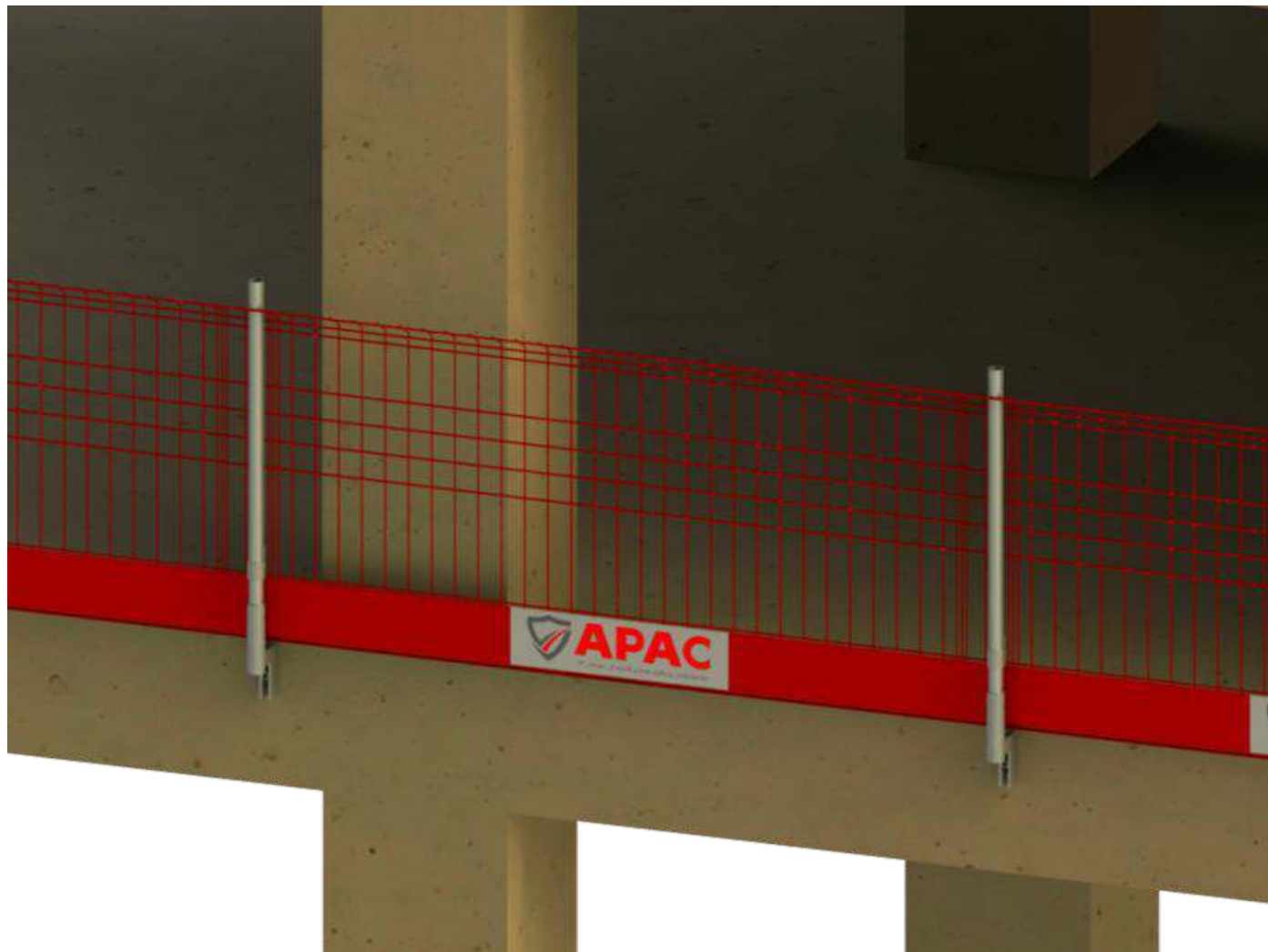
Slab Grab can be used as bracket for temporary edge protection on stairs and slab edges. By using this clamp the process of making holes is eliminated when installing edge protection.

The clamp can be swiveled and turned around and be installed in one simple operation without damaging the sensitive surface.

The clamp has an integrated bracket for Post 1,2 m and 2.6m mesh barriers are installed on the posts.

PRODUCTS

- Multi Slab Grab
- Safedge Post 1,2 m
- Mesh Barrier 1,3 , 2,6 m



EDGE BRACKET SYSTEM

Slab edge bracket component offers alternative fixing to slab edges or steel soldiers.

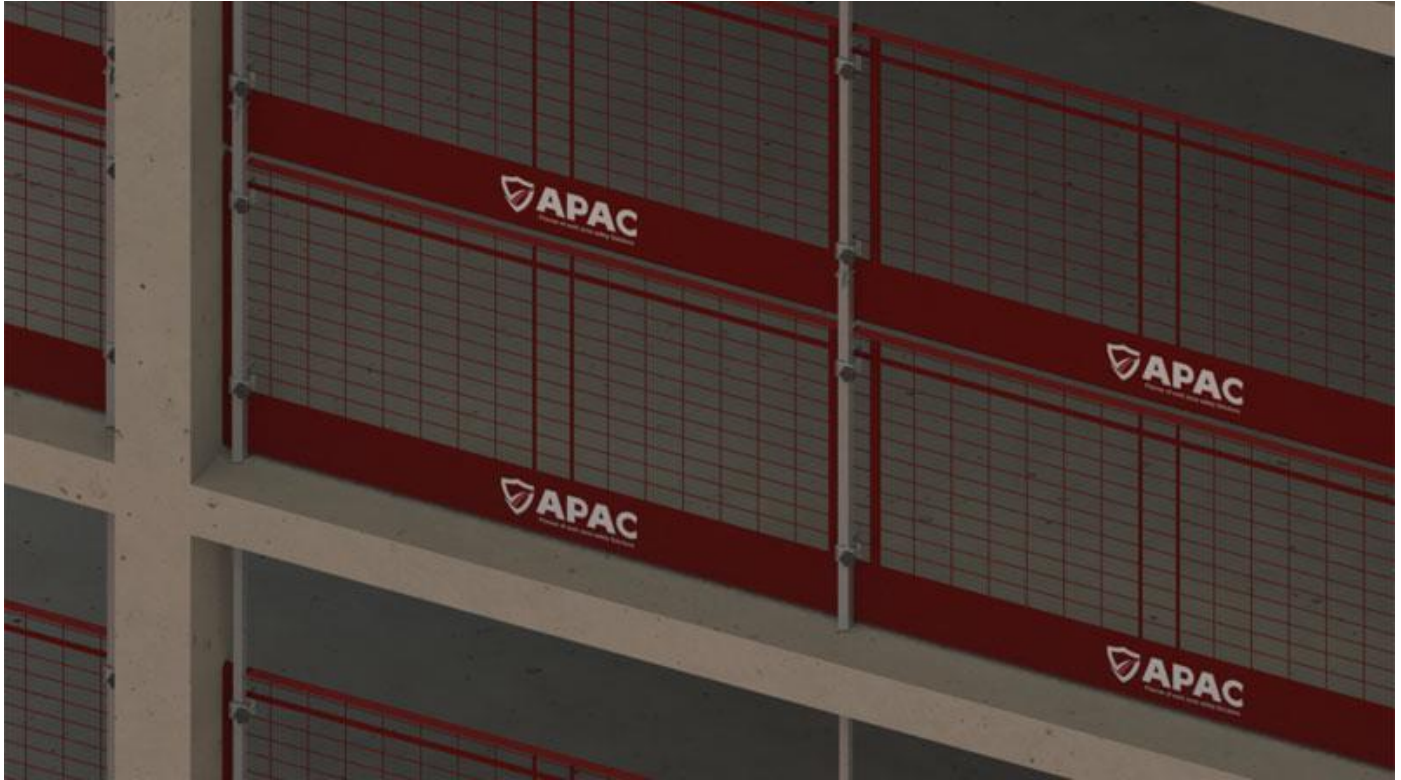
Bracket units can be used over the slab or fixed away from the slab edge for internal brickwork concourse levels.

PRODUCTS

- Slab Edge Bracket
- TG Post
- TG Barrier 1,3 , 2,6 m
- TG Barrier Clip

APAC EDGE BRACKET positions the Post 100mm off the face, providing access for edge finishing to be completed safely. Fitted using a single fixing, the Edge BRACKET remains stable by spiking the concrete when tightened.





COMPRESSION POST SYSTEM

The COMPRESSION POST fixes between concrete floors and soffits without anchors to provide safe and rapid installation of edge protection. The COMPRESSION POST can be mechanically anchored to both slab and soffit in areas of extreme wind loading such as high-rise developments.

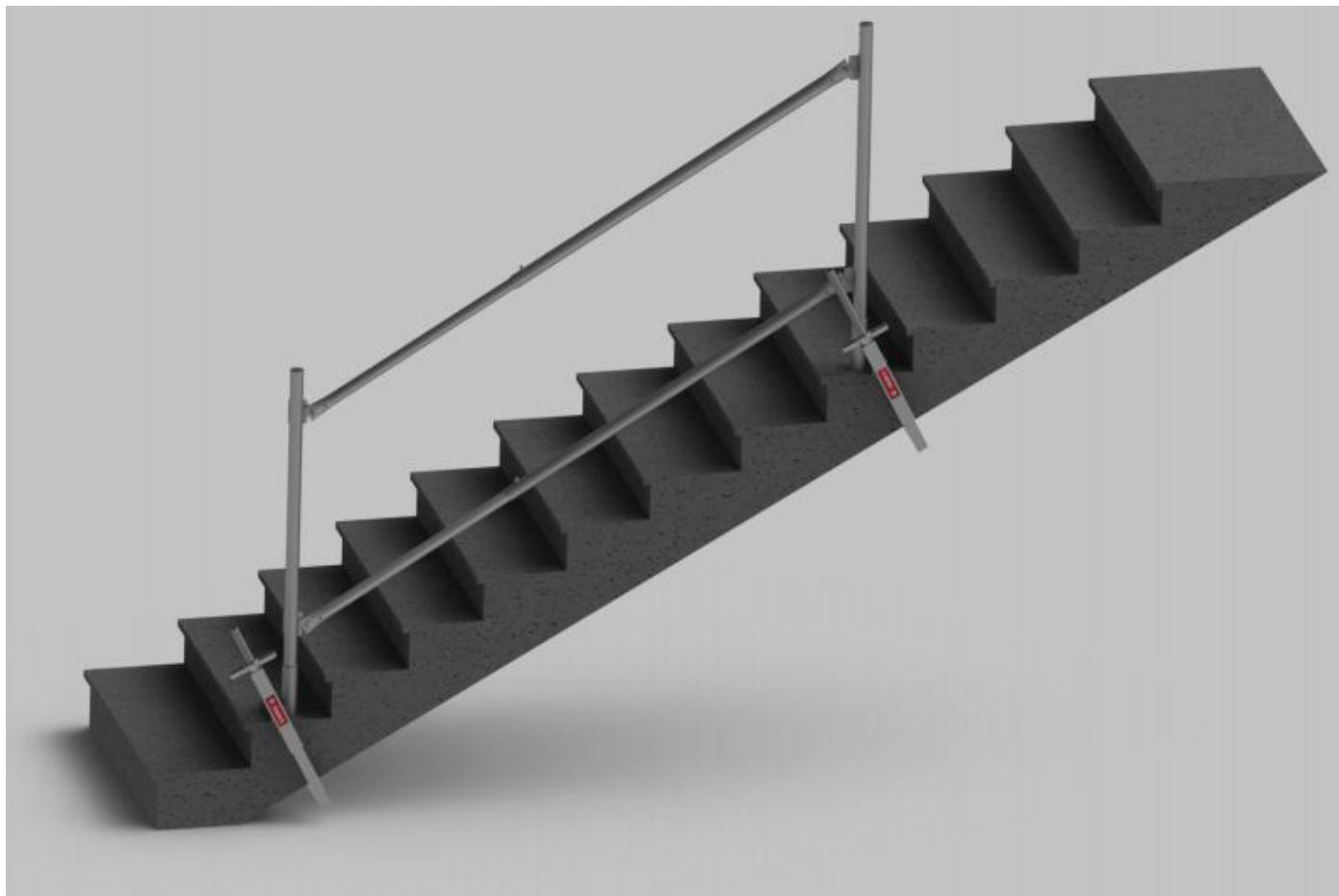


Compression Post is a safety edge protection post used on concrete residential structures installed from floor to Ceiling. Quick and easy to erect, it offers up to the 3.5m (11'6") floor to soffit full containment.

PRODUCTS

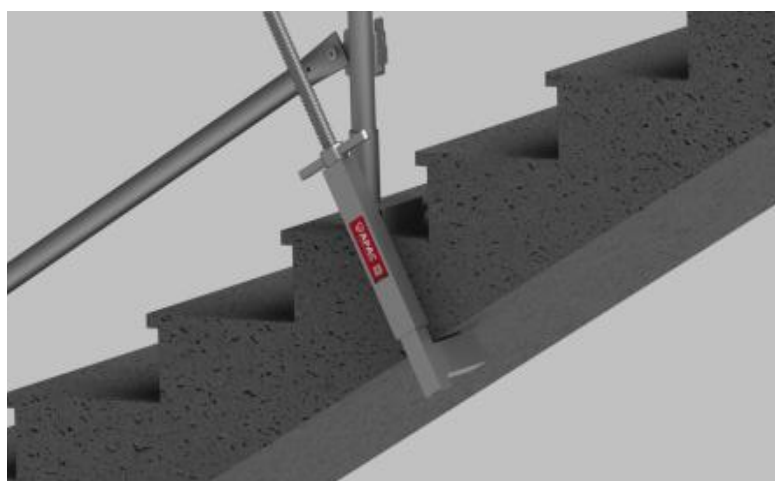
- Compression Post
- Compression Post Barrier Clip
- Mesh Barrier 1,3, 2,6 m

The COMPRESSION POST fixes between concrete floors and soffits without anchors to provide safe and rapid installation of edge protection.



STAIRWAY SYSTEM

Safe edge protection should immediately be installed in stairs that are being used, or the stairs should be blocked. As stairs are constantly used in the construction project it is important to use an edge protection system that is safe and can be handled easily.



CLAMP ON STAIRS

The new staircase solution provides a cost-effective way of constructing proprietary staircase handrails in half the time of more traditional methods.

PRODUCTS

- Stair Clamp
- Safedge Post 1,2 m
- Adjustable link bar
- Barrier bracket 360

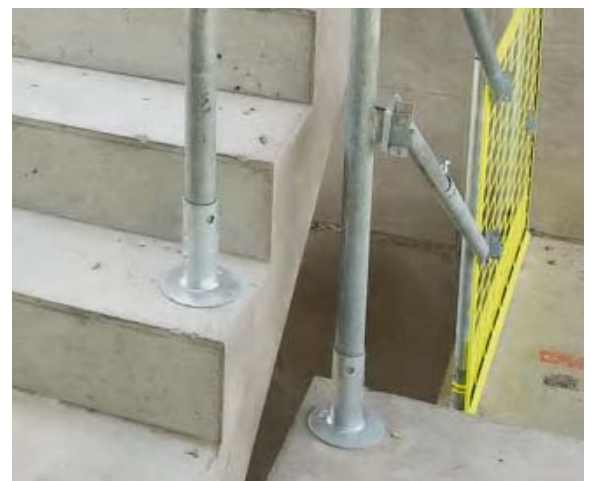


SOCKET BASE ON STAIRS

The Socket base can be used as an attachment of edge protection in stairs. The Socket base has an integrated bracket for Post 1,2 m. Adjustable link bars are installed on the posts.

PRODUCTS

- Socket Base
- Safedge Post 1,2 m
- Adjustable link bar
- Barrier bracket 360

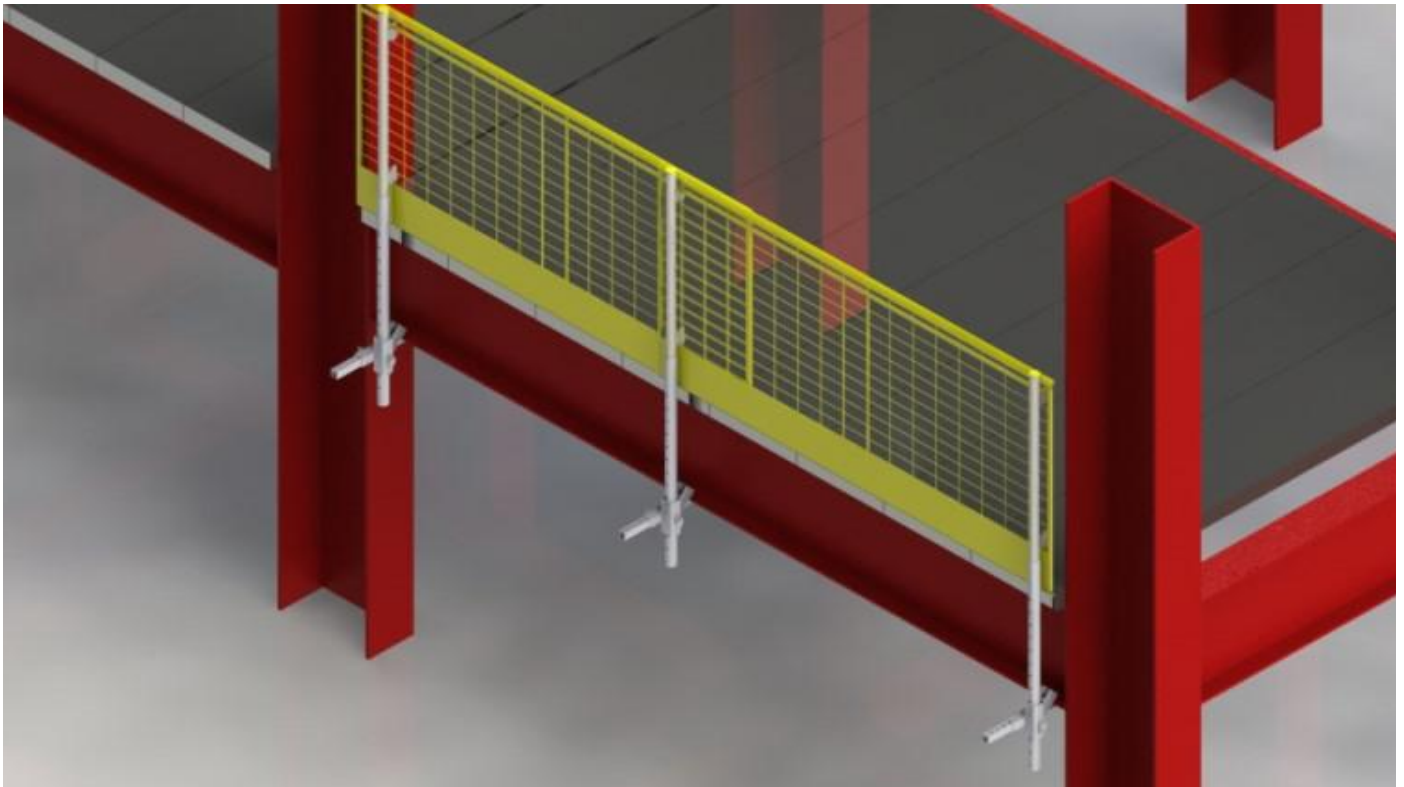


Features:

Clamping and fixing options for temporary handrails for the construction of precast and structural steelwork staircases.

Bolting, clamping, or drilling options.

The standard Staircase Post and Adjustable Link Bar system will speedily ensure temporary staircase handrails and landing bays are erected safely and securely on time.



I-BEAM BRACKET SYSTEM

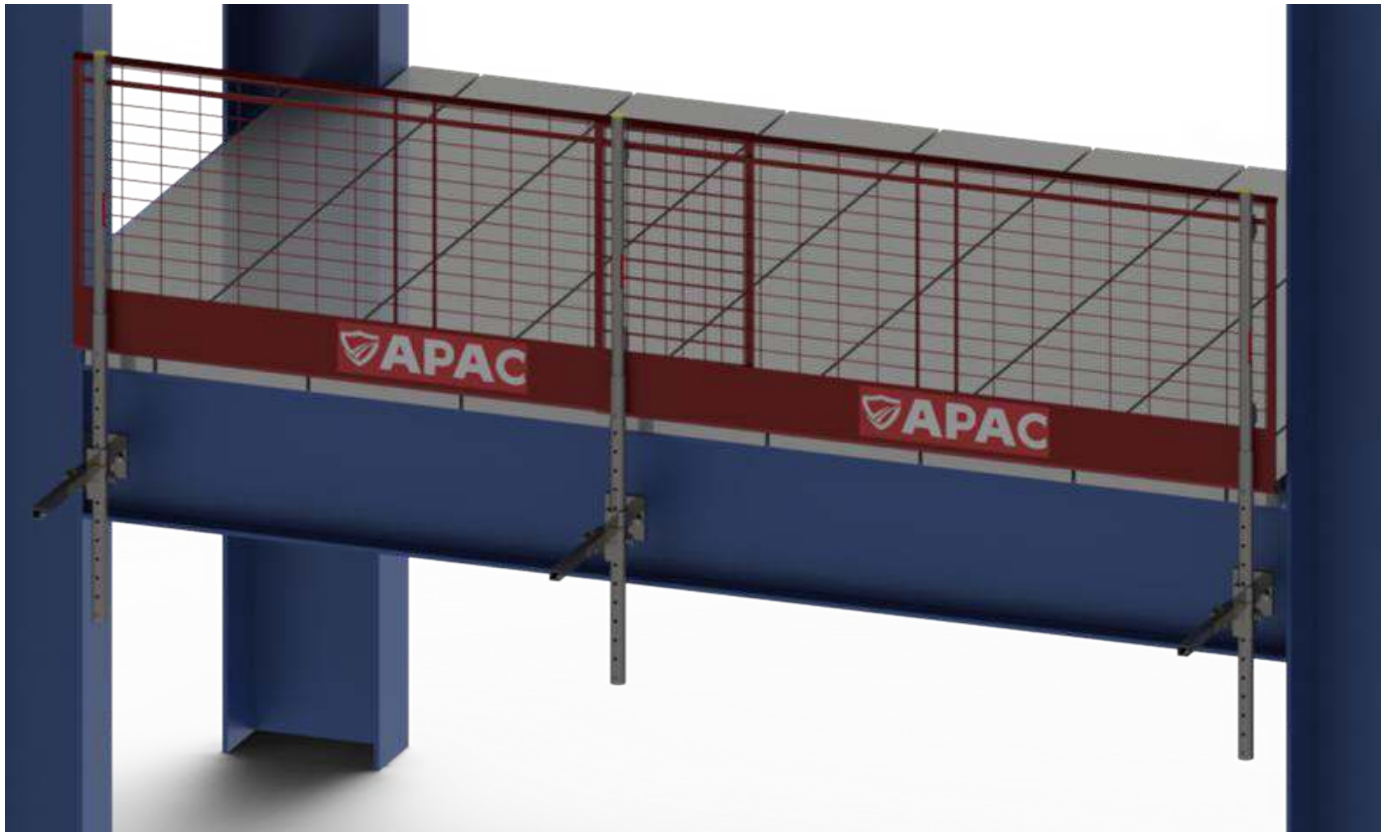
APAC has clearly engineered the most advanced edge protection safety solutions that suit all stages of structural steelwork erection.

PRODUCTS

- I-Beam Clamp
- Safedge Post 1,2 m
- Mesh Barrier 1,3, 2,6 m

Using our Beam Attachment and at the time of erection with our advanced Adjustable I-Beam Clamps.





I-Beam Facade Bracket SYSTEM

Pre-installed attachments in the framework onto a steel beam considerably facilitate the attachment of the edge protection as the attachment already is in place.

PRODUCTS

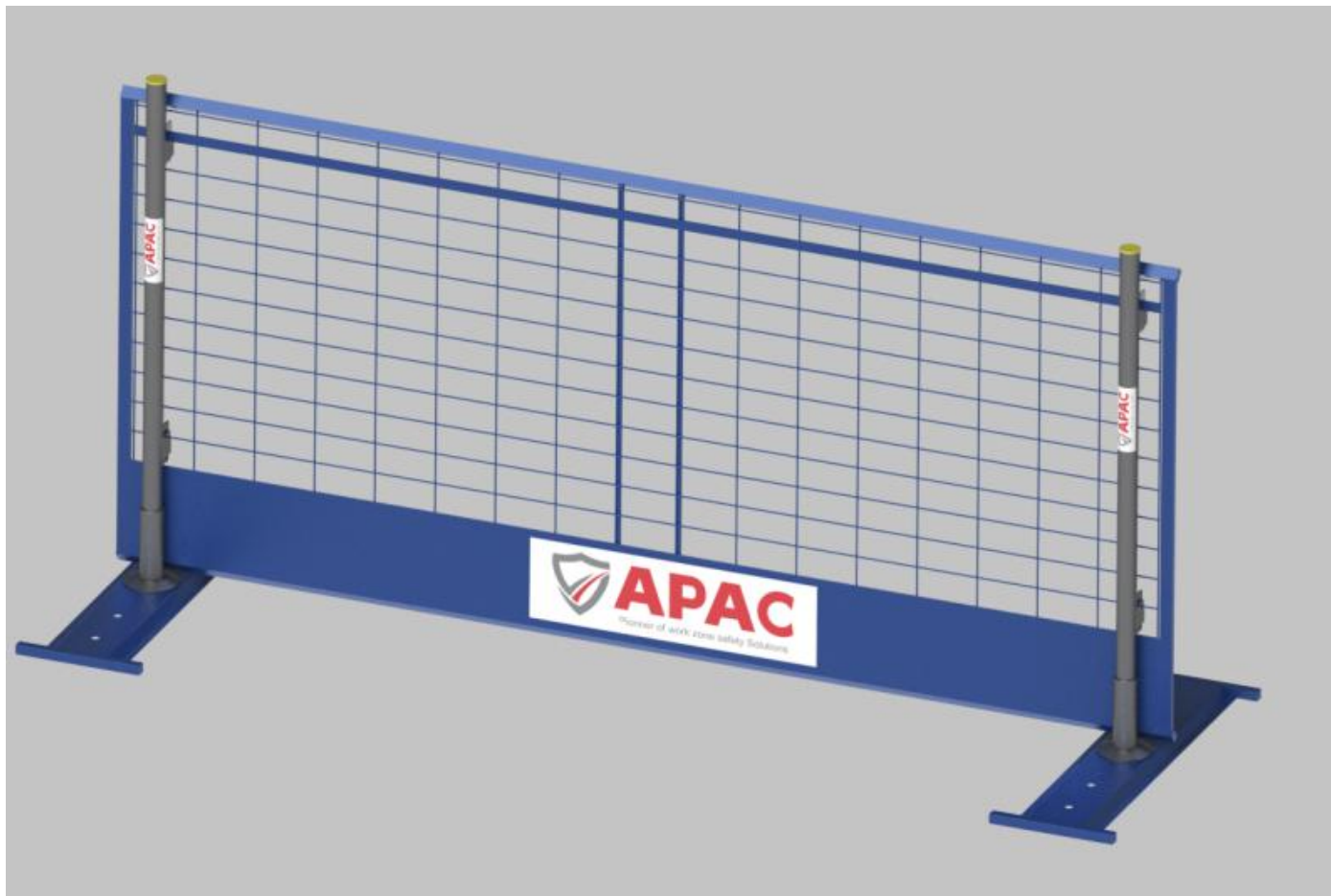
- Facade Bracket
- Sledge Post 1,2m
- Mesh Barrier 1,3 , 2,6 m



Futures:

- Positioned up to 8 feet pre-drilled center's
- Bolted directly to steel beam web

- Single bolt fixing detail
- Use of Standard Safety Post
- Variable horizontal & vertical adjustment post

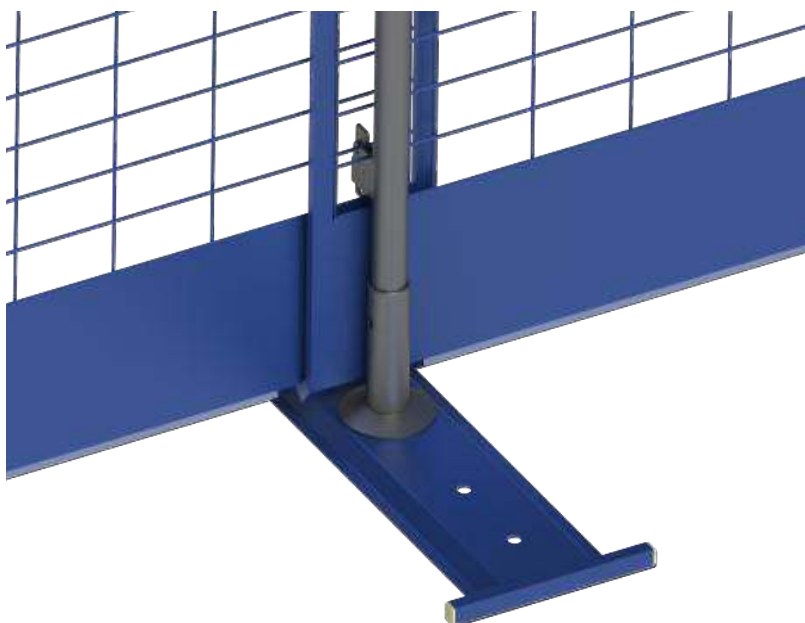


WALKWAY SYSTEM

The provision for safe site walkways and non-pedestrian zoned areas on site is a major site safety issue. APAC has tailored our commitment to this area by developing a walkway system that offers durability and strength, great flexibility, and the ability to be adapted to suit the most complex of site access areas.

PRODUCTS

- Walkway Plate
- Socket base
- Saffedge Post 1,2 m
- Mesh Barrier 1,3, 2,6 m



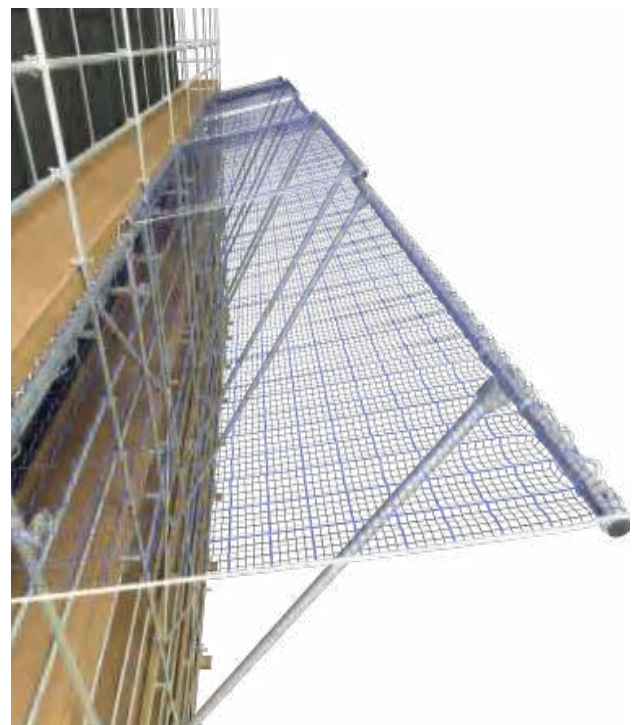


EDGE PROTECTION FOR SCAFFOLDS

APAC edge protection system is compatible with various scaffold brands. Our products and solutions can be combined with scaffolds in order to achieve safety on platform levels.

PRODUCTS

- Brick mesh guards
- Safety fan for scaffolding
- Scaffolding safety mesh





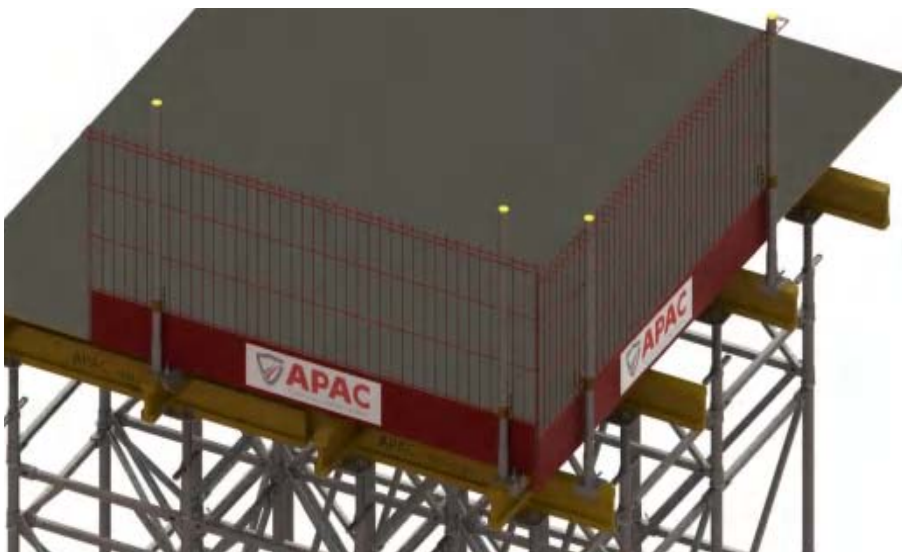
H20 BEAM CLAMP SYSTEM

H20 Beam Clamp is designed to meet the required load criteria imparted on Formwork decking system arrangements.

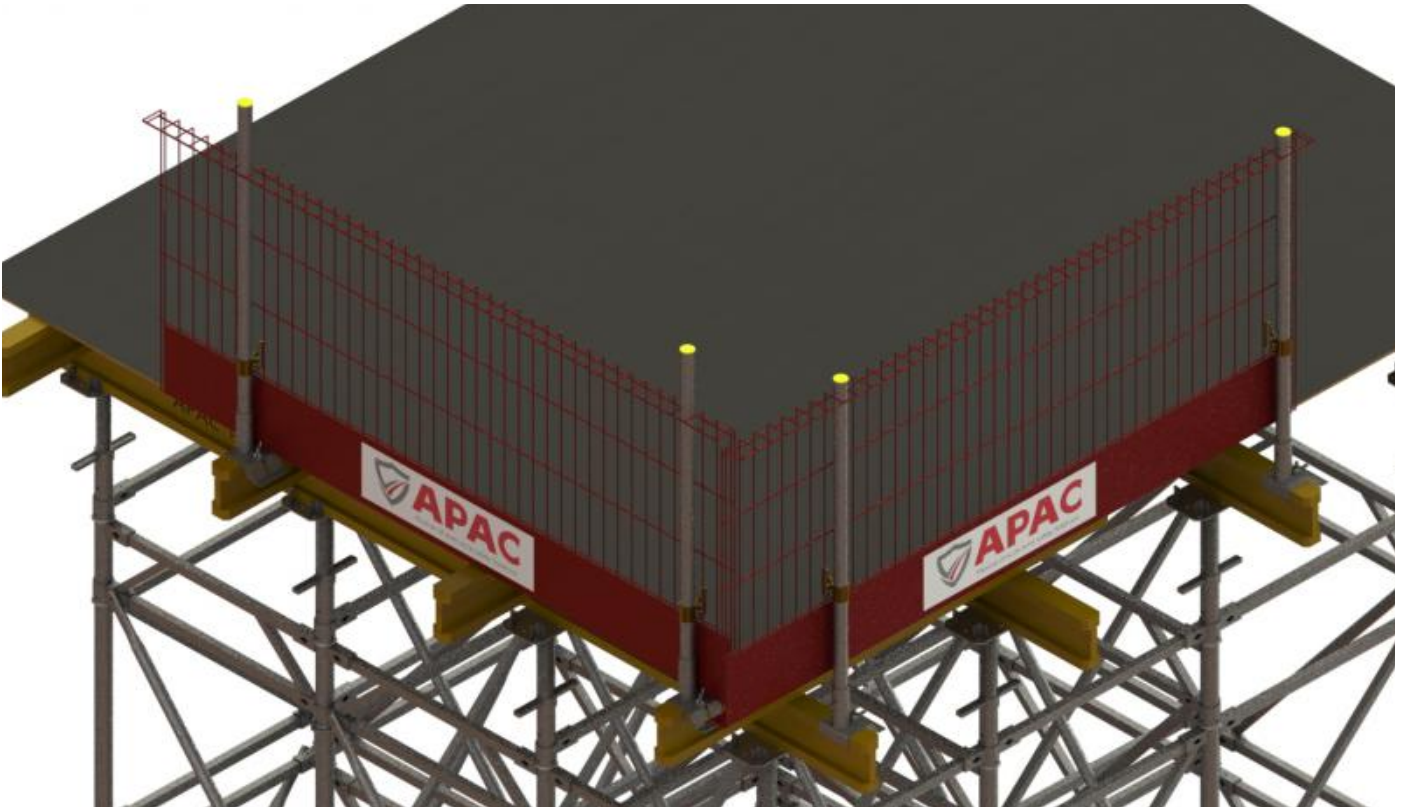
Fixing to structural timber beams, APAC has engineered the clamps to fit all sizes of timber beam sections.

PRODUCTS

- H20 Beam Clamp
- TG Post 1,3 , 1.8m
- TG Mesh Barrier 1,3 , 2,6 m



The Timber Beam Clamp is designed to connect H20 beams with the TG Post and TG Barrier. It is adjustable to fit with 40mm & 60mm H20 beams. Compatible with European proprietary timber beam sections.



ALUMINIUM BEAM CLAMP SYSTEM

APAC Safedge edge protection is designed to meet the required load criteria imparted on Formwork decking system arrangements.

The adjustable aluminium beam clamp is matching with various Formwork decking systems.

APAC has engineered the clamps to fit various sizes of aluminium beam extrusion sections.



It fits beam sizes 60mm to 150mm in width.

This attachment must be inset at least 100mm from the beam edge.

PRODUCTS

- Aluminium Beam Clamp
- TG Post 1,3 , 1.8m
- TG Mesh Barrier 1,3, 2,6 m



SAFETY NET FAN

The SAFEDGE safety net fan is a collective slab edge protection system for building construction to prevent or limit the fall of people and materials from height.

The elasticity of the system means that if the net receives an impact, it forms a collection bag around the trapped mass, reducing the impact of the fall and preventing it falling outside the system.

PRODUCTS

- Top Bracket
- Bottom Bracket
- Lock Bracket
- Telescopic Post
- Debris Net 3.1 x 6 m
- Swivel Coupler
- Double Coupler
- Horizontal Tube 4.0, 6.0m
- Brace Tube 4.50m





PEDESTRIAN BARRIER & FENCE

APAC pedestrian barrier and temporary fence system are a stable and fast-mounted system for blocking and temporary enclosures, designed to meet demanding environments.

The system consists of a pedestrian Barrier and temporary Fence in different lengths with several types of ground support.

PRODUCTS

- Pedestrian Barrier 1,8 m, 2,5 m, 3,2 m
- Temporary Fence 1,8 m, 2,5 m, 3,2 m
- Flat Foot
- Angled Support Brace

They can easily be connected by integrated hooks and loops and set at different angles.

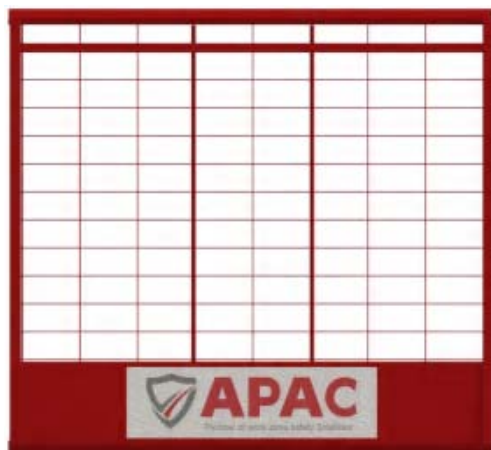
The system can be used as temporary blocking in traffic environments, on construction sites, and at events, etc. The system is designed for ergonomic and cost-effective handling. It can also be equipped with reflexes for increased visibility.



▲ MESH BARRIER**Safedge Mesh Barrier 2.6m**

Art. No. APAC101003

- | Weight: 21 kg
- | Galvanised mesh and frame, powder-coated for durability
- | Conforms to EN 13374, class A; COHS; OSHA; ANSI/ASSE
- | 1.2m high and 2.6m long,
- | 4mm mesh thickness, grid 150mm x 75mm pitch centers
- | 10mm central stiffening bars
- | Integrated 225mm toe board housed and welded within external frame

**Safedge Mesh Barrier 1.3m**

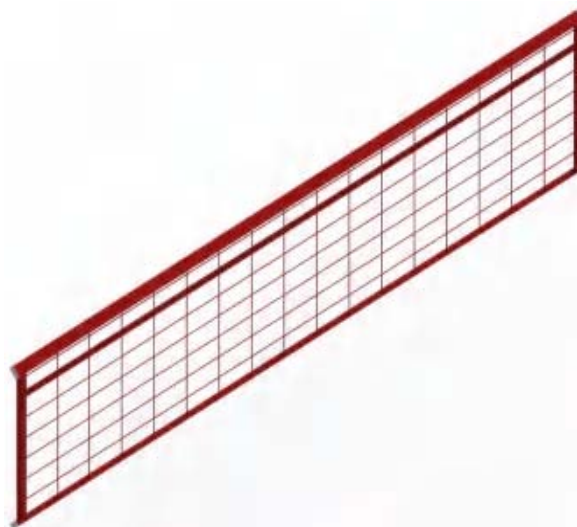
Art No. APAC101004

- | Weight: 12 kg
- | Galvanised mesh and frame, powder-coated for durability
- | Conforms to EN 13374, class A; COHS; OSHA; ANSI/ASSE
- | Barrier size : 1.2m high and 1.3m long,
- | 4mm mesh thickness, grid 150mm x 75mm pitch centers
- | 10mm central stiffening bars
- | Integrated 225mm toe board housed and welded within external frame

2.6m Extension Mesh Barrier

Art. No. APAC101006

- | Weight: 12.5 kg
- | Barrier size: 0.6m high and 2.6m long,
- | 4mm mesh thickness, grid 150mm x 75mm pitch centers
- | Galvanised mesh and frame, powder-coated for durability
- | 600mm high extension barrier enabling a total height of 1.80m to be achieved



△ MESH BARRIER



1.3m Extension Mesh Barrier

Art. No. APAC101007

- | Weight: 7 kg
- | Barrier size: 0.6m high and 1.3m long,
- | 4mm mesh thickness, grid 150mm x 75mm pitch centers
- | Galvanised mesh and frame, powder-coated for durability
- | 600mm high extension barrier enabling a total height of 1.80m to be achieved

TG Mesh Barrier 2.6m

Art. No. APAC101023

- | Weight: 20 kg
- | Galvanised mesh , powder coated for durability
- | Conforms to EN 13374, class A; COHS; OSHA; ANSI/ASSE
- | 1.2m high and 2.6m long,
- | 5mm vertical wire, 6mm horizontal wire
- | Integrated 200mm toe board housed and welded within external frame



TG Mesh Barrier 1.3m

Art No. APAC101024

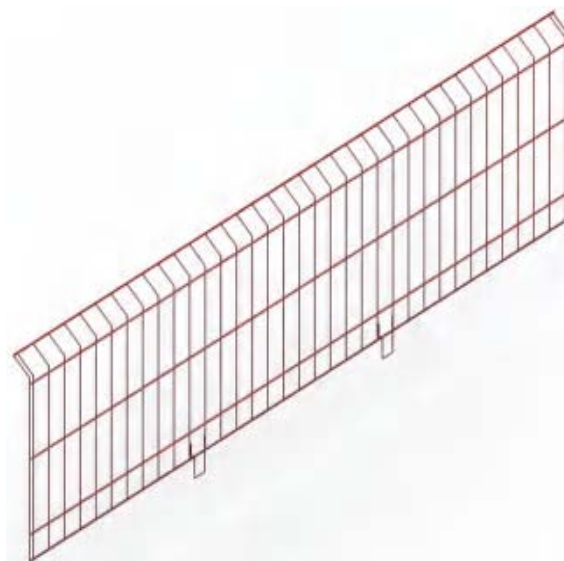
- | Weight: 9 kg
- | Galvanised mesh, powder-coated for durability
- | Conforms to EN 13374, class A; COHS; OSHA; ANSI/ASSE
- | 1.2m high and 1.3m long,
- | 5mm vertical wire, 6mm horizontal wire
- | Integrated 200mm toe board housed and welded within external frame



▲ MESH BARRIER**Make Up Mesh Barrier 2.6m**

Art. No. APAC101025

- | Weight: 10 kg
- | Galvanised mesh, powder-coated for durability
- | Conforms to EN 13374, class A; COHS; OSHA; ANSI/ASSE
- | 0.7m high and 2.6m long,
- | 5mm vertical wire, 6mm horizontal wire
- | Adapted to TG mesh barrier 2.6m

**Make Up Mesh Barrier 1.3m**

Art. No. APAC101026

- | Weight: 5kg
- | Galvanised mesh, powder-coated for durability
- | Conforms to EN 13374, class A; COHS; OSHA; ANSI/ASSE
- | 0.7m high and 1.6m long,
- | 5mm vertical wire, 6mm horizontal wire
- | Adapted to TG mesh barrier 1.3m

2.9m Long Distance Mesh Barrier

Art. No. APAC101033

- | Weight: 20 kg
- | Galvanised mesh and frame, powder-coated for durability
- | Conforms to EN 13374, class A; COHS; OSHA; ANSI/ASSE
- | Barrier size: 1.1 high and 2.9m long
- | 4mm wire thickness
- | Integrated 200mm toe board housed and welded within external frame





Socket Base

Art. No. APAC101001

Used for flat-leveled surface applications,
most frequently at the slab edge to provide a post socket.

- | Weight 1.5kg
- | Hot-dip galvanized Surface
- | Conforms to EN13374, Class A; COHS; OSHA; ANSI/ASSE

Impact Anchor and M16 Bolt

Impact Anchor Art No. APAC101019
M16 Bolt Art No. APAC101020

Adapted to socket base to provide a connection
to the slab structures
Double Threaded M16
Anchore depth 75mm






TG Foot

Art No. APAC101010

Used for flat-leveled surface applications,
most frequently at the slab edge to provide a post socket.

- | Weight 2kg
- | Hot-dip galvanized Surface
- | Conforms to EN13374, Class A; COHS; OSHA; ANSI/ASSE

<div><div>ΔFOOT</div><div><div><div>Multi Foot</div><div>Art. No. APAC101021</div><div>.....</div><div>Used for flat-leveled surface applications, most frequently at the slab edge to provide a post socket.</div><div><div> Weight: 2.0kg</div><div> Powder Coated or Hot-dip galvanized Surface</div><div> Conforms to EN 13374, class A; COHS; OSHA; ANSI/ASSE</div></div></div><div></div></div></div>	
<div><div></div></div>	<div><div><div>Walkway Footplate</div><div>Art. No. APAC101031</div><div>.....</div><div>Used for site safe walkways and demarcation areas, allows the barrier to be located in 1 of 3 pre-drilled positions.</div><div><div> Weight: 11.5kg</div><div> Powder Coated Surface</div><div> Conforms to EN 13374, class A; COHS; OSHA; ANSI/ASSE</div></div></div></div>
<div><div><div>Concrete Screw</div><div><div>Art. No. APAC101027</div><div>Art. No. APAC101028</div><div>Art. No. APAC101029</div><div>Art. No. APAC101030</div></div><div><div>Concrete Screw 10×75</div><div>Concrete Screw 10×90</div><div>Concrete Screw 10×100</div><div>Concrete Screw 10×120</div></div><div>.....</div><div>Used for TG Foot or multi Foot ,this model screw anchor with a finished hex head. It is simple to install, easy to identify and fully removable. The anchor is designed for consistent and reliable performance in cracked and uncracked concrete.</div><div><div> Zinc-Plated</div><div> Conforms to EN 13374, class A; COHS; OSHA; ANSI/ASSE</div></div></div></div>	<div><div></div></div>



Safedge Post 1.2m

Art No. APAC101002

Used for APAC mesh barrier & socket base, this model post offers a 1.2m height and can be positioned up to 2.4m centers for safedge mesh barriers.

- | Diameter: 48mm
- | Height: 1.2m
- | Weight: 5.0kg
- | Conforms to EN 13374, class A; COHS; OSHA; ANSI/ASSE

Safedge Extension Post

Art No. APAC101005

This product used with a safety post providing access height to be 1.8m. This product is an excellent solution for erecting barrier systems on concrete slab edges for higher requirements.



- | Weight :3.5kg
- | Hot-dip galvanized
- | Conforms to EN 13374, class A; COHS; OSHA; ANSI/ASSE



TG Post 1.3m/1.8m

Art No. APAC101012 & APAC101013

The spring clip system makes assembly simple and safe by locking the TG Post into the different compatible components.

- | Weight: 4 kg / 6 kg
- | Diameter: 48mm
- | Conforms to EN 13374, class A; COHS; OSHA; ANSI/ASSE

△ COMPRESSION POST**Compression Post**

Art. No. APAC102011

Compression Post is a safety edge protection post used on concrete residential structures installed from floor to Ceiling.

- | No tools are required.
- | Fast, strong, and easy to work with.
- | Designed to support double-height barrier load requirements.
- | Slab to soffit compression for heights between 2.4m (8') to 3.5 meters (11'6")
- | Complies to EN 13374-A
- | Hot Dipped Galvanized or Powder-coated Surface



Slide the adjustment handle down or up to lock and unlock the post



The top device has a spring system
The bottom has the 25mm (1") adjust distance fully threaded screw

After the post be set up on the floor,
rotate the compression post counter
clockwise to lock it safely.



▲ ATTACHMENT**Multi Slab Clamp**

Art No. APAC101008

Multi Slab Grab Accommodates: From 30mm–450 mm.
 Several installation alternatives.
 Swiveling 360 degrees and reversible.
 Handles all stair angles.

- | Weight: 9 kg
- | Zinc Plated Surface

Slab Grab

Art No. APAC101009

Accommodates: from 3" to 26" (76 mm – 660 mm)
 Integrated slots for using 2" x 4" wood rails or mesh barrier

- | Weight: 14 kg
- | Hot-dip galvanized
- | Conforms to EN 13374, class A; COHS; OSHA; ANSI/ASSE

**Slab Edge Bracket**

Art No. APAC101011

Console brackets are used on slab edges to create a free working space, several installation alternatives.

- | Weight: 2.5 kg
- | Hot-Dipped Galvanized
- | Conforms to EN 13374, class A; COHS; OSHA; ANSI/ASSE

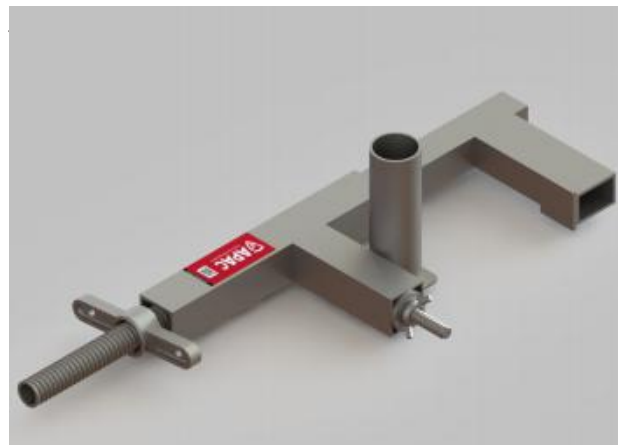


▲ ATTACHMENT**Stair Clamp**

Art. No. APAC101018

Stair System using a unique stair clamp, adjustable link bar and stair post can form a stair guard system in minutes. The new staircase solution provides a cost effective way of constructing proprietary staircase handrails in half the time of more traditional methods.

- | Weight: 9kg
- | Zinc Plated Surface
- | Conforms to EN 13374, class A; COHS; OSHA; ANSI/ASSE

**Steel I-Beam Clamp**

Art. No. APAC103001

Single fixing and able to be fitted to any hot rolled beam or column with horizontal clearance to cope with virtually all slab overhangs on undrilled fabricated steelwork.

- | Weight: 9kg
- | Hot-dipped Galvanized
- | Conforms to EN 13374, class A; COHS; OSHA; ANSI/ASSE

Facade I Beam Clamp

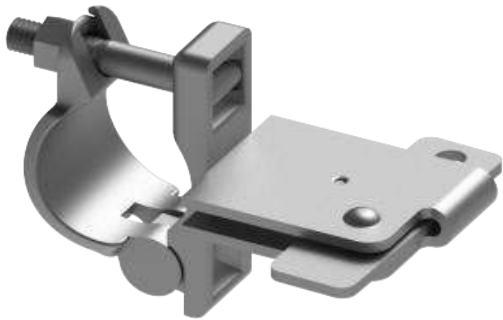
Art. No. APAC103002

Pre-installed attachments in the framework onto steel beam considerably facilitate the attachment of the edge protection as the attachment already is in place.

- | Weight: 90g
- | Hot-dipped Galvanized
- | Conforms to EN 13374, class A; COHS; OSHA; ANSI/ASSE



ATTACHMENT



Wedge Coupler

Art. No. APAC102050

Used on posts or scaffold pipes (48,3 mm) for attachment of Barriers or Adjustable link bars.

- | Weight: 1.0kg
- | Hot-dipped galvanised
- | Conforms to EN 13374, class A; COHS; OSHA; ANSI/ASSE

Aluminium Beam Clamp

Art. No. APAC106001

Compatible with all beam width sizes. Speedy Wing Nut locking device. Improved safety for high wind loadings.

- | Weight: 2.5kg
- | Hot-dipped galvanised
- | Conforms to EN 13374, class A; COHS; OSHA; ANSI/ASSE



H20 Timber Beam Clamp

Art. No. APAC106002

Compatible with European proprietary timber beam sections. Speedy Wing Nut locking device. Unique profiled wedge section locking clamp

- | Weight: 4.0kg
- | Hot-dipped Galvanized
- | Conforms to EN 13374, class A; COHS; OSHA; ANSI/ASSE

▲ ATTACHMENT**TG Barrier Clip**

Art. No. APAC105003

The TG Slider can be adjusted to any position on the Post.

A strong but light attachment, this product offers a smart solution for barrier height adjustment when used in combination with the barrier, keeping it securely positioned at all times.

- | Weight: 0.5kg
- | Zinc Plated /Powder-coated Surface
- | Conforms to EN 13374, class A; COHS; OSHA; ANSI/ASSE

**Compression Post Barrier Clip**

Art. No. APAC102060



The slider hook can be adjusted to any position on the Post.

with strong but light attachment, this product offers a smart solution for barrier height adjustment when used in combination with the barrier, keeping it securely positioned at all times.

- | Weight: 1 kg
- | Zinc Plated Surface
- | Conforms to EN 13374, class A; COHS; OSHA; ANSI/ASSE

Barrier Bracket 360

Art. No. APAC103004

Barrier bracket 360 is used in corners to eliminate double attachments or posts.

Makes possible Barriers despite radius.

Dimensions approx. 113 x 85 mm.

- | Weight: 0.5g
- | Zinc Plated Surface
- | Conforms to EN 13374, class A; COHS; OSHA; ANSI/ASSE



SAFETY NET FAN

Safety Net Fan Assembly

Art. No. APAC108000

The SAFEDGE Safety Net Fan is a collective slab edge protection system for building construction to prevent or limit the fall of people and materials from the height.



Top Bracket

Art. No. APAC108001

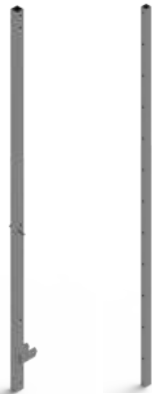
Used for attaching Safety fans on floor structures.



Telescopic Post

Art. No. APAC108002

Used for adjusting the height of the floor structures.



Lock Brace

Art. No. APAC108003

Used for locking the safety net fan on position.



Bottom Bracket

Art. No. APAC108004

Used for attaching Safety fans on floor structures.



Horizontal Tube 4m/6m

Art. No. APAC108005
Horizontal Tube 4.0m

Art. No. APAC108006
Horizontal Tube 6.0m

Used for attaching Debris Net
Diameter: 48mm
Thickness: 3.2mm



Brace Tube 4.5m

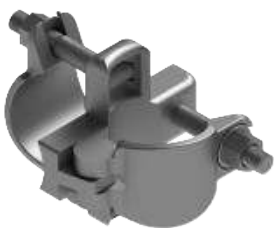
Art. No. APAC108007

Used for extending Debris Net
Diameter: 48mm
Thickness: 3.2mm



Right Angle Coupler

Art. No. APAC108008



Swivel Coupler

Art. No. APAC108009

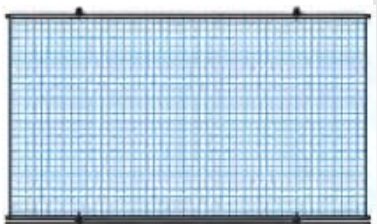


Debris Net

Art. No. APAC108010
4.0m x 3.1m Debris Net

Art. No. APAC108011
6.0m x 3.1m Debris Net

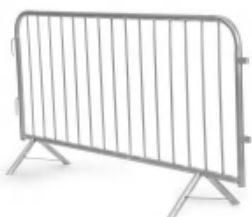
Prevent or limit the fall of people and materials from height.



OTHER PRODUCTS**Pedestrian Barrier**

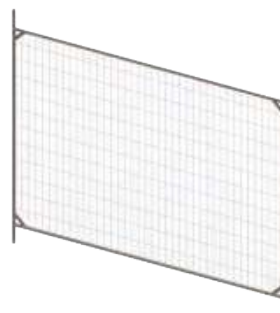
1.8 m Art. No. APAC330001
2.5 m Art. No. APAC330002

For demanding environments.
Can be equipped with reflex.
Easily coupled through
integrated hooks and loops.

**Temporary Fence**

1.8 m Art. No. APAC310001
2.5 m Art. No. APAC310002

Custom profiling possible.
For demanding environments.
Can be placed at several angles.

**Fence Clip**

Art. No. APAC310030

Clip provides a positive
connection between fence panels.

**Foot with Concrete**

Art. No. APAC310010

Post holes can run across or
go up and down the blocks.
Designed to be filled with concrete.

**Flat Foot**

Art. No. APAC320030

Ground support for temporary
fence system.

**Brick Mesh Guard**

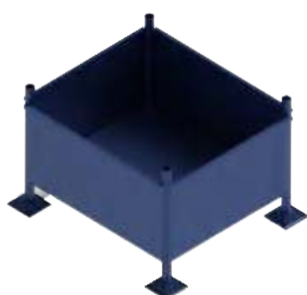
Art. No. APAC101022

Combined with scaffolds in order
to achieve safety on platform levels.

**Box Stillage**

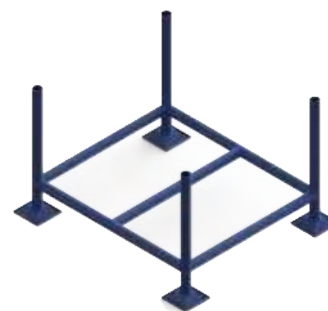
Art. No. APAC101017

Adapted to foot/socket base

**Post Stillage**

Art. No. APAC101016

Adapted to post 1.2m

**Barrier Stillage Vertical**

Art. No. APAC101014

Adapted to Barriers 2.6m

**Barrier Stillage**

Art. No. APAC101015

Adapted to Barriers 2.6m





“APAC” is the leader supplier of edge protection
Your construction sites safety Expert and Partner

Add: 388 Dongwu South Rd. , Suzhou City, R.P. China
Tel: +86 512-6670 0084 Fax: +86 512-6670 0084
W: www.apacsafety.com E: sales@apacsafety.com