

Catalogue

2021

APAC BUILDERS EQUIPMENT CO.,LTD

Ringlock Scaffold System Brochure

**VERSION
2.0**



Ringlock is a modular access scaffolding system for industrial and construction applications. Ringlock is built with fewer main components which lead to a significant reduction of commissioning quantities. Regardless of the requirements, up to 80% of the material is reusable for different applications.

This will reduce investment costs and increase utilization rates while benefiting from an assembly sequence that follows the same principle for all applications. A high return on investment is also underlined by the hot-dipped galvanization on structural components.

our Ring System Scaffold, it has been widely used in many civil engineering projects, such as High Speed rail, Freeway, elevated railway, subway, high-tech factories, and music concert, and event application etc.

Moreover, We have exported our system to Thailand, Singapore, Philippines, Malaysia, Dubai, Israel, South Africa, Spain, Viet Nam, Indonesia, Russia, and Colombia. We successfully make use of our experience and the techniques into their local civil engineering projects.

With our technical knowledge and full-service solution, we are able to serve customers with confidence and enthusiasm.

Pieter Zhang
Managing Director
APAC Builders Equipment



CONTENTS

1. CONTENTS	P01-02
2. ABOUT US	P03-04
3. REINFORCED REBARD SCAFFOLD	P05
4. STAIRWAY TOWER	P06
5. MOBILE SCAFFOLDING	P07
6. HANGING SCAFFOLDING	P08
7. CIRCULAR SCAFFOLDING	P09
8. BIRDCAGES SCAFFOLDING	P10
9. SHORING	P11
10.FACADES SCAFFOLDING	P12
11.OVERVIEW	P13-16
12.COMPONENTS OVERVIEW	P17-26

ABOUT APAC

APAC Builders Equipment Co.,Ltd specializes in supplying of system scaffolding & falseworks. The company has always strived to set and maintain the very highest of standard in safety and the supply of the highest quality formwork and scaffolding components.

Our key products: Ringlock scaffolding system, Cuplock scaffolding system, Aluminum scaffolding system, Shoring props and Formwork Products. Focus on the technical development and to meet the needs of our customers we adopt a lot of new technology and inspirational ideas to our products.

Our scaffoldings which are widely used in residential, shipbuilding, mining, insulation, oil & petroleum, airports, bridges etc.





EXPERIENCE

Between most of our team members we have decades of experience in the industry.

Many sales are mechanical background, can better understand the customer's project needs, in our view, this is very important in international trade, is conducive to less customer communication costs.

Our mission is to work closely with our client, architect or designer to get a clear understanding of their needs and intended outcome. In dealing with us, you have the benefit of dealing with an experienced, professional, and motivated team who's committed to attention to detail, working to a budget, a timeline and qualified products.



PRODUCTIVITY

APAC Builders Equipment is a professional construction material supplier, producing various equipment for construction industry, such as Aluminium scaffolding, ringlock scaffolding, cuplock scaffolding, shoring prop, and related accessories.

We operate professional production workshops and equipment, including punching machines, welding machines, pipe cutting machines, shearing machines, bending machines, screw machines etc. After years of hard work, we can produce up to 30,000 tons of equipments annually and our products are sold in many countries.



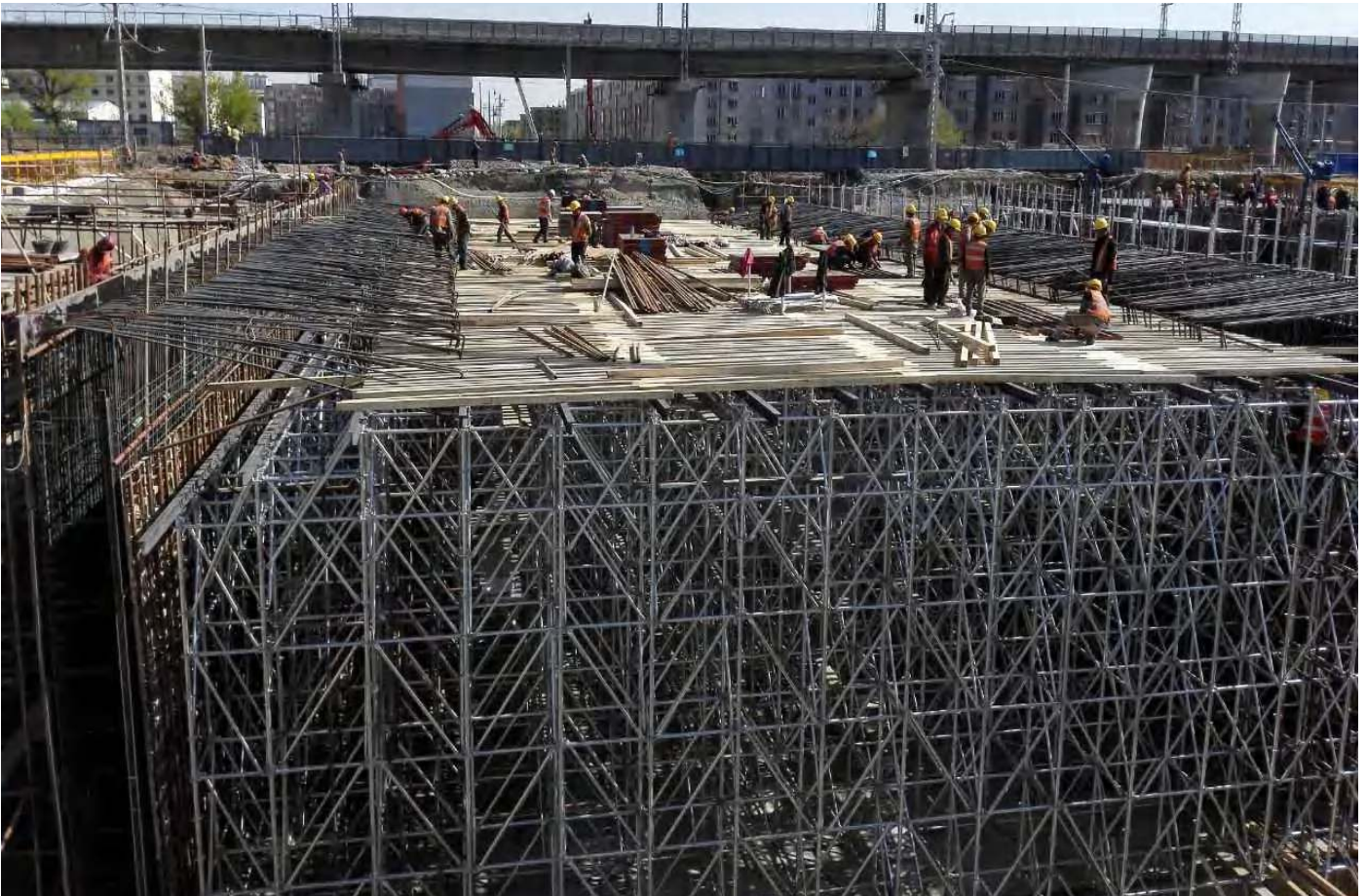
QUALITY ASSURANCE

We have established a quality assurance department to make sure that our products meet customer requirements. Based on the ISO9001 Quality Management System, our professional team strictly examines every procedure, from supplier verification to examination of raw materials, production and finished products, so as to ensure the high quality of products.

We fully understand the scaffolding standard such as EN12811, EN12810, AS/NZS1576.2, ANSI/SSFI SC100-5/05, NCH2501, GOST 27321-2018 and GOST 24258-88 for different countries.

Additionally, we also do the in-house loading capacity testing for batch orders before shipment according to our client local requirement.





Reinforced Rebar Scaffolding

This modular scaffolding allows works of rebar, as tower ladder and mobile scaffolding. Module is adjustable vertically, thanks to a height of 50 cm grid. Also fits on the ground thanks to a modular knots, each with eight-way connection on a level.

Modul makes possible the combination with other manufacturers scaffolding and reaching different heights of scaffolding, lengths and widths of openings.

Orderly Assembly

Perfect fit with a swoop of hammer.

Short time of learning

Using quick cycle to another, by displacement with crane.

Ensures safety

Main components

- Base Jack
- Base Collar
- Standard
- Ledger
- Diagonal Brace
- Steel Plank



Stairway Tower

Stair towers allow workers to access high spaces and prevent harmful accidents. Our safe stair tower system includes fast & easy setup, maximum flexibility, and high load capacity.

With stair towers, fewer materials and tool need to be brought up by the forklift, so your crews can man and supply the scaffolding platform faster and get to work faster with less downtime.

Stair towers are much safer! Stairs offer fall protection in the form of side rails all the way up. Stairs provide faster access to the scaffolding platform because multiple workers can use them simultaneously and even in different directions. workers can carry tools and equipment with them up the stairs, which is safer than carrying them up a ladder.

Main components

- Base Jack
- Base Collar
- Standard
- Ledger
- Diagonal Brace
- Stair
- Steel Plank



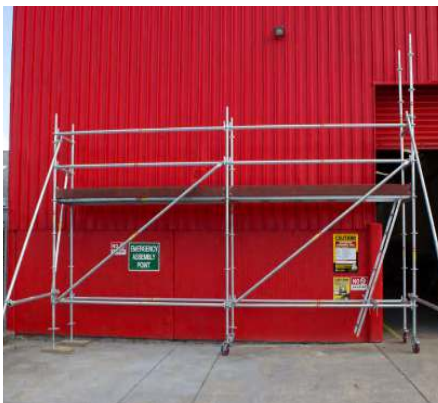
Mobile Scaffolding

MOBILE scaffolding is designed in accordance with European standards with 100% safety rules. In the ground, braked wheels with a carrying capacity of 600 or 900 KG tested according to EN 1004 standards are used for safety and comfort.

The system is designed to be maximum H = 12 mt indoors and maximum H = 8 mt outdoors according to your working height.

Main components

- Castor Wheel
- Standard
- Ledger
- Diagonal Brace
- Staircase/Ladder
- Steel Plank
- Toe Board





Hanging Scaffolding

Hanging scaffolding is very useful in rapid maintenance operations in which it is easier to install the support of the working scaffolding on the terrace of the building rather than placing a scaffolding starting from the countryside level.



The Hanging scaffolding is characterized by the ease of assembly and disassembly based on the type of work to be performed: ordinary and extraordinary maintenance of buildings of considerable height, bridges, works of art and any other surface that does not allow.

Main components

- Standard
- Ledger
- Brace
- Steel Plank



Circular Scaffolding

Circular scaffolding is often used on various tanks, gas holders, reactors, columns, and other industrial facilities of the cylindrical or spherical shape. Another distinctive feature of circular scaffolding is frequent use of steel battens on intermediate (trapezoidal) spans.



The scaffold can be erected along the perimeter of the tank or inside it, to carry out a maintenance work as per your requirements. The scaffolding includes for the fuel / oil tanks, water tanks , Chimney .

Main components

- Base Collar
- Base Jack
- Standard
- Ledger
- Diagonal Brace
- Steel Plank
- infill Plank

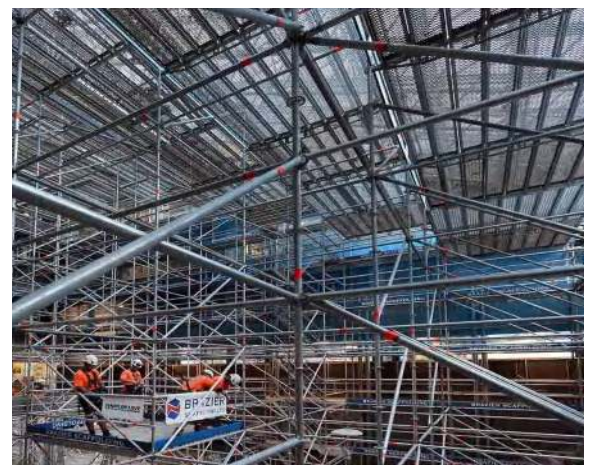


Birdcages Scaffolding

Birdcages consist of scaffolding bays joined together to provide large areas of continuous access. They are typically used in large buildings where access to the ceiling is required, needing continuous access at high levels

Main components

- Base Jack
- Base Collar
- Standard
- Ledger
- Diagonal Brace
- Steel Plank



All birdcage scaffolds need to be braced or tied to make sure that they're stable enough, standards need to be braced to ensure it's strong enough to carry vertical loading. Birdcages should also be stiff enough to resist lateral sway and horizontal loads as well as being safe from overturning. External birdcages should also be braced in order to resist wind forces as well as being anchored when necessary.



Shoring

Ringlock shoring system is widely used for pouring slab concrete, especially for the building which has higher story height that only using props can't meet requirements. The system guarantees quick assembly, simple structure and easily operation, it is good choice for slab construction.

Main components

- Base Jack
- U Head Jack
- Standard
- Ledger
- Diagonal Brace





Facade Scaffolding

Facade Scaffolds are temporary constructions. They serve to create higher-positioned working areas for construction site activities, on buildings as well as on industrial facilities.

Main componets

- Base Jack
- Base Collar
- Standard
- Ledger
- Diagonal Brace
- Steel Plank



Facade scaffolding systems ensure that all works on the interior, exterior and ceilings of the buildings are carried out safely and quickly. Systems that can be erected in different sizes according to the size of the structures.

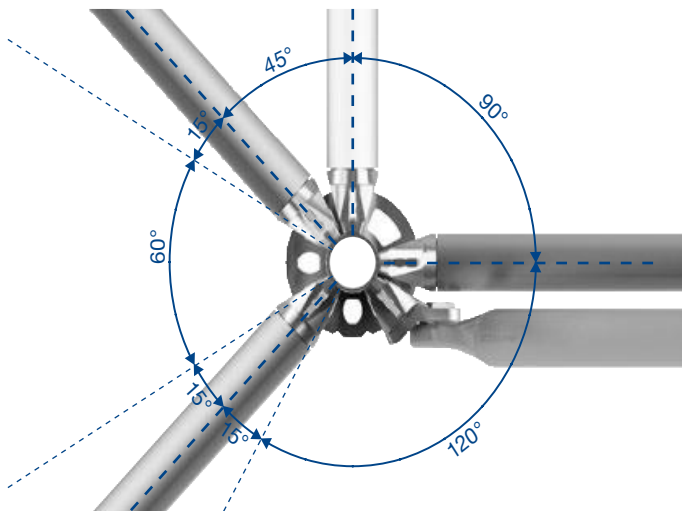
Modular scaffolding systems guarantee fast erection times, high load-bearing capacities, and safety levels for assembly and dismantling as well as during use. Modular scaffolding with nodal points for connecting ledgers, brackets, and other components.

COMPONENT IDENTIFICATION

The following diagram represents the most common Ringlock components used. Most scaffold structures are made from these basic components, yet the Ringlock system comes with a variety of accessories for all your scaffolding requirements.

A 360-degree connection rosette with eight holes provides maximum flexibility

The highly flexible rosettes on our standards create a fully adaptable system in terms of geometry and shape. This flexibility is enhanced by the 45 degree corner plat form, which can cover gaps between steel decks around angled corners, as well as many accessories that make Ringlock suitable for every situation.



All tubes have the standard dimension of 48.3 mm which makes them compatible to all standard scaffolding accessories

ASSEMBLY PROCEDURE

High-speed assembly is made possible thanks to Ringlock's logical assembly sequence, regardless of application



▲ Assembly without base collar.



▲ Assembly with base collar can be assembled by even one person.

Step 1

Position the base jacks and base collars at the planned longitudinal and transverse spacings by laying out ledgers. If necessary, provide load-distributing sole plates (equalising plate, timber planks). Use a Swivel Base Jack in combination with sole plates when erecting on a slope surface.



Step 2

Before the wedges are hammered in, check the horizontal position of the ledgers using a spirit level and check the squareness. After securing the wedge, the scaffold has the appropriate layout for further erection to be carried out easily without any major realignment. To proceed, install the standards on top of the collars and connect them immediately with the next level of ledgers and diagonals.



Step 3

Install the accessories such ladders and toeboards. Before starting the next level, install ledgers which also act as guardrails for the next assembly step.

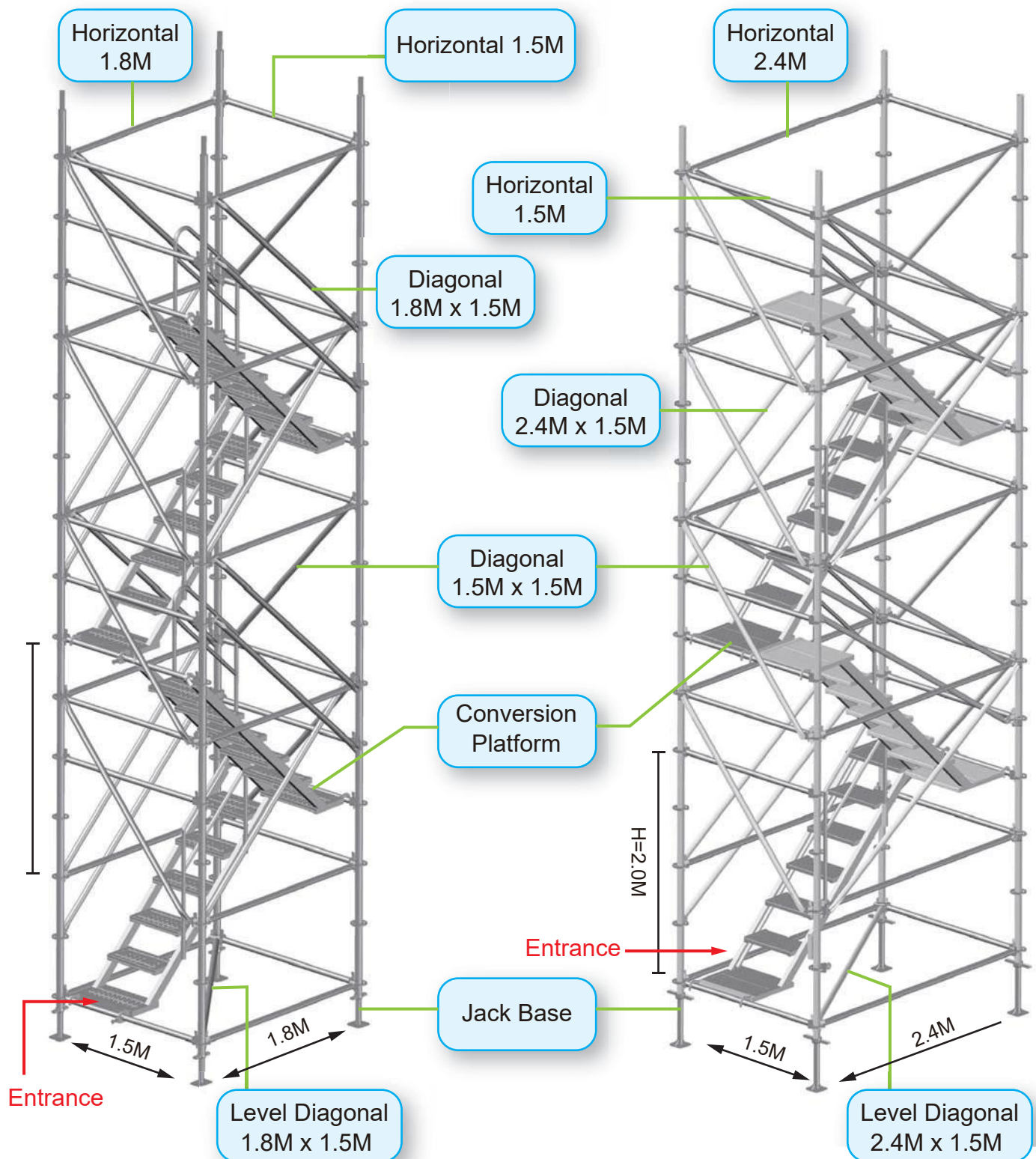
ACCESS STAIRCASE

The Ringlock Access Staircase complies with EN 12810-1, providing a safe and convenient access staircase at construction sites.

Stair units completed with stair treads and top/bottom platforms (conversion platforms) are designed to fit with vertical spacing on the ringlock system.

Not only does the Access Tower comply with the international standards, but also it is conveniently accessible and practical to maximize efficiency at site.

Staircase: L1.8m x W1.5m / L2.4m x W

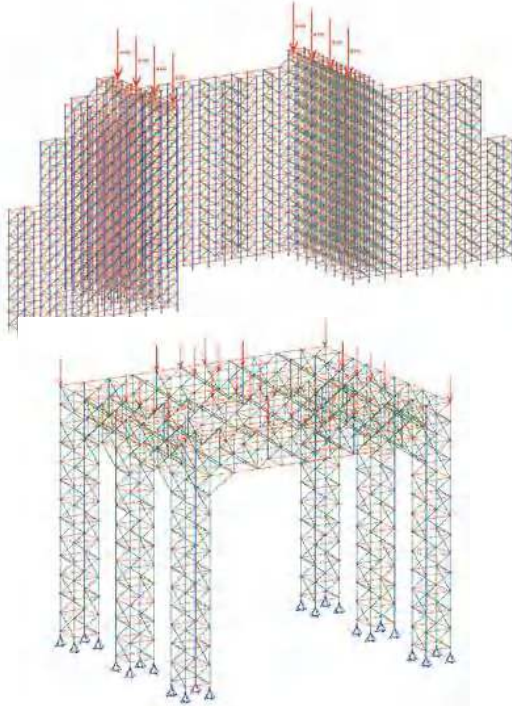


Design

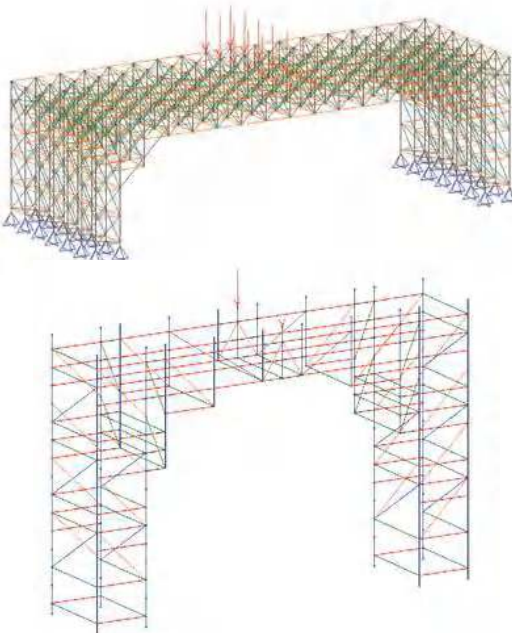
With the extensive work experience, our engineering team can provide the effective and efficient design, including full site assembly details and load calculation.

We are able to serve customers with confidence and quality. If you have any enquiries regarding our products, please feel free to contact us.

1. Staging for Music Concert, Sports Meet and Election Campaign



2. Suspended Scaffolding – Towers and Bridge





Standard

Ringlock Standard is the vertical member of Ringlock scaffolding while provide vertical support for scaffolding.

Description	Model	Unit Weight
Standard 1'8" / 0.5m	RSS050	3.32 kgs
Standard 3'3" / 1.0m	RSS100	5.66 kgs
Standard 4'11" / 1.5m	RSS150	6.89 kgs
Standard 6'6" / 2.0m	RSS200	10.35 kgs
Standard 8'2" / 2.5m	RSS250	12.65 kgs
Standard 9'9" / 3.0m	RSS300	15.03 kgs



Ledger/Horizontal

Ringlock Ledger for Ringlock Scaffolding are the horizontal members of ringlock scaffolding, they provide horizontal support for loads and planks. Ledgers can also be used as mid rail and top or hand guard rails.



Description	Model	Unit Weight
Ledger 0.39m	RSL039	2.35kgs
Ledger 0.73m	RSL073	3.61kgs
Ledger 1.09m	RSL109	4.92kgs
Ledger 1.40m	RSL140	6.09kgs
Ledger 1.57m	RSL157	6.70kgs
Ledger 2.07m	RSL207	8.53kgs
Ledger 2.57m	RSL257	10.37kgs
Ledger 3.05m	RSL305	12.13kgs
Ledger 30.7m	RSL307	12.21kgs

Diagonal Brace

Ringlock Scaffold Diagonal Brace is for the lateral bracing Ringlock scaffolding. It use as hand guard rails in stair systems as well.

Description	Model	Unit Weight
Diagonal Brace 2.0 x 0.73	RSDB073	7.59kgs
Diagonal Brace 2.0 x 1.09	RSDB109	8.12kgs
Diagonal Brace 2.0 x 1.57	RSDB157	9.02kgs
Diagonal Brace 2.0 x 2.07	RSDB207	9.96kgs
Diagonal Brace 2.0 x 2.57	RSDB257	11.03kgs
Diagonal Brace 2.0 x 3.57	RSDB357	12.34kgs





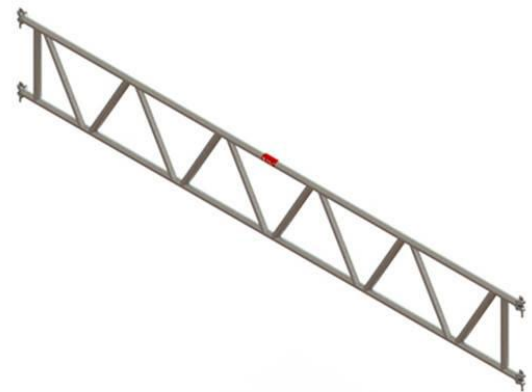
Double Ledger

Ringlock Double Ledger Scaffold are horizontal members of Ringlock scaffolding. Allow for increased load-carrying capacities not possible with a single tube or regular duty ledgers. Provide increased horizontal support for loads and planks.

Description	Model	Unit Weight
Double Ledger 1.57	RSDL157	9.7kgs
Double Ledger 2.07	RSDL207	12.6kgs
Double Ledger 2.57	RSDL257	15.8kgs
Double Ledger 3.07	RSDL307	19.2kgs

Lattice Girder

Ringlock Lattice Girder are horizontal members of ringlock scaffolding that allow for scaffolding over large spans or gaps of 7'2.13m-28'8.52m.



Description	Model	Unit Weight
2.07M Lattice Girder	RSLG207	59.25kgs
5.14M Lattice Girder	RSLG514	121.59kgs
6.14M Lattice Girder	RSLG614	141.63kgs
7.71M Lattice Girder	RSLG771	181.50kgs

Steel Plank 320mm

Scaffold steel planks with a 320mm width are commonly used in a ringlock system. The hooks on the plank can be directly hung on the ledger in a ringlock system in order to form a working surface, making construction processes easier.



Description	Model	Unit Weight
0.73M O-Steel Plank	RSOSP073	7.0kgs
1.09M O-Steel Plank	RSOSP109	9.5kgs
1.40M O-Steel Plank	RSOSP140	11kgs
1.57M O-Steel Plank	RSOSP157	12.5kgs
2.07M O-Steel Plank	RSOSP207	16.5kgs
2.57M O-Steel Plank	RSOSP257	21.0kgs
3.07M O-Steel Plank	RSOSP307	24.6kgs



Steel Plank 190mm

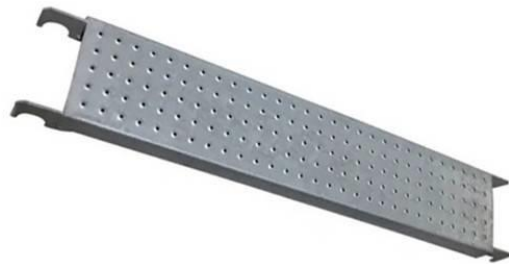
Scaffold steel planks with a 190mm width are commonly used in ringlock systems, and can be used in conjunction with a 320mm wide platform.

Description	Model	Unit Weight
0.73M O-Steel Plank	RSOSSP073	5kgs
1.09M O-Steel Plank	RSOSSP109	7kgs
1.40M O-Steel Plank	RSOSSP140	9kgs
1.57M O-Steel Plank	RSOSSP157	10kgs
2.07M O-Steel Plank	RSOSSP207	12.7kgs
2.57M O-Steel Plank	RSOSSP257	15.5kgs
3.07M O-Steel Plank	RSOSSP307	18.2kgs



SSP Plank 228mm

The 9 inch plank can be hung directly on a horizontal pole in a ringlock system in order to form a working surface. This facilitates construction. The steel plank is also hot dip galvanized.



Description	Model	Unit Weight
SSP Plank 2' x 9"	SSP2	5kgs
SSP Plank 3' x 9"	SSP3	7kgs
SSP Plank 4' x 9"	SSP4	9kgs
SSP Plank 5' x 9"	SSP5	10.8kgs
SSP Plank 6' x 9"	SSP6	12.75kgs
SSP Plank 7' x 9"	SSP7	14.65kgs
SSP Plank 8' x 9"	SSP8	16.57kgs
SSP Plank 9' x 9"	SSP9	18.5kgs
SSP Plank 10' x 9"	SSP10	20.4kgs

Aluma Plank 240mm

The hooks on the low profile steel plank are larger than the hooks found on the common plank. This allows it to be hung directly on the horizontal pole in the ringlock system, and form a working system.

Description	Model	Unit Weight
3' Aluma Plank 240mm	ASP3	8.45kgs
4' Aluma Plank 240mm	ASP4	10.30kgs
5' Aluma Plank 240mm	ASP5	12.10kgs
6' Aluma Plank 240mm	ASP6	13.90kgs
7' Aluma Plank 240mm	ASP7	15.70kgs
8' Aluma Plank 240mm	ASP8	17.50kgs
10' Aluma Plank 240mm	ASP10	21.0kgs





Base Collar

The scaffold start collar comes with a single rosette installed on the base jack, and acts as a base. The start collar is also surface coated in a hot dip galvanizing process. acting as a base. And this start collar is conducted with hot-dip galvanizing.

Description	Model	Unit Weight
Start Collar 0.24m	RSBS23	1.8kgs
Start Collar 0.30m	RSBS30	2.4kgs

Adjustable Base Jack

A scaffold adjustable base jack is used as the foundation for the scaffold. The height is adjustable, so that it can adapt to uneven construction surfaces and ensures the entire scaffolding system remains level.

Description	Model	Unit Weight
24" Adjustable Base Jack	SJB24	3.8kgs



Adjustable Swivel Jack

he scaffold swivel base jack is the foundation for a ringlock scaffold. It is adjustable in height and adaptable to uneven construction ground. The base jack can also be tilted, making it applicable to slopes and other specialized areas, while keeping the entire scaffold system stable and level.

Description	Model	Unit Weight
24" Swivel Base Jack	SSWBJ24	4.2kgs



Scaffold Toe Board

Scaffold steel toe boards are used to enclose scaffolding work areas in order to prevent tools and other objects from falling to the ground. The surface treatment includes hot dip galvanization or electro-galvanization.

Description	Model	Unit Weight
3'6" Steel Toe board	RSTB36	3.7kgs
3'10" Steel Toe board	RSTB310	4kgs
4'0" Steel Toe board	RSTB40	4.2kgs
5'0" Steel Toe board	RSTB50	5kgs
5'2" Steel Toe board	RSTB52	5.4kgs
6'0" Steel Toe board	RSTB60	6kgs
7'0" Steel Toe board	RSTB70	7kgs
8'0" Steel Toe board	RSTB80	8kgs
10'0" Steel Toe board	RSTB100	10kgs



Scaffold Ladder & Bracket

The vertical ladder can be attached either inside or outside of the scaffold system with the use of a simple ladder bracket. This gives users safe access to go up and down on the scaffolding. The surface is hot dip galvanized.

Description	Model	Unit Weight
Steel Ladder 10'/3.05m	RSWL10	22kgs
Steel Ladder 5'/1.52m	RSWL5	11.5kgs
Steel Ladder 3'/0.914m	RSWL3	8.2kgs
Steel Ladder Bracket	SLBW	3.3kgs

Monkey Ladder

The hooks on the scaffold monkey ladder can be hung on the horizontal in the ringlock system in order to give workers safe access to move up and down. The surface is hot dip galvanized.

Description	Model	Unit Weight
2.2MM Monkey Ladder	RSML2220	12kgs
2.7MM Monkey Ladder	RSML2775	15.5kgs
3.3MM Monkey Ladder	RSML3330	18.5kgs





Lightweight Staircase

Lightweight Stair case is an independent research construction ladder based on market needs. Its distinctive hook design, which is convenient and firm, makes safe construction work possible. The punched holes in galvanized steps enable a well drainage and corrosion & skid prevention. In combination with scaffolding structure, the step ladder with hook is convenient, safe and functional construction equipment can be used in any weather condition.

Description	Model	Unit Weight
1829mm Lightweight Stair	RSLS1829	27kgs
2133mm Lightweight Stair	RSLS2133	35kgs

Steel Stair

Steel Stair is the stairway solutions for temporary access. Steel Stairs towers are constructed utilizing scaffolding frames, cross braces, guardrail brace, planks, stairs. The stair towers are set for 7' 8' 10' scaffolding bay or any customized bay, and for 6'6" heights to meet different frame heights.

Description	Model	Unit Weight
7x6'6"(2.13x2m) Steel Stair	RSSS70	90kgs
8'x6'6"(2.44x2m) Steel Stair	RSSS80	100kgs
10'x6'6"(3.05x2m) Steel Stair	RSSS100	110kgs



Aluminium Stair

It is simple to construct a 4-standard stairway tower, either integrated into the scaffolding or as a free-standing access structure anchored on the building. Both parallel and opposite stairways are possible here. There is no hindrance to work on scaffolding with this version.

Description	Model	Unit Weight
2.57m Layher Staricase	RSLS257	28.5kgs
3.07m Layher Staricase	RSLS307	31.5kgs
2.57m Handrail	RSLH257	36kgs
3.07m Handrail	RSLH307	38kgs



Ringlock Crazy Leg

Ringlock Scaffold Crazy Legs are used to create access points mid bay, a second ledger must be installed below the decked lift so that the post can be attached at two points.

This will enable the fitting of double guardrails and a ladder safety gate.

Description	Model	Unit Weight
Crazy Leg	VCL	8.5kgs



Swing Gate

The scaffold safety gate provides safe access to the working platform. The sprung gate structure ensures that the gate will be tightly closed during the construction process. This gate is hot dip galvanized.



Description	Model	Unit Weight
Scaffold Swing Gate	RSSG	10.6kgs

Side Bracket

Ringlock Side Bracket is used to extend the working platform closer to the building structure in cases where the main scaffold cannot be erected directly next to the working face.

Description	Model	Unit Weight
1 Board Side Bracket	RBB12	4.6kgs
2 Board Side Bracket	RBB24	7kgs
3 Board Side Bracket	RBB34	8.5kgs





Caster Adaptor

Ringlock Caster Adaptor is used as a base connection point to Caster and provides a base spigot to use with standards or Base Collars to begin scaffold construction.

Description	Model	Unit Weight
Adapter For Castoer	RSLC12ADT	4.5kgs

Castor Wheel

Ringlock Castor wheel for Scaffolding can provide mobility to a scaffold tower, which allowing it to roll across the flat ground.



Description	Model	Unit Weight
8" Caster Wheel	CW8	5.5kgs
12" Caster Wheel	CW12	19.5kgs



Spigot Adapter Clamp

The Spigot Adapter Clamp allows the connection of Ringlock Standards at intermediate locations along the length of O-Type Ledgers, Truss Ledgers, and Girders.

Description	Model	Unit Weight
2.57m Layher Staricase	RSLS257	28.5kgs
3.07m Layher Staricase	RSLS307	31.5kgs
2.57m Handrail	RSLH257	36kgs
3.07m Handrail	RSLH307	38kgs



Ringlock Leg Lock

Ringlock Leg Lock is used for attaching the bottom rosette of the top standard to the top rosette of the bottom standard.

Description	Model	Unit Weight
Leg lock	LLC	3.8kgs



Rosette Clamp

Scaffold rosette clamps are easy to install on a needed ringlock with standards. The surface is hot dip galvanized.



Description	Model	Unit Weight
Rosette Clamp	RRC	1.2kgs

Wedge Head Coupler, Rigid

One end of the wedge head coupler right angle is connected to the ringlock, with the other arbitrarily connected to a tube rigid. The surface treatment is hot dip galvanization.

Description	Model	Unit Weight
WEDGE HEAD COUPLER, RIGID	WCR	1.2kgs





Wedge Head Coupler, Swivel

One end of the wedge head coupler right angle is connected to the ringlock, with the other arbitrarily connected to a tube. The surface treatment is hot dip galvanization

Description	Model	Unit Weight
Wedge Head Coupler, Swivel	WCS	1.4kgs

Ringlock Twin Wedge

Twin wedge coupler allows the connection of ringlock standards to enforce its strength.

Description	Model	Unit Weight
Twin Wedge	RSTW	1.5kgs



Scaffold Wall Tie

scaffold wall ties is essential that all scaffolds are properly tied into the building or structure at intervals to ensure the safety and stability of the scaffold.



Description	Model	Unit Weight
Scaffold Wall Tie	RSWT	3.5kgs
Eyebolt with Plug	EWP	0.5kgs



"APAC" is the leader supplier of scaffolding equipment
Your scaffolding safety expert and partner in China

Add: 388 Dongwu South Rd. , Suzhou City, R.P. China 215104

Tel: +86 512-6670 0084

W: www.apacsafety.com

Fax: +86 512-6670 0084

E: sales@apacssafety.com