



# CUPLOCK SYSTEM PRODUCT CATALOG

AUSTRALIA ONLY

[www.apacscaffold.com](http://www.apacscaffold.com)

 **SCAFFOLDING**  
— BY APAC GROUP —

# TABLE OF CONTENTS

<b>ABOUT APAC</b>	<b>02</b>
<b>OVERVIEW</b>	<b>03-04</b>
<b>COMPONENTS</b>	<b>05-31</b>



Spigotted Standards	05
Cuplock Ledgers	06
Cuplock Transom	07
Cuplock Diagonal Brace	08
Cuplock Tie Bar	09
Platform Brackets	10
Transom Beams	11
Cuplock Transom Truss	12
Ladder Access Transom	13
Adjustable Base Jack	14
Scaffold U Head Jack	15
Ultra Cuplock Base Jack	16
U Head Jack Adaptor	17
Steel Planks	18
Lapping Plate	19
Mesh Guard	20
Construction Stairs (1.5m Rise)	21
Construction Stairs (2.0m Rise)	22
Stair Handrails	23
Aluminum Stretcher Stair	24
Toe Board Bracket	25
Gaurdrail Post	26
LVL Scaffold Planks	27
Fire Retardant Containment Mesh	28
Chain Wire & Scaffmesh	29
Scaffold Rack	30
Scaffold Cage	31

# ABOUT

## APAC SCAFFOLD



Founded in 2004, APAC scaffold specializes in supplying of system scaffolding & falseworks.

The company has always strived to set and maintain the very highest of standard in safety and the supply of the highest quality formwork and scaffolding components.

Our key products: Ringlock scaffolding system, Cuplock scaffolding system, Aluminum scaffolding system, Shoring props and Formwork Products. Focus on the technical development and to meet the needs of our customers we adopt a lot of new technology and inspirational ideas to our products.

Our scaffoldings which are widely used in residential, shipbuilding, mining, insulation, oil & petroleum, airports, bridges etc.

# OVERVIEW

## APAC'S Capabilities

### [ EXPERTISE ]

Between most of our team members we have decades of experience in the industry. Many sales are mechanical background, can better understand the customer's project needs, in our view, this is very important in international trade, is conducive to less customer communication costs.

In dealing with us, you have the benefit of dealing with an experienced, professional, and motivated team who's committed to attention to detail, working to a budget, a timeline and qualified products.

### [ PRODUCTIVITY ]

APAC Scaffold is a professional construction material supplier, producing various equipment for construction industry, such as Aluminium scaffolding, ringlock scaffolding, cuplock scaffolding, shoring prop, and related accessories.

We operate professional production workshops and equipment, including punching machines, welding machines, pipe cutting machines, shearing machines, bending machines, screw machines etc. After years of hard work, we can produce up to 30,000 tons of equipments annually and our products are sold in many countries.

### [ QUALITY ASSURANCE ]

We have established a quality assurance department to make sure that our products meet customer requirements. Based on the ISO9001 Quality Management System, our professional team strictly examines every procedure, from supplier verification to examination of raw materials, production, and finished products, to ensure the high quality of products.

We fully understand the scaffolding standard such as EN12811, EN12810, AS/NZS1576.2, ANSI/SSFI SC100-5/05, NCH2501, GOST 27321-2018 and GOST 24258-88 for different countries.

# OVERVIEW

## Product Traceability

All APAC scaffold componets are stamped with traceability marks.

### KEY |

**Batch Number : APACYYXXXX**

**APAC= APAC Scaffold**

**YY= Year of Manufacture**

**XXXX= Order Number**



# CUPLOCK

## Spigotted Standards

CUPLOK spigotted Standards are principally used in access scaffolding applications and also as a base structure for formwork support applications. They have cup joints at 500mm intervals. The captive mobile top cups are designed to endure rough site handling and welded bottom cups are made from high quality steel.



\*Ultra Cuplock is available per your request

Item No.	Description	Height	Weight	Packaging	
		Meters	kgs	Qty.	Type
AS-CSS05	CUPLOK spigotted Standard 0.5m	0.5	3.9	200	Rack
AS-CSS10	CUPLOK spigotted Standard 1.0m	1.0	6.9	100	Rack
AS-CSS15	CUPLOK spigotted Standard 1.5m	1.5	9.9	100	Rack
AS-CSS20	CUPLOK spigotted Standard 2.0m	2.0	13.0	100	Rack
AS-CSS25	CUPLOK spigotted Standard 2.5m	2.5	16.0	100	Rack
AS-CSS30	CUPLOK spigotted Standard 3.0m	3.0	19.0	100	Rack

# CUPLOCK

## Cuplock Ledgers

The CUPLOK Ledgers are manufactured from 48.3 mm O.D. tube with forged steel blade ends which locate into bottom cups of the Standards and are locked in place by the the corresponding top cups. Ledgers are available in various lengths to provide the desired grid dimension for scaffolding or formwork.

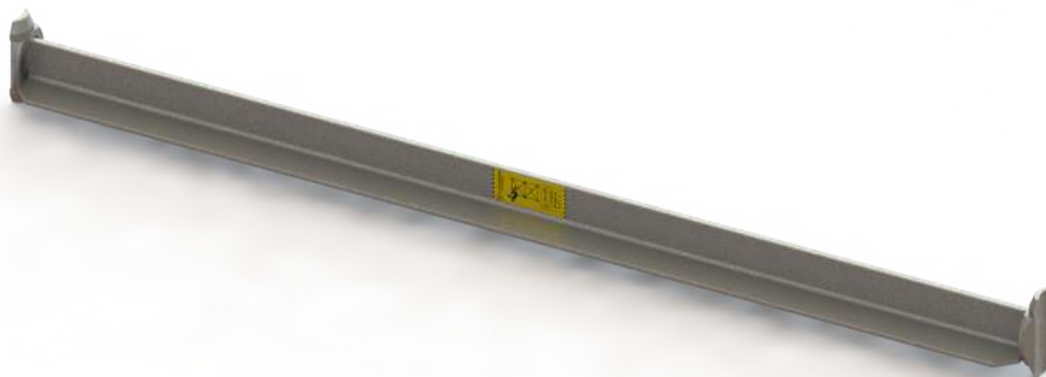


Item No.	Description	Length	Weight	Packaging	
		Meters	kgs	Qty.	Type
AS-CL034	CUPLOK Ledger 0.34m	0.34	1.7	510	Rack
AS-CL061	CUPLOK Ledger 0.61m	0.61	2.6	340	Rack
AS-CL083	CUPLOK Ledger 0.83m	0.83	3.4	340	Rack
AS-CL105	CUPLOK Ledger 1.05m	1.05	4.2	170	Rack
AS-CL127	CUPLOK Ledger 1.27m	1.27	5.0	170	Rack
AS-CL152	CUPLOK Ledger 1.52m	1.52	5.9	170	Rack
AS-CL183	CUPLOK Ledger 1.83m	1.83	7.0	170	Rack
AS-CL244	CUPLOK Ledger 2.44m	2.44	9.2	170	Rack
AS-CL305	CUPLOK Ledger 3.05m	3.05	11.4	170	Rack

# CUPLOCK

## Cuplock Transom

CUPLOK Transoms are fabricated from twin structural angles fixed back to back with a drop forged blade attached to each end. The 2.44m Transom has an additional web member welded below the flange section for added strength. The transom blade locates into a bottom cup and is locked in position by the top cup.



Item No.	Description	Length	Weight	Packaging	
		Meters	kgs	Qty.	Type
AS-CT031	CUPLOK Transom 0.31m	0.31	2.6	225	Rack
AS-CT061	CUPLOK Transom 0.61m	0.61	5.0	170	Rack
AS-CT083	CUPLOK Transom 0.83m	0.83	6.6	170	Rack
AS-CT105	CUPLOK Transom 1.05m	1.05	7.9	75	Rack
AS-CT127	CUPLOK Transom 1.27m	1.27	9.7	75	Rack
AS-CT152	CUPLOK Transom 1.52m	1.52	11.5	75	Rack
AS-CT183	CUPLOK Transom 1.83m	1.83	13.7	75	Rack
AS-CT244	CUPLOK Transom 2.44m	2.44	22.4	75	Rack



# CUPLOCK

## Diagonal Braces

CUPLOCK Diagonal Braces are made from 48.3mm dia tube with a swivel blade at each end. Their function is to provide transverse and longitudinal bracing to scaffold structures. The brace is available in various lengths to suit the combination of bay widths and heights.



Item No.	Description	Length	Weight	Packaging	
		Meters	kgs	Qty.	Type
AS-CDB162	CUPLOCK Brace 1.62m	1.62	6.8	170	Rack
AS-CDB171	CUPLOCK Brace 1.71m	1.71	7.2	170	Rack
AS-CDB183	CUPLOCK Brace 1.83m	1.83	7.8	170	Rack
AS-CDB197	CUPLOCK Brace 1.97m	1.97	8.2	170	Rack
AS-CDB214	CUPLOCK Brace 2.14m	2.14	8.8	170	Rack
AS-CDB237	CUPLOCK Brace 2.37m	2.37	9.9	170	Rack
AS-CDB251	CUPLOCK Brace 2.51m	2.51	10.0	170	Rack
AS-CDB271	CUPLOCK Brace 2.71m	2.71	10.9	170	Rack
AS-CDB286	CUPLOCK Brace 2.86m	2.86	11.4	170	Rack
AS-CDB316	CUPLOCK Brace 3.16m	3.16	12.5	170	Rack
AS-CDB349	CUPLOCK Brace 3.49m	3.49	13.7	170	Rack
AS-CDB365	CUPLOCK Brace 3.65m	3.65	13.9	170	Rack

# CUPLOCK

## Cuplock Tie Bar

CUPLOK Tie bars are used to interlock the ends of Platform Brackets and to provide a means of preventing the Planks from sliding off the end of the bracket. The studs at the end of the tie locate into slots in the Platform Brackets.



Item No.	Description	Length	Weight	Packaging	
		Meters	kgs	Qty.	Type
AS-CTB061	CUPLOK Tie Bar 0.61m	0.61	1.8	300	Rack
AS-CTB083	CUPLOK Tie Bar 0.83m	0.83	2.4	300	Rack
AS-CTB105	CUPLOK Tie Bar 1.05m	1.05	3.0	150	Rack
AS-CTB127	CUPLOK Tie Bar 1.27m	1.27	3.7	150	Rack
AS-CTB152	CUPLOK Tie Bar 1.52m	1.52	4.5	150	Rack
AS-CTB183	CUPLOK Tie Bar 1.83m	1.83	5.3	150	Rack
AS-CTB244	CUPLOK Tie Bar 2.44m	2.44	7.0	150	Rack
AS-CTB305	CUPLOK Tie Bar 3.05m	3.05	10.8	150	Rack

# CUPLOCK

## Platform Brackets

CUPLOCK Platform Brackets enable 1, 2 or 3 plank wide platforms to be placed between the scaffold and the workface. The blade end locates into the cup on the Standard and the ends of the brackets are connected to each other with Tie Bars.



Item No.	Description	Length	Weight	Packaging	
		Meters	kgs	Qty.	Type
AS-CPB1	CUPLOCK Platform Bracket 1 Plank	0.28	2.3	160	Rack
AS-CPB2	CUPLOCK Platform Bracket 2 Plank	0.53	5.8	80	Rack
AS-CPB3	CUPLOCK Platform Bracket 3 Plank	0.78	7.8	80	Rack

# CUPLOCK

## Transom Beams

CUPLOK Transom Beams are designed for special duty load applications. Allows high deck capacity and large grid patterns.

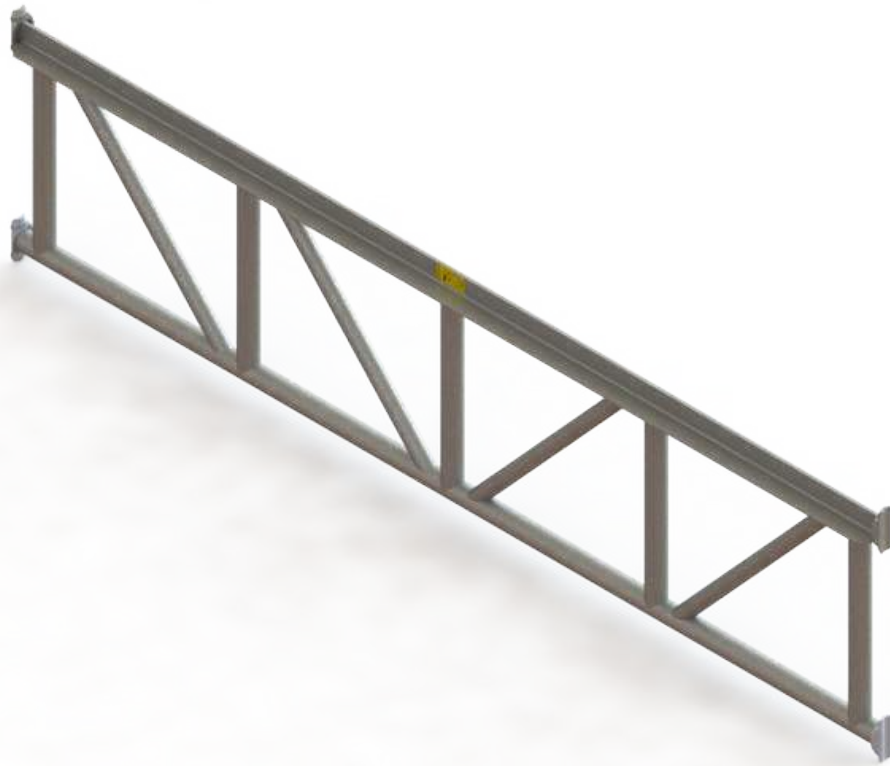


Item No.	Description	Length	Weight	Packaging	
		Meters	kgs	Qty.	Type
AS-CTBEAM183	CUPLOK Transom Beam 1.83m	1.83	21	15	Rack
AS-CTBEAM244	CUPLOK Transom Beam 2.44m	2.44	27	15	Rack

# CUPLOCK

## Cuplock Transom Truss

CUPLOK Transom Truss is designed for high capacity loading platforms and overhead protective structures. Connects at 4 points, enhancing the rigidity of the scaffold.

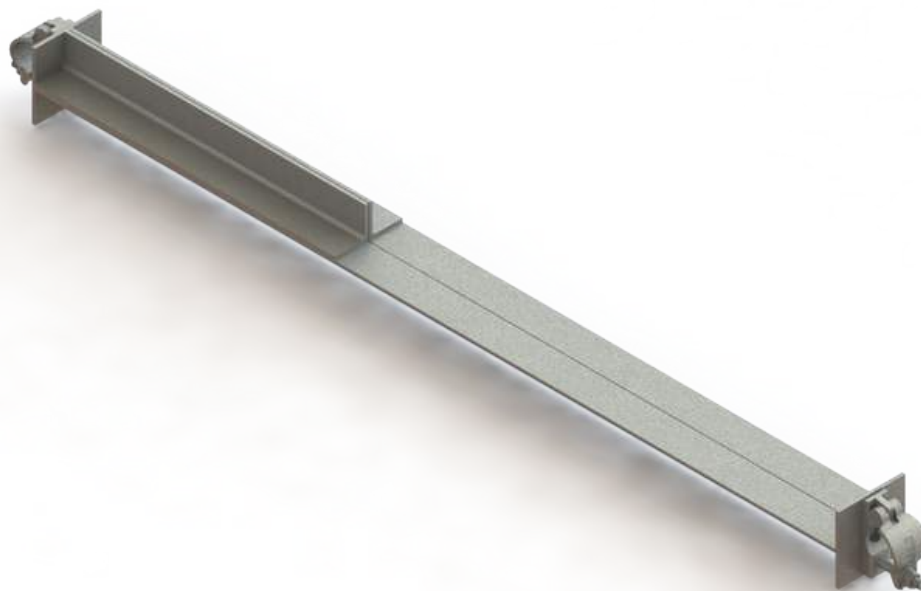


Item No.	Description	Length	Weight	Packaging	
		Meters	kgs	Qty.	Type
AS-CTT183	CUPLOK Transom Truss 1.83m	1.83	40	15	Rack
AS-CTT244	CUPLOK Transom Truss 2.44m	2.44	52	15	Rack
AS-CTT305	CUPLOK Transom Truss 3.05m	3.05	56	15	Rack

# CUPLOCK

## Ladder Access Transom

CUPLOK Ladder Access Transom is used to provide an opening in a bay allowing a ladder to pass through it. The L.A. Transom is attached to and spans between the Ledgers in the bay.



Item No.	Description	Length	Weight	Packaging	
		Meters	kgs	Qty.	Type
AS-CLAT105	CUPLOK Ladder Access Transom 1.05m	1.05	10.6	200	Rack
AS-CLAT127	CUPLOK Ladder Access Transom 1.27m	1.27	12.6	100	Rack
AS-CLAT183	CUPLOK Ladder Access Transom 1.83m	1.83	15.2	100	Rack
AS-CLAT244	CUPLOK Ladder Access Transom 2.44m	2.44	18.0	100	Rack

# CUPLOCK

## Adjustable Base Jack

Ringlock adjustable base jack is used for leveling the scaffold-standards at the same height. OD: 34mm. Surface treatment: Hot dip galvanized or Electroplated.



Item No.	Description	Length	Weight	Packaging	
		Meters	kgs	Qty.	Type
AS-SBJ06	Solid Base Jack	0.65	6.5	500	Rack

# CUPLOCK

## Scaffold U Head Jack

U shaped head to support a standard or vertical pole over a scaffold standard. It is attached to a solid thread rod, which is 500mm long and 34 mm OD.



Item No.	Description	Length	Weight	Packaging	
		Meters	kgs	Qty.	Type
AS-AUHJ06	Adjustable U-Head Jack	0.65	9	500	Rack



# CUPLOCK

## Ultra Cuplock Base Jack

The ULTRA CUPLOCK Base Jack is used with formwork systems. It has a solid stem of 36mm nominal diameter which has a nut restraint to ensure the stem always has a minimum engagement of 150mm into the Standard.

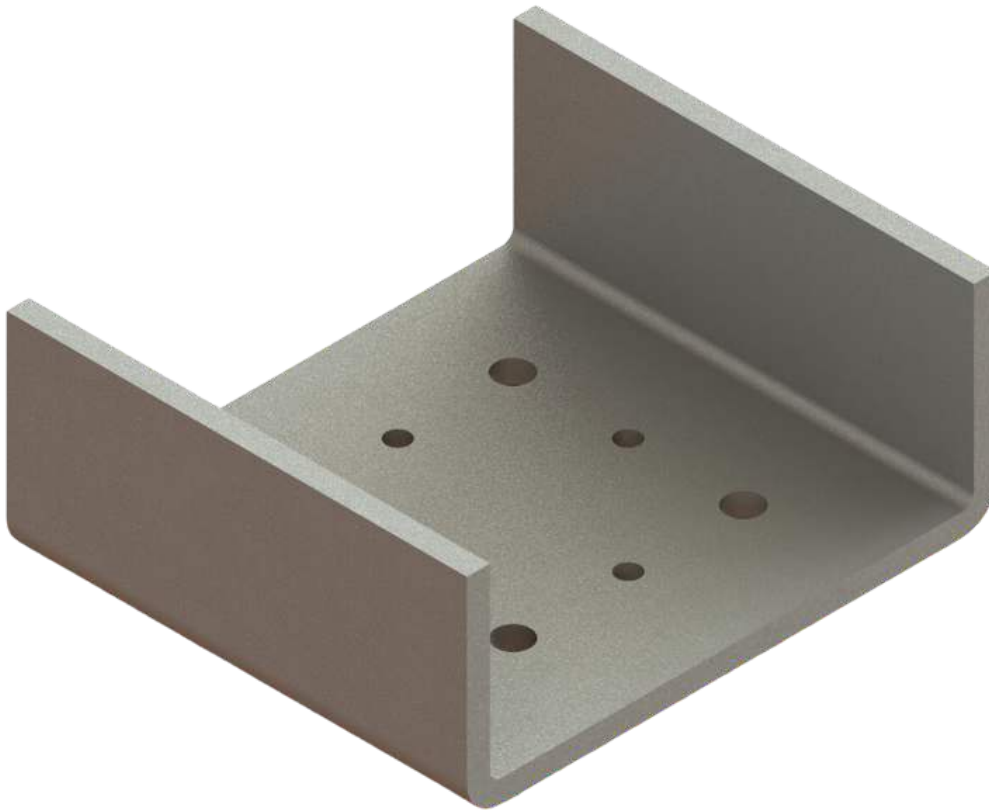


Item No.	Description	Length	Weight	Packaging	
		Meters	kgs	Qty.	Type
AS-UCBJ08	Ultra Cuplock Base Jack	0.8	10	500	Rack

# CUPLOCK

## U Head Jack Adaptor

The U head Jack Adaptor is attached to the Ultra Cuplock Base Jack plate used with formwork systems. The U-Head is capable of accepting twin 100mm wide bearers. It has a solid stem of 36mm nominal diameter which has a nut restraint to ensure the stem always has a minimum engagement of 150mm into the Standard.

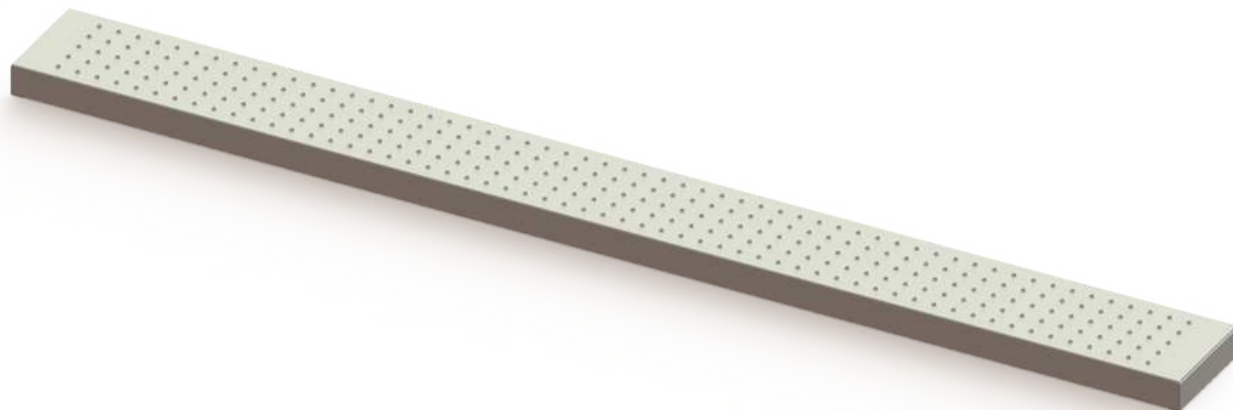


Item No.	Description	Length	Weight	Packaging	
		Meters	kgs	Qty.	Type
AS-CUHJA	U Head Jack Adaptor	0.2	6.5	1000	Rack

# CUPLOCK

## Steel Planks

Planks to suit CUPLOK are formed from galvanised steel sheet with a perforated tread to provide a non-skid surface. Perforations are taken close to the ends and edges of the Plank to provide even coverage over the whole assembled deck.



Item No.	Description	Length	Weight	Packaging	
		Meters	kgs	Qty.	Type
AS-CSP061	CUPLOK Steel Planks 0.61m Bay	0.61	4.8	100	Rack
AS-CSP083	CUPLOK Steel Planks 0.83m Bay	0.83	5.0	50	Rack
AS-CSP105	CUPLOK Steel Planks 1.05m Bay	1.05	7.2	50	Rack
AS-CSP127	CUPLOK Steel Planks 1.27m Bay	1.27	8.5	50	Rack
AS-CSP150	CUPLOK Steel Planks 1.50m Bay	1.50	9.2	50	Rack
AS-CSP183	CUPLOK Steel Planks 1.83m Bay	1.83	11.5	50	Rack
AS-CSP244	CUPLOK Steel Planks 2.44m Bay	2.44	15.5	50	Rack
AS-CSP305	CUPLOK Steel Planks 3.05m Bay	3.05	19.5	50	Rack

# CUPLOCK

## Lapping Plate

Steel lapping plates have a folded returned to lock in between steel boards. Lap plates / panels fills the gaps minimising trip hazard and deck weight variances.

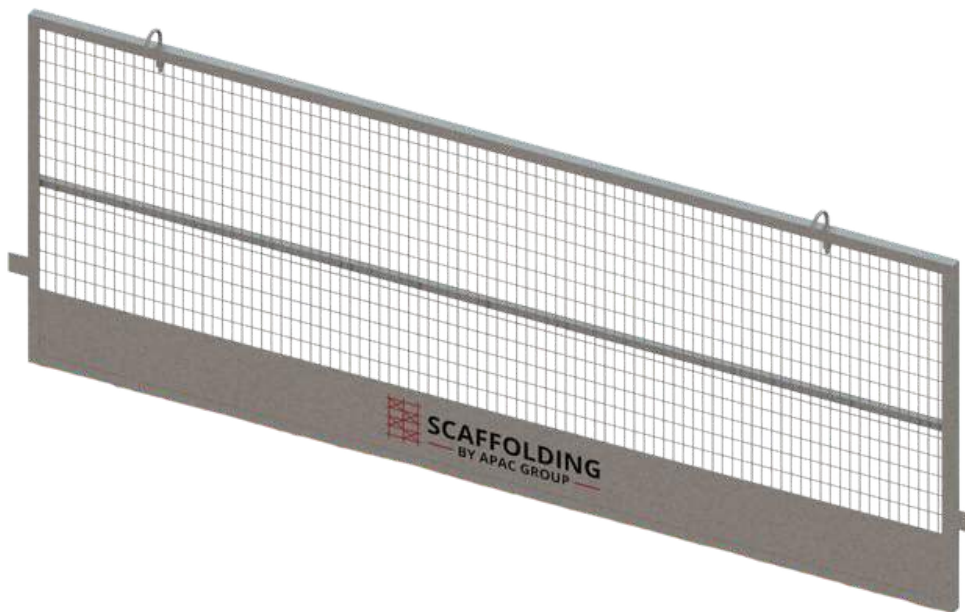


Item No.	Description	Length	Length	Weight	Packaging	
		Meters	Width	kgs	Qty.	Type
AS-KLP1	1 Board Lapping Plate	0.7	0.23	4.2	450	Rack
AS-KLP2	2 Boards Lapping Plate	0.7	0.46	9.4	300	Rack
AS-KLP3	3 Boards Lapping Plate	0.7	0.68	13.7	225	Rack

# CUPLOCK

## Mesh Guard

Mesh Panels are hung from the guardrail to provide a full protection screen 1 metre high along the length of the platform. The unit incorporates a built in kick plate and typically a midrail is not used when mesh guards are in place. Available in the nominal bay lengths.



Item No.	Description	Length	Weight	Packaging	
		Meters	kgs	Qty.	Type
AS-KMG127	Kwikstage Mesh Guard 1.27m	1.29	12.8	35	Rack
AS-KMG183	Kwikstage Mesh Guard 1.83m	1.85	17.6	35	Rack
AS-KMG244	Kwikstage Mesh Guard 2.44m	2.46	22.6	30	Rack

# CUPLOCK

## Construction Stairs (1.5m Rise)

The Construction Stair enables a stairway to be assembled within a 2.44m x 1.27m bay. Each end of the Stair is supported by a Transom. The width of the unit is half the bay width enabling two units to sit on a Transom, thus a continuous staircase can be built up the full height of the scaffold.



Item No.	Description	Weight	Packaging	
		kgs	Qty.	Type
AS-CACS15	1.5m Rise x 2.4 x 0.6m Wide bay Construction Stair	20	24	Rack

# CUPLOCK

## Construction Stairs (2.0m Rise)

The modular stair enables a stairway to be assembled within a 2.44 x 1.27m CUPLOCK bay providing access to working platform. Each end of the Stair is supported by a Transom. The width of the unit is half the bay width enabling two units to sit on a Transom, thus a continuous stairway can be built up the full height of the scaffold.

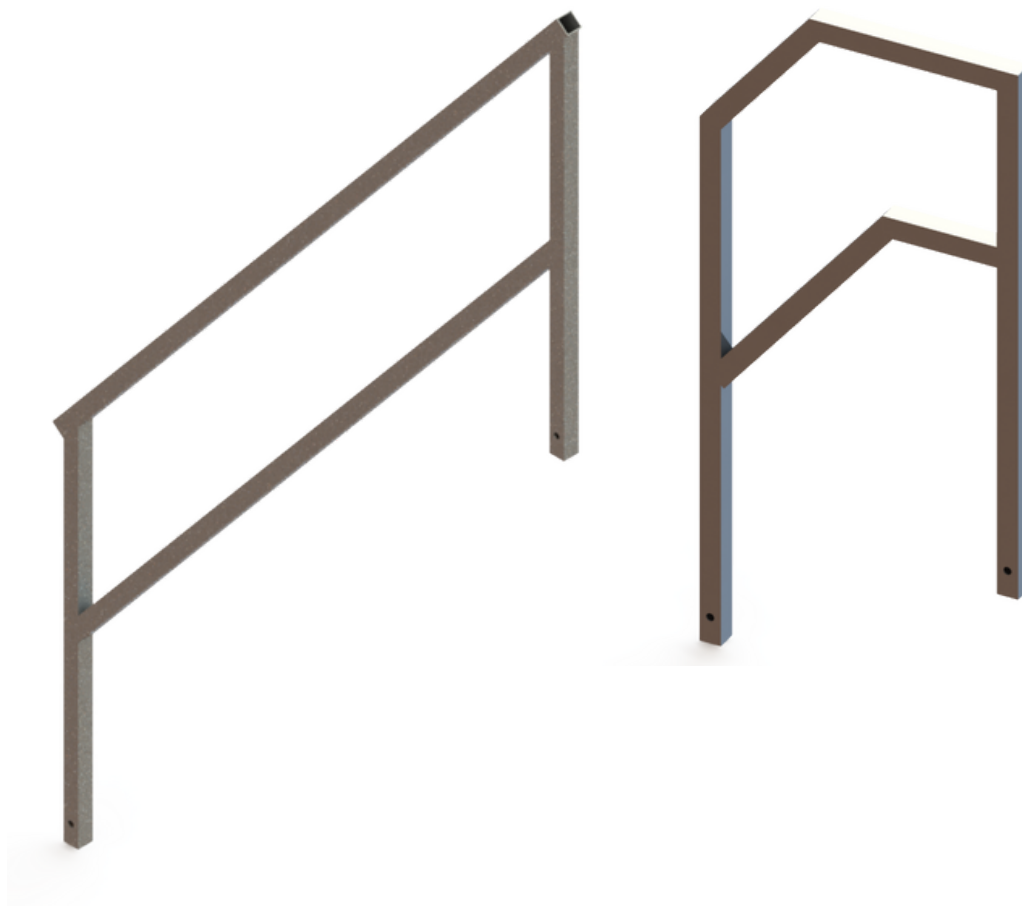


Item No.	Description	Weight	Packaging	
		kgs	Qty.	Type
AS-CACS20	2.0m Rise x 2.4 x 0.6m Wide Bay Construction Stair	37	24	Rack

# CUPLOCK

## Stair Handrails

The stair handrails are used to provide handrails on the inner side and outer side of the Aluminium Stair Platforms.



Item No.	Description	Length	Weight	Packaging	
		Meters	kgs	Qty.	Type
AS-KSIH	Intermediate Handrail	1.2	7.5	30	Rack
AS-KSEH	Exit Handrail	0.5	4.5	30	Rack



# CUPLOCK

## Aluminum Stretcher Stair

The aluminum stretcher stairs are pre-fabricated and designed to fit in a 1.2m x 2.4m bay with a 1.0m or 2.0m rise (lift).

The stairs are 585mm wide with a rise of 230mm. Two stairs will fit perfectly side by side on a 1.2m bay.



Item No.	Description	Length	Weight	Packaging	
		Meters	kgs	Qty.	Type
AS-KASS1	1.0m Rise Aluminium Stretcher Stair	2.44	20	60	Rack
AS-KASS2	2.0m Rise Aluminium Stretcher Stair	2.44	36	60	Rack

# CUPLOCK

## Toe Board Bracket

Toe board brackets also known as toe board clips are Clamped to the standard with a captive wedge to hold the batten toe board vertically in place.



Item No.	Description	Weight	Packaging	
		kgs	Qty.	Type
AS-KTBB	Toe Board Bracket	0.85	1000	Cage

# CUPLOCK

## Gaurdrail Post

Used for edge protection slabs or balconies. Bolted into concrete with 14mm Dyna Bolts. Compatible with all sizes of ledgers which makes it very versatile.



Item No.	Description	Length	Weight	Packaging	
		Meters	kgs	Qty.	Type
AS-CGP120	Cuplock Guardrail Post	1.2	10	150	Rack

# CUPLOCK

## LVL Scaffold Planks

LVL Scaffold planks are Structural laminated veneer lumber and designed to be used as a non-modular scaffold plank as a part of a working platform in accordance with the requirements of AS/NZS 1576.1 and AS/NZS 1577.



Item No.	Description	Length	Weight	Packaging	
		Meters	kgs	Qty.	Type
AS-KLSP120	1.2m LVL Scaffold Plank	1.2	6.7	75	Rack
AS-KLSP150	1.5m LVL Scaffold Plank	1.5	8.4	75	Rack
AS-KLSP180	1.8m LVL Scaffold Plank	1.8	10.0	75	Rack
AS-KLSP240	2.4m LVL Scaffold Plank	2.4	13.4	75	Rack
AS-KLSP300	3.0m LVL Scaffold Plank	3.0	16.8	75	Rack
AS-KLSP360	3.6m LVL Scaffold Plank	3.6	20.1	75	Rack
AS-KLSP480	4.8m LVL Scaffold Plank	4.8	26.9	75	Rack

# CUPLOCK

## Fire Retardant Containment Mesh

The fire retardant containment mesh is a specially designed system that effectively encloses scaffolding from the inside, ensuring the safety of workers at height.



Item No.	Description	Length	Weight	Packaging	
		Meters	kgs	Qty.	Type
AS-KFRM1	1.95m x 10m FR Containment Mesh	1.95	15.6	8	Bundle
AS-KFRM2	0.95m x 10m FR Containment Mesh	0.95	7.6	16	Bundle

# CUPLOCK

## Chain Wire & Scaffmesh

This chain wire & scaffmesh consists of a combination of hot-dip galvanized chain link wire and scaffolding mesh for use on scaffolding edges to prevent debris from falling.



Item No.	Description	Length	Weight	Packaging	
		Meters	kgs	Qty.	Type
AS-KCWS10	1.8m x 10m Chain Wire and Scaffmesh	10	20	60	Rack
AS-KCWS15	1.8m x 15m Chain Wire and Scaffmesh	15	31	60	Rack

# CUPLOCK

## Scaffold Rack

A steel structure built to hold goods in a stable fashion while being lifted by a forklift to stock, stack-up and transport.

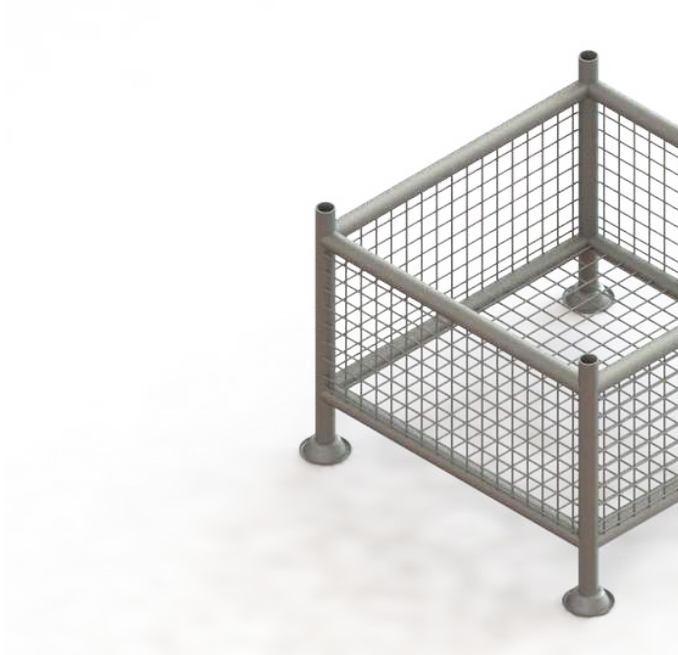


Item No.	Description	Length	Width	Weight
		Meters	Meters	kgs
AS-KSR	Kwikstage Scaffold Rack	0.9	0.9	35

# CUPLOCK

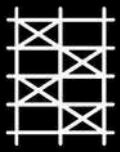
## Scaffold Cage

A steel structure built to hold goods in a stable fashion while being lifted by a forklift to stock, stack-up and transport.



Item No.	Description	Length	Width	Weight
		Meters	Meters	kgs
AS-KSC	Kwikstage Scaffold Cage	0.9	0.9	65





**SCAFFOLDING**  
— BY APAC GROUP —

# CUPLOCK SYSTEM

Australia Only

---

## [ ADDRESS ]

388 Dongwu South Rd.,  
Suzhou City, R.P China  
215168

---

## [ Phone ]

+86 512 6670 0084

---

## [ EMAIL ]

info@apacscaffold.com

---

## [ WEB ]

www.apacscaffold.com

