



# KWIKSTAGE SYSTEM PRODUCT CATALOG

[WWW.APACSCAFFOLD.COM](http://WWW.APACSCAFFOLD.COM)

 **SCAFFOLDING**  
— BY APAC GROUP —

# TABLE OF CONTENTS

<b>ABOUT APAC</b>	<b>02</b>
<b>OVERVIEW</b>	<b>03-05</b>
<b>COMPONENTS</b>	<b>06-31</b>



Kwikstage Standard	06
Kwikstage Ledger	07
Kwikstage Transom	08
Kwikstage Diagonal Brace	09
Kwikstage Tie Bar	10
Kwikstage Hop up Bracket	11
Kwikstage Steel Planks	12
Kwikstage Lapping Plate	13
Kwikstage Mesh Guard	14
Ladder Access Transom	15
Kwikstage Ledger Transoms	16
Kwikstage Aluminum Stair	17
Kwikstage Stair Handrails	18
Aluminum Stretcher Stair	19
Solid Base Jack	20
Swivel Base Jack	21
Kwikstage U Head Jack	22
End Toe Board Bracket	23
Toe Board Bracket	24
Double C Clips	25
Kwikstage Gaurdrail Post	26
LVL Scaffold Planks	27
Fire Retardant Containment Mesh	28
Chain Wire & Scaffmesh	29
Scaffold Rack	30
Scaffold Cage	31

# ABOUT

## APAC SCAFFOLD



Founded in 2004, APAC scaffold specializes in supplying of system scaffolding & falseworks.

The company has always strived to set and maintain the very highest of standard in safety and the supply of the highest quality formwork and scaffolding components.

Our key products: Ringlock scaffolding system, Cuplock scaffolding system, Aluminum scaffolding system, Shoring props and Formwork Products. Focus on the technical development and to meet the needs of our customers we adopt a lot of new technology and inspirational ideas to our products.

Our scaffoldings which are widely used in residential, shipbuilding, mining, insulation, oil & petroleum, airports, bridges etc.

# OVERVIEW

## APAC'S Capabilities

### [ EXPERTISE ]

Between most our team members we have decades of experience in the industry. Many sales are mechanical background, can better understand the customer's project needs, in our view, this is very important in international trade, is conducive to less customer communication costs.

In dealing with us, you have the benefit of dealing with an experienced, professional, and motivated team who's committed to attention to detail, working to a budget, a timeline and qualified products.

### [ PRODUCTIVITY ]

APAC Scaffold is a professional construction material supplier, producing various equipment for construction industry, such as Aluminium scaffolding, ringlock scaffolding, cuplock scaffolding, shoring prop, and related accessories.

We operate professional production workshops and equipment, including punching machines, welding machines, pipe cutting machines, shearing machines, bending machines, screw machines etc. After years of hard work, we can produce up to 30,000 tons of equipments annually and our products are sold in many countries.

### [ QUALITY ASSURANCE ]

We have established a quality assurance department to make sure that our products meet customer requirements. Based on the ISO9001 Quality Management System, our professional team strictly examines every procedure, from supplier verification to examination of raw materials, production, and finished products, to ensure the high quality of products.

We fully understand the scaffolding standard such as EN12811, EN12810, AS/NZS1576.2, ANSI/SSFI SC100-5/05, NCH2501, GOST 27321-2018 and GOST 24258-88 for different countries.

# OVERVIEW

## Product Traceability

All APAC scaffold componets are stamped with traceability marks.

### KEY |

**Batch Number : APACYYXXXX**

**APAC= APAC Scaffold**

**YY= Year of Manufacture**

**XXXX= Order Number**

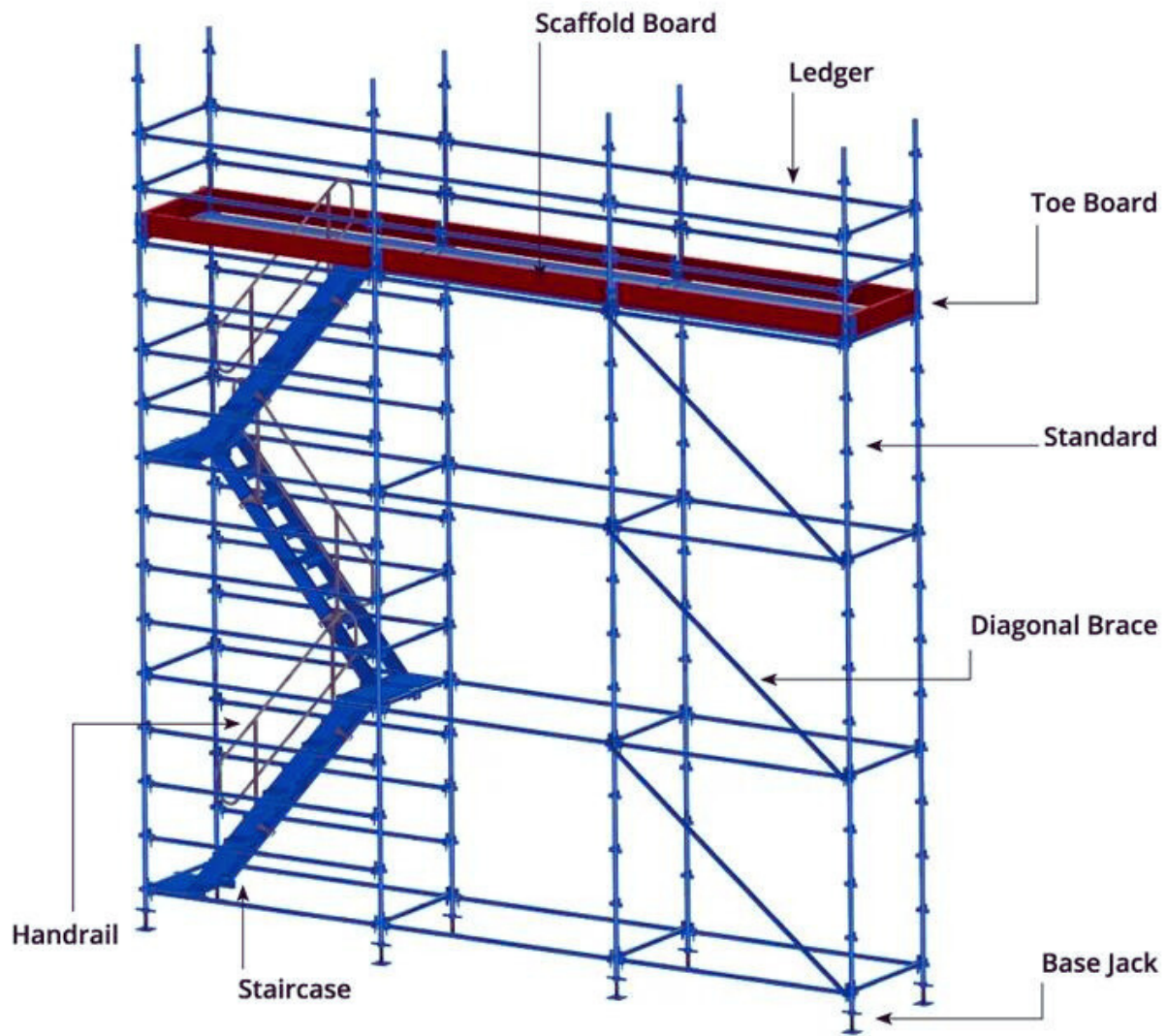


# OVERVIEW

## Components

### Component Identification

The diagram below shows the most common Kwikstage components used. Most scaffolding structures are made from these basic components, however, the Kwikstage system comes with a variety of accessories to meet all your scaffolding requirements.



# KWIKSTAGE

## Kwikstage Standard

Kwikstage Standard (Vertical) has (V) pressings in clusters at 495 mm centres, Tube size: OD48.3x4.0mm, Steel Grade:S235 or Tube size: OD48.3x3.5mm, Steel Grade:S355. Surface treatment: Baking paint or Hot dip galvanized.



Item No.	Description	Height	Weight	Packaging	
		Meters	kg	Qty.	Type
AS-KS03	0.3m Kwikstage Standard w/spigot	0.3	2.45	300	Rack
AS-KW05	0.5m Kwikstage Standard w/spigot	0.5	3.20	200	Rack
AS-KW10	1.0m Kwikstage Standard w/spigot	1.0	5.75	100	Rack
AS-KS15	1.5m Kwikstage Standard w/spigot	1.5	8.30	100	Rack
AS-KS20	2.0m Kwikstage Standard w/spigot	2.0	10.9	100	Rack
AS-KS25	2.5m Kwikstage Standard w/spigot	2.5	13.4	100	Rack
AS-KS30	3.0m Kwikstage Standard w/spigot	3.0	16.0	100	Rack

# KWIKSTAGE

## Kwikstage Ledger

Kwikstage Ledgers is horizontal member of the scaffold system also known as guard rails. Tube size: OD48.3x3.2mm, Steel Grade:S235. Ledgers fit into the upper (V) Pressings on the standards.



Item No.	Description	Length	Weight	Packaging	
		Meters	kgs	Qty.	Type
AS-KL056	0.5m Kwikstage Ledger	0.56	2.25	300	Rack
AS-KL076	0.7m Kwikstage Ledger	0.76	3.15	300	Rack
AS-KL081	0.8m Kwikstage Ledger	0.81	3.53	300	Rack
AS-KL127	1.2m Kwikstage Ledger	1.27	5.00	150	Rack
AS-KL183	1.8m Kwikstage Ledger	1.83	6.70	150	Rack
AS-KL244	2.4m Kwikstage Ledger	2.44	8.53	150	Rack



# KWIKSTAGE

## Kwikstage Transom

Kwikstage Transoms are made by welding two 5.00 mm angles back to back. Transoms fit into the lower (V) pressings on the standards to carry steel boards which make a safe working platform.



Item No.	Description	Length	Weight	Packaging	
		Meters	kgs	Qty.	Type
AS-KT056	0.5m Transom	0.56	4.5	150	Rack
AS-KT076	0.7m Transom	0.76	5.4	150	Rack
AS-KT081	0.8m Transom	0.81	5.6	150	Rack
AS-KT127	1.2m Transom	1.27	9.3	75	Rack
AS-KT183	1.8m Transom	1.83	16.4	75	Rack
AS-KT244	2.4m Transom	2.44	23.2	75	Rack

# KWIKSTAGE

## Kwikstage Diagonal Brace

Diagonal Braces provides strength and stability to the scaffold. They fit diagonally across the scaffold bay. They can be used for handrail to stretcher stairs.



Item No.	Description	Length	Weight	Packaging	
		Meters	kgs	Qty.	Type
AS-KDB170	1.7m Diagonal Brace	1.7	7.0	100	Rack
AS-KDB210	2.1m Diagonal Brace	2.1	8.0	100	Rack
AS-KDB270	2.7m Diagonal Brace	2.7	10.5	100	Rack
AS-KDB320	3.2m Diagonal Brace	3.2	11.7	100	Rack
AS-KDB360	3.6m Diagonal Brace	3.6	12.7	100	Rack

# KWIKSTAGE

## Kwikstage Tie Bar

Tie bars have pins at each ends which fit in holes of 2 and 3 board stage brackets (hopups) to prevent the brackets from spreading and the planks from becoming dislodged.



Item No.	Description	Length	Weight	Packaging	
		Meters	kgs	Qty.	Type
AS-KTB056	0.5m Tie Bar	0.56	1.4	300	Rack
AS-KTB076	0.7m Tie Bar	0.76	1.9	300	Rack
AS-KTB127	1.2m Tie Bar	1.27	3.0	150	Rack
AS-KTB183	1.8m Tie Bar	1.83	4.5	150	Rack
AS-KTB244	2.4m Tie Bar	2.44	5.8	150	Rack

# KWIKSTAGE

## Kwikstage Hop up Bracket

Board Stage Brackets / hopups fit into the (V) pressing of the standard which is nearest to the wall. The 2 & 3 BSB have holes into which tie bar pins are attached. They are used to provide cantilevered platform on the inside of the scaffold nearest the wall.

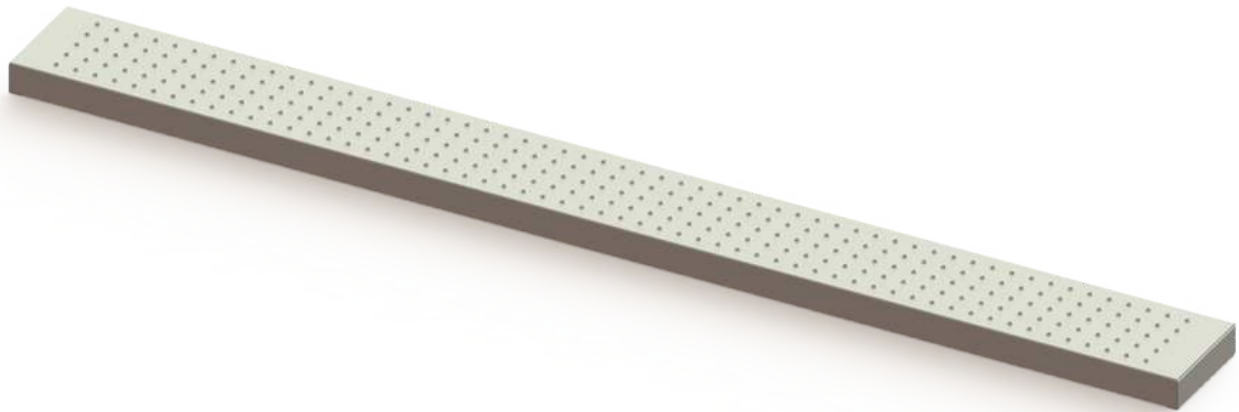


Item No.	Description	Length	Weight	Packaging	
		Meters	kgs	Qty.	Type
AS-KHUB1	1 Board Hop up Bracket	0.28	2.3	200	Rack
AS-KHUB2	2 Boards Hop up Bracket	0.53	6.3	40	Rack
AS-KHUB3	3 Boards Hop up Bracket	0.78	11.1	40	Rack

# KWIKSTAGE

## Kwikstage Steel Planks

Steel Planks are manufactured from Pre Galvanised steel sheet pressed to a hollow shape 60 mm High x 230mm wide. Steel Planks are strong, durable and light in weight. They fit neatly sit on the (V) section of 2 transoms. giving a non slip surface and a working deck.



Item No.	Description	Length	Weight	Packaging	
		Meters	kgs	Qty.	Type
AS-KSP076	0.7m Steel Plank	0.76	5	100	Rack
AS-KSP127	1.2m Steel Plank	1.27	8	50	Rack
AS-KSP183	1.8m Steel Plank	1.83	12	50	Rack
AS-KSP244	2.4m Steel Plank	2.44	15	50	Rack

## Lapping Plate

Steel lapping plates have a folded returned to lock in between steel boards. Lap plates / panels fills the gaps minimising trip hazard and deck weight variances.

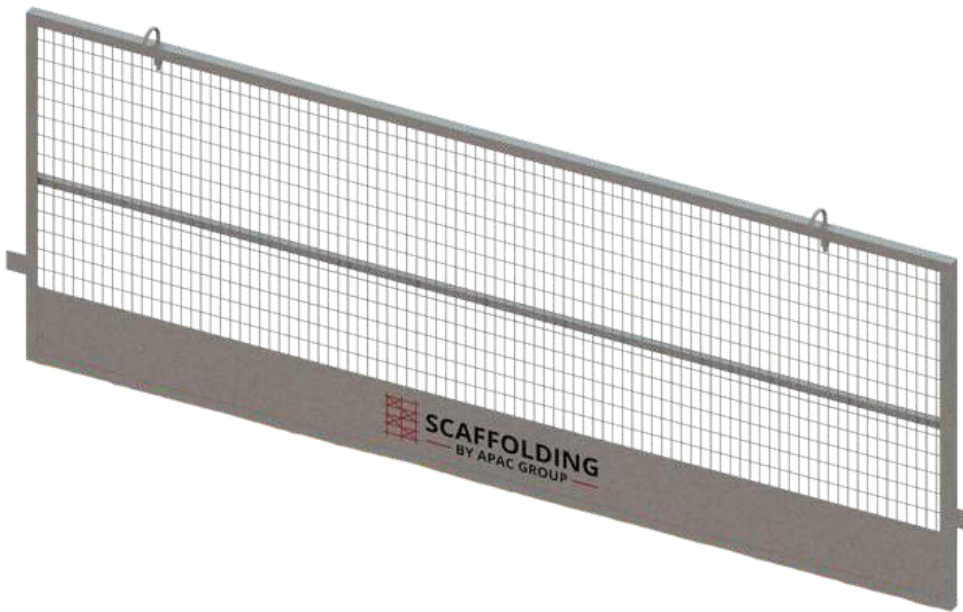


Item No.	Description	Length	Length	Weight	Packaging	
		Meters	Width	kgs	Qty.	Type
AS-KLP1	1 Board Lapping Plate	0.7	0.23	4.2	450	Rack
AS-KLP2	2 Boards Lapping Plate	0.7	0.46	9.4	300	Rack
AS-KLP3	3 Boards Lapping Plate	0.7	0.68	13.7	225	Rack

# KWIKSTAGE

## Mesh Guard

Kwikstage Mesh Guard is a safety component used in conjunction with Kwikstage system scaffolding. Kwikstage mesh guard reduced the risk of materials and small parts falling from the scaffolding structure.



Item No.	Description	Length	Weight	Packaging	
		Meters	kgs	Qty.	Type
AS-KMG127	Kwikstage Mesh Guard 1.27m	1.29	12.8	35	Rack
AS-KMG183	Kwikstage Mesh Guard 1.83m	1.85	17.6	35	Rack
AS-KMG244	Kwikstage Mesh Guard 2.44m	2.46	22.6	30	Rack

# KWIKSTAGE

## Ladder Access Transom

Transom component used for insertion into scaffold bay. Allows installation of a ladder opening within the scaffold deck.



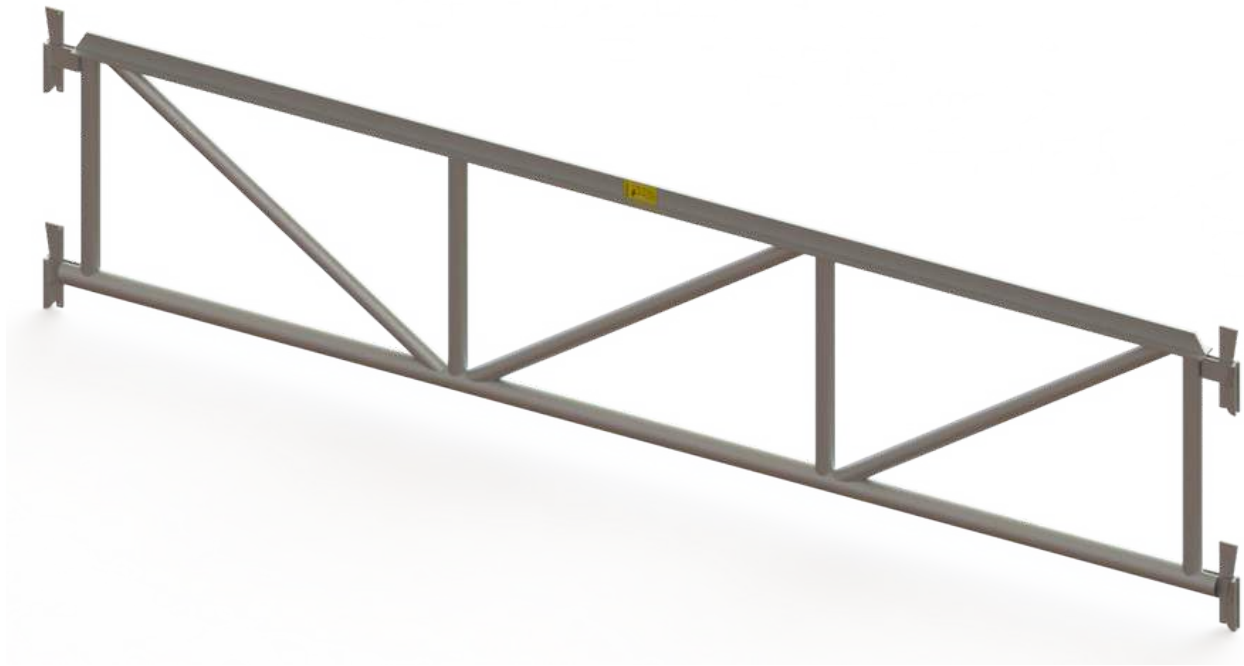
Item No.	Description	Length	Weight	Packaging	
		Meters	kgs	Qty.	Type
AS-KLAT076	0.7m Ladder Access Transom	0.76	5.3	200	Rack
AS-KLAT127	1.2m Ladder Access Transom	1.27	11.27	100	Rack
AS-KLAT183	1.8m Ladder Access Transom	1.83	16.86	100	Rack
AS-KLAT244	2.4m Ladder Access Transom	2.44	22.06	100	Rack



# KWIKSTAGE

## Kwikstage Ledger Transoms

Heavy duty back to back angle transoms for location of scaffold boards. These are used to where greater loads are required for pedestrian access.



Item No.	Description	Length	Weight	Packaging	
		Meters	kgs	Qty.	Type
AS-KLT127	1.2m Kwikstage Ledger Transoms	1.27	19	15	Rack
AS-KLT183	1.8m Kwikstage Ledger Transoms	1.83	32	15	Rack
AS-KLT244	2.4m Kwikstage Ledger Transoms	2.44	42	15	Rack

# KWIKSTAGE

## Aluminum Stair

These Aluminium stairs are designed specifically for use with the steel kwikstage modular scaffolding system.

They are pre-fabricated and designed to fit in a 1.2m x 2.4m bay, the stairs are 585mm wide with a rise of 230mm.

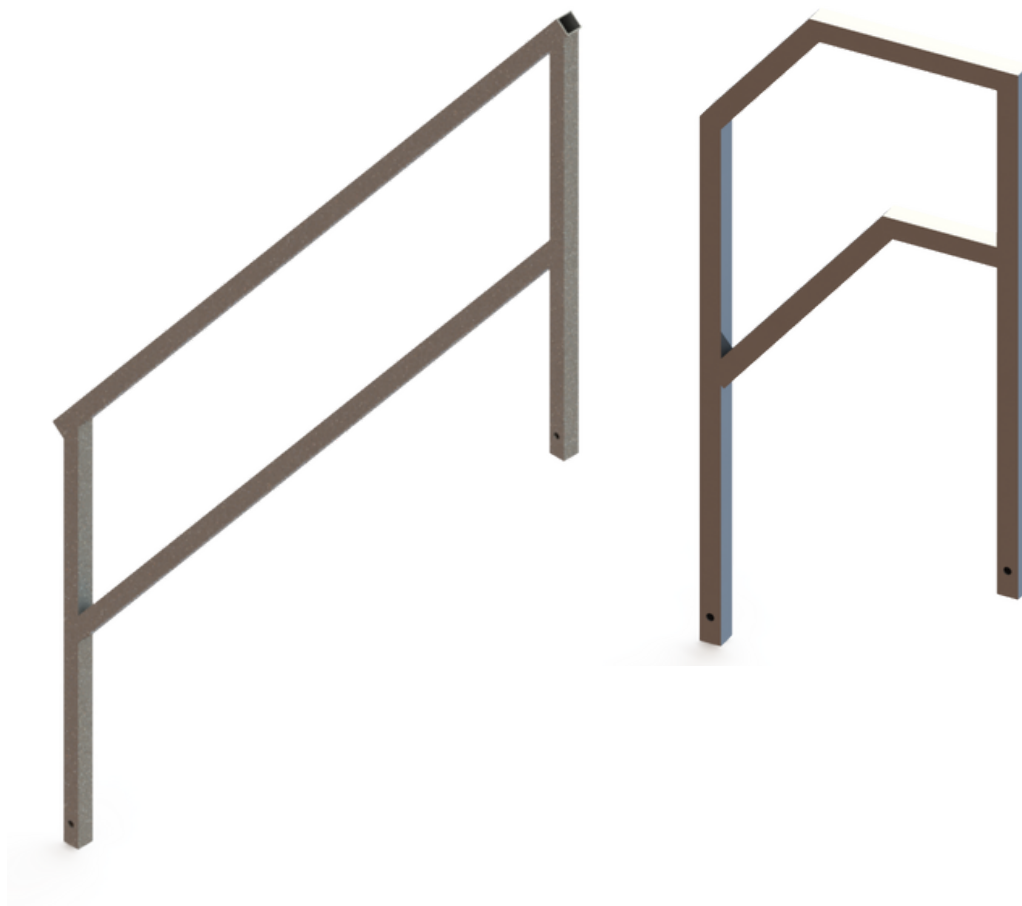


Item No.	Description	Length	Weight	Packaging	
		Meters	kgs	Qty.	Type
AS-KAS10	1.0m Rise Aluminium Stair	2.44	20	24	Rack
AS-KAS15	1.5m Rise Aluminium Stair	2.44	35	24	Rack
AS-KAS20	2.0m Rise Aluminium Stair	2.44	37	24	Rack

# KWIKSTAGE

## Stair Handrails

The stair handrails are used to provide handrails on the inner side and outer side of the Aluminium Stair Platforms.



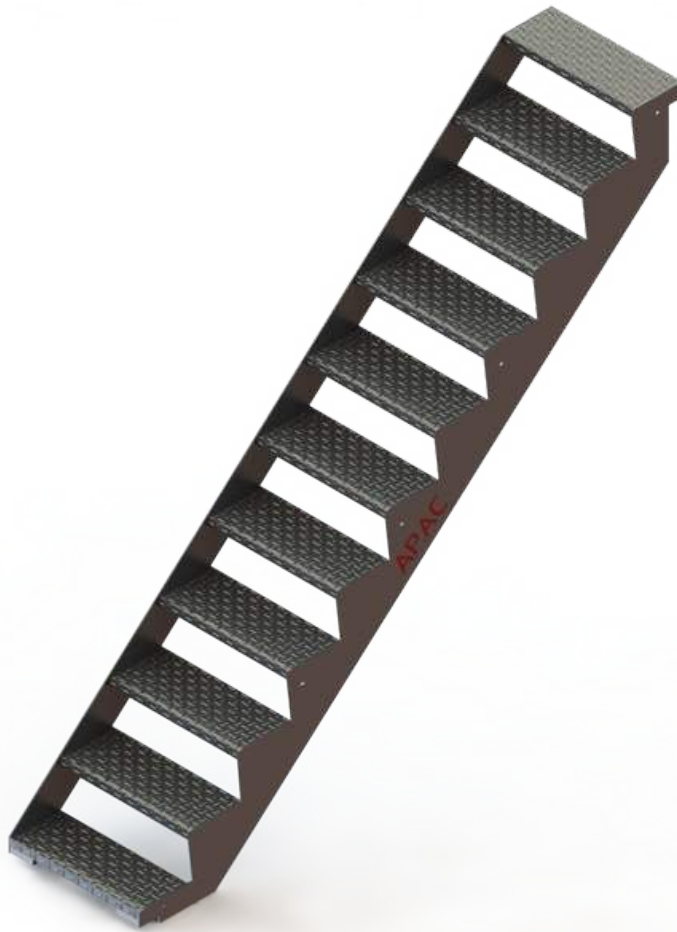
Item No.	Description	Length	Weight	Packaging	
		Meters	kgs	Qty.	Type
AS-KSIH	Intermediate Handrail	1.2	7.5	30	Rack
AS-KSEH	Exit Handrail	0.5	4.5	30	Rack

# KWIKSTAGE

## Aluminum Stretcher Stair

The aluminum stretcher stairs are pre-fabricated and designed to fit in a 1.2m x 2.4m bay with a 1.0m or 2.0m rise (lift).

The stairs are 585mm wide with a rise of 230mm. Two stairs will fit perfectly side by side on a 1.2m bay.



Item No.	Description	Length	Weight	Packaging	
		Meters	kgs	Qty.	Type
AS-KASS1	1.0m Rise Aluminium Stretcher Stair	2.44	20	60	Rack
AS-KASS2	2.0m Rise Aluminium Stretcher Stair	2.44	36	60	Rack

# KWIKSTAGE

## Solid Base Jack

Ringlock adjustable base jack is used for leveling the scaffold-standards at the same height. OD: 34mm. Surface treatment: Hot dip galvanized or Electroplated.



Item No.	Description	Length	Weight	Packaging	
		Meters	kgs	Qty.	Type
AS-KSBJ	Solid Base Jack	0.65	6.5	500	Rack

# KWIKSTAGE

## Swivel Base Jack

Swivel Jack provides stability for uneven surfaces. The jacks has 180 degree rotation for extra flexibility. Made from heavy duty steel and galvanized to last longer.



Item No.	Description	Length	Weight	Packaging	
		Meters	kgs	Qty.	Type
AS-KSBJ	Swivel Base Jack	0.65	7	500	Rack

# KWIKSTAGE

## Scaffold U Head Jack

U shaped head to support a standard or vertical pole over a scaffold standard. It is attached to a solid thread rod, which is 500mm long and 34 mm OD.



Item No.	Description	Length	Weight	Packaging	
		Meters	kgs	Qty.	Type
AS-KUHJ	Kwikstage U Head Jack	0.65	9	500	Rack

## End Toe Board Bracket

End Toe Board brackets also called toe board Clips are fabricated brackets placed on the outside of a scaffold standard to allow toe boards to be installed .



Item No.	Description	Length	Weight	Packaging	
		Meters	kgs	Qty.	Type
AS-KETBB	End Toe Board Bracket	/	1	1000	Cage



## Toe Board Bracket

Toe board brackets also known as toe board clips are Clamped to the standard with a captive wedge to hold the batten toe board vertically in place.

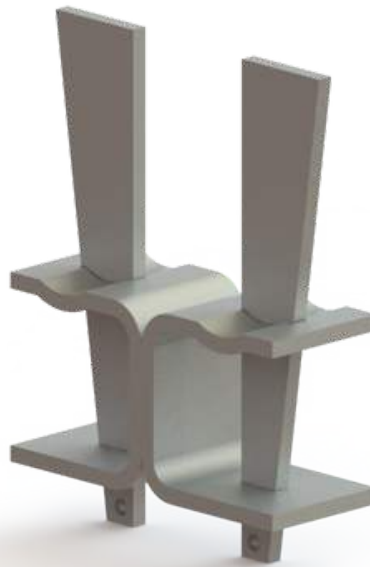


Item No.	Description	Length	Weight	Packaging	
		Meters	kgs	Qty.	Type
AS-KTBB	Toe Board Bracket	/	0.85	1000	Cage

# KWIKSTAGE

## Double C Clips

Used to Join Kwikstage scaffolding Standards Back to Back for more stability and strength to the scaffold structure.



Item No.	Description	Length	Weight	Packaging	
		Meters	kgs	Qty.	Type
AS-KDCC	Kwikstage Double C Clips	0.3	1.5	1000	Cage

# KWIKSTAGE

## Gaurdrail Post

Used for edge protection slabs or balconies. Bolted into concrete with 14mm Dyna Bolts.  
ÊCompatible with all sizes of ledgers which makes it very versatile.



Item No.	Description	Length	Weight	Packaging	
		Meters	kgs	Qty.	Type
AS-KGP120	Kwikstage Guardrail Post	1.2	10	150	Rack

# KWIKSTAGE

## LVL Scaffold Planks

LVL Scaffold planks are Structural laminated veneer lumber and designed to be used as a non-modular scaffold plank as a part of a working platform in accordance with the requirements of AS/NZS 1576.1 and AS/NZS 1577.



Item No.	Description	Length	Weight	Packaging	
		Meters	kgs	Qty.	Type
AS-KLSP120	1.2m LVL Scaffold Plank	1.2	6.7	75	Rack
AS-KLSP150	1.5m LVL Scaffold Plank	1.5	8.4	75	Rack
AS-KLSP180	1.8m LVL Scaffold Plank	1.8	10.0	75	Rack
AS-KLSP240	2.4m LVL Scaffold Plank	2.4	13.4	75	Rack
AS-KLSP300	3.0m LVL Scaffold Plank	3.0	16.8	75	Rack
AS-KLSP360	3.6m LVL Scaffold Plank	3.6	20.1	75	Rack
AS-KLSP480	4.8m LVL Scaffold Plank	4.8	26.9	75	Rack

## Fire Retardant Containment Mesh

The fire retardant containment mesh is a specially designed system that effectively encloses scaffolding from the inside, ensuring the safety of workers at height.



Item No.	Description	Length	Weight	Packaging	
		Meters	kgs	Qty.	Type
AS-KFRM1	1.95m x 10m FR Containment Mesh	1.95	15.6	8	Bundle
AS-KFRM2	0.95m x 10m FR Containment Mesh	0.95	7.6	16	Bundle

# KWIKSTAGE

## Chain Wire & Scaffmesh

This chain wire & scaffmesh consists of a combination of hot-dip galvanized chain link wire and scaffolding mesh for use on scaffolding edges to prevent debris from falling.



Item No.	Description	Length	Weight	Packaging	
		Meters	kgs	Qty.	Type
AS-KCWS10	1.8m x 10m Chain Wire and Scaffmesh	10	20	60	Rack
AS-KCWS15	1.8m x 15m Chain Wire and Scaffmesh	15	31	60	Rack

# KWIKSTAGE

## Scaffold Rack

A steel structure built to hold goods in a stable fashion while being lifted by a forklift to stock, stack-up and transport.

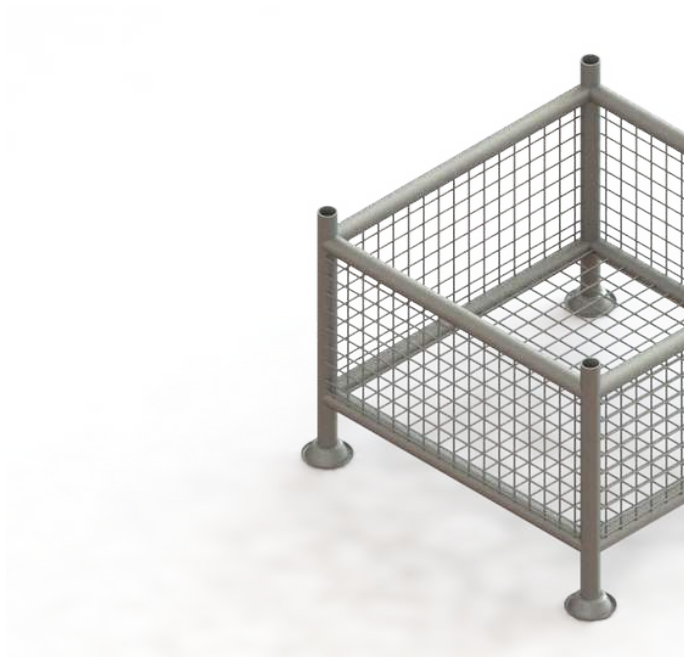


Item No.	Description	Length	Width	Weight
		Meters	Meters	kgs
AS-KSR	Kwikstage Scaffold Rack	0.9	0.9	35

# KWIKSTAGE

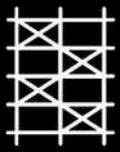
## Scaffold Cage

A steel structure built to hold goods in a stable fashion while being lifted by a forklift to stock, stack-up and transport.



Item No.	Description	Length	Width	Weight
		Meters	Meters	kgs
AS-KSC	Kwikstage Scaffold Cage	0.9	0.9	65





**SCAFFOLDING**  
— BY APAC GROUP —

# KWIKSTAG SYSTEM

---

**[ ADDRESS ]**

388 Dongwu South Rd.,  
Suzhou City, R.P China  
215168

---

**[ Phone ]**

+86 512 6670 0084

---

**[ EMAIL ]**

info@apacscaffold.com

---

**[ WEB ]**

www.apacscaffold.com

