



RINGLOCK SYSTEM PRODUCT CATALOG

U.K, AUSTRALIA AND NEW ZEALAND

www.apacscaffold.com



SCAFFOLDING
— BY APAC GROUP —

TABLE OF CONTENTS

INTRODUCTION

02

OVERVIEW

03-05

Ringlock

06-50

Ringlock Standard	06
Ledger O-Type	07
Transom U-type	08
Reinforced Ledger U-Type	09
Bridging Ledger O-Type	10
Bridging Ledger U-Type	11
MID Transom O-Type	12
Ledger to Plank Transom O-Type	13
Plank to Plank Transom O-Type	14
Bay Brace 2.0m Lift	15
Steel Plank O-Type 320mm	16
Steel Plank O-Type 190mm	17
Steel Plank U-Type 320mm	18
Steel Plank U-Type 190mm	19
Aluminum Plywood Access Decks 2.0m Lift O-type	20
Aluminum Access Decks 2.0m Lift O-type	21
Side/Hop-up Bracket O-Type	22
Side/Hop-up Bracket U-Type	23
Steel Toe Board-Bolted Type	24
Steel Toe Board-Hook Type	25
Wooden Toe Board	26
Starter/ Base Collar	27
Adjustable Base Jack	28
Swivel Base Jack	29
Adjustable Caster Adapert	30
Caster Wheel	31
U Head	32
Ringlock Lattice Beam	33
Guardrail Standard	34
Safety Gate	35
Steel Platform Stair 2.0m Lift O-Type	36
Aluminum Platform Stair 2.0m Lift O-Type	37
Platform Stairs Guardrails	38
Monkey Ladder	39
Ladder and Ladder Bracket	40
Ringlock Spigot Adapter Clamp	41
Right Angle Adapter Clamp	42
Wedge Head Swivel Coupler	43
Wedge Head Coupler	44
Rosette Clamp	45
Right Angle Clamp	46
Swivel Clamp	47
Scaffold Rack	48
Scaffold High Rack	49
Scaffold Cage Insert	50

ABOUT

APAC SCAFFOLD



Founded in 2004, APAC scaffold specializes in supplying of system scaffolding & falseworks.

The company has always strived to set and maintain the very highest of standard in safety and the supply of the highest quality formwork and scaffolding components.

Our key products: Ringlock scaffolding system, Cuplock scaffolding system, Aluminum scaffolding system, Shoring props and Formwork Products. Focus on the technical development and to meet the needs of our customers we adopt a lot of new technology and inspirational ideas to our products.

Our scaffoldings which are widely used in residential, shipbuilding, mining, insulation, oil & petroleum, airports, bridges etc.

OVERVIEW

APAC'S Capabilities

[EXPERTISE]

Between most our team members we have decades of experience in the industry. Many sales are mechanical background, can better understand the customer's project needs, in our view, this is very important in international trade, is conducive to less customer communication costs.

In dealing with us, you have the benefit of dealing with an experienced, professional, and motivated team who's committed to attention to detail, working to a budget, a timeline and qualified products.

[PRODUCTIVITY]

APAC Scaffold is a professional construction material supplier, producing various equipment for construction industry, such as Aluminium scaffolding, ringlock scaffolding, cuplock scaffolding, shoring prop, and related accessories.

We operate professional production workshops and equipment, including punching machines, welding machines, pipe cutting machines, shearing machines, bending machines, screw machines etc. After years of hard work, we can produce up to 30,000 tons of equipments annually and our products are sold in many countries.

[QUALITY ASSURANCE]

We have established a quality assurance department to make sure that our products meet customer requirements. Based on the ISO9001 Quality Management System, our professional team strictly examines every procedure, from supplier verification to examination of raw materials, production, and finished products, to ensure the high quality of products.

We fully understand the scaffolding standard such as EN12811, EN12810, AS/NZS1576.2, ANSI/SSFI SC100-5/05, NCH2501, GOST 27321-2018 and GOST 24258-88 for different countries.

OVERVIEW

Product Traceability

All APAC scaffold componets are stamped with traceability marks.

KEY |

Batch Number : APACYYXXXX

APAC= APAC Scaffold

YY= Year of Manufacture

XXXX= Order Number

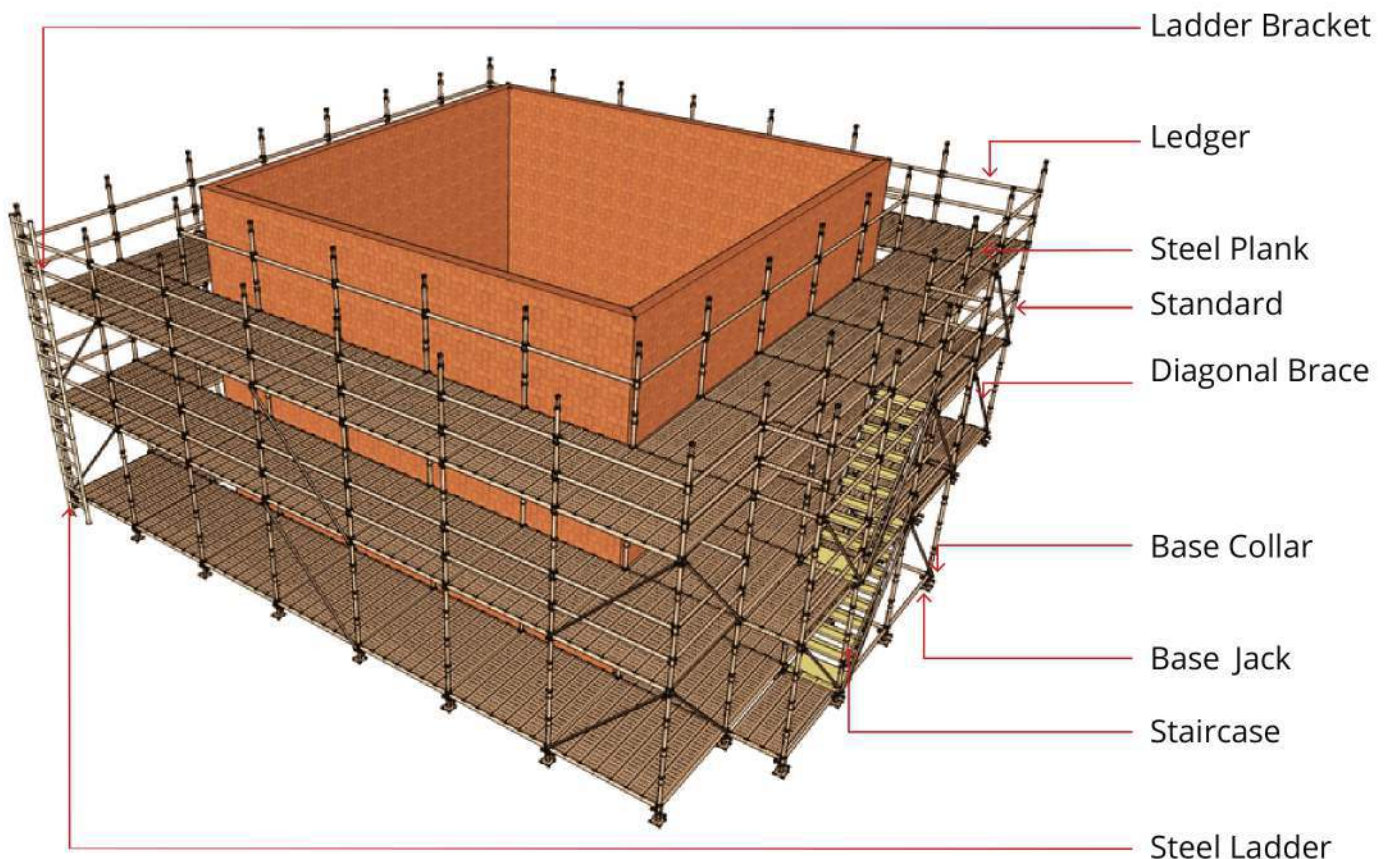


OVERVIEW

Components

Component Identification

The diagram below shows the most common Ringlock components used. Most scaffolding structures are made from these basic components, however, the Ringlock system comes with a variety of accessories to meet all your scaffolding requirements.



The above illustration highlights APAC Scaffold's access solutions. APAC Scaffold offers the following access solutions:

- Ringlock Steel Stair Tower
- Aluminium Platform Stairs
- Internal Steel or Aluminium Ladders used with Swing Gates, Plank-To-Plank Transoms, Ledger-To-Plank Transoms or Ladder Access Transoms.

RINGLOCK

Ringlock Standard

Ringlock Standard (Vertical) has rosettes at 500mm interval, Tube size: OD48.3x3.2mm, Steel Grade:S235 or S355. Surface treatment: Hot dip galvanized.



Item No.	Description	Height	Weight		Packaging	
		Meters	kgs	Lbs	Qty.	Type
AS-RS40	8 Ring Standard 4.0M w/ spigot	4.0	19.2	42.24	100	Rack
AS-RS30	6 Ring Standard 3.0M w/ spigot	3.0	14.5	31.90	100	Rack
AS-RS25	5 Ring Standard 2.5M w/ spigot	2.5	12.3	27.06	100	Rack
AS-RS20	4 Ring Standard 2.0M w/ spigot	2.0	9.8	21.56	100	Rack
AS-RS15	3 Ring Standard 1.5M w/ spigot	1.5	7.5	16.50	100	Rack
AS-RS10	2 Ring Standard 1.0M w/ spigot	1.0	5.2	11.44	100	Rack
AS-RS05	1 Ring Standard 0.5M w/ spigot	0.5	2.9	6.38	200	Rack

RINGLOCK

Ringlock Ledger

[Ledger O-Type]

Ringlock Ledger, Tube size: OD48.3x3.2mm, Steel Grade:S235 or S355. Surface treatment: Hot dip galvanized.



Item No.	Description	Length	Weight		Packaging	
		Meters	kgs	Lbs	Qty.	Type
AS-RL042	0.42M O-Ledger	0.42	2.10	4.62	150	Rack
AS-RL073	0.73M O-Ledger	0.73	3.20	7.04	150	Rack
AS-RL109	1.09M O-Ledger	1.09	4.30	9.46	150	Rack
AS-RL140	1.40M O-Ledger	1.40	5.60	12.32	150	Rack
AS-RL157	1.57M O-Ledger	1.57	6.20	13.64	150	Rack
AS-RL207	2.07M O-Ledger	2.07	7.90	17.38	150	Rack
AS-RL257	2.57M O-Ledger	2.57	9.70	21.34	150	Rack
AS-RL307	3.07M O-Ledger	3.07	11.50	25.30	150	Rack
AS-RL414	4.14M O-Ledger	4.14	15.30	33.66	150	Rack

RINGLOCK

Ringlock Transom

[Transom U-Type]

Ringlock U Transom, Size:53x48x2.5mm,Steel Grade: S235 or S355. Surface treatment: Hot dip galvanized.



Item No.	Description	Length	Weight	Packaging	
		Meters	kgs	Qty.	Type
AS-RTU042	0.42M U-Ledger	0.42	2.10	300	Rack
AS-RTU045	0.45M U-Ledger	0.45	2.20	300	Rack
AS-RTU073	0.73M U-Ledger	0.73	3.20	300	Rack
AS-RTU109	1.09M U-Ledger	1.09	4.50	300	Rack
AS-RTU140	1.40M U-Ledger	1.40	5.60	300	Rack
AS-RTU157	1.57M U-Ledger	1.57	6.10	300	Rack
AS-RTU207	2.07M U-Ledger	2.07	7.90	300	Rack

RINGLOCK

Ringlock Reinforced Ledger

[Reinforced Ledger U-Type]

The Reinforced Ledger is engineered to enable higher service loads to the working platform. Steel Grade: S235 or S355. Surface treatment: Hot dip galvanized.



Item No.	Description	Length	Weight	Packaging	
		Meters	kgs	Qty.	Type
AS-RRH109	1.09M U-Reinforced Ledger	1.09	6.8	150	Rack
AS-RRH140	1.40M U-Reinforced Ledger	1.40	7.7	150	Rack
AS-RRH157	1.57M U-Reinforced Ledger	1.57	8.6	150	Rack
AS-RRH207	2.07M U-Reinforced Ledger	2.07	11.3	150	Rack
AS-RRH257	2.57M U-Reinforced Ledger	2.57	14.0	150	Rack
AS-RRH307	3.07M U-Reinforced Ledger	3.07	16.6	150	Rack

RINGLOCK

Ringlock Bridging Ledger O-Type

[Bridging Ledger O-Type]

The Bridging Ledger is engineered to enable higher service loads to the working platform. Tube size: OD48.3x3.2mm, Steel Grade:S235 or S355. Surface treatment: Hot dip galvanized.



Item No.	Description	Length	Weight	Packaging	
		Meters	kgs	Qty.	Type
AS-RBL157	1.57M O-Bridging Ledger	1.57	9.5	60	Rack
AS-RBL207	2.07M O-Bridging Ledger	2.07	12.5	60	Rack
AS-RBL257	2.57M O-Bridging Ledger	2.57	15.5	60	Rack
AS-RBL307	3.07M O-Bridging Ledger	3.07	18.5	60	Rack

RINGLOCK

Ringlock Bridging Ledger U-Type

[Bridging Ledger U-Type]

The Bridging Ledger is engineering to enable higher service loads to the working platform. Steel Grade:S235 or S355. Surface treatment: Hot dip galvanized.



Item No.	Description	Length	Weight	Packaging	
		Meters	kgs	Qty.	Type
AS-RBLU157	1.57M U-Bridging Ledger	1.57	9.9	60	Rack
AS-RBLU207	2.07M U-Bridging Ledger	2.07	13.1	60	Rack
AS-RBLU257	2.57M U-Bridging Ledger	2.57	15.9	60	Rack
AS-RBLU307	3.07M U-Bridging Ledger	3.07	19.1	60	Rack

RINGLOCK

Ringlock MID Transom

[MID Transom O-Type]

The Mid Transom is designed to create a transom at the plank level anywhere inside of a bay by straddling the outer Ledgers / Transoms of a bay. Tube size: OD48.3x3.2mm, Steel Grade: S235 or S355. Surface treatment: Hot dip galvanized.



Item No.	Description	Length	Weight	Packaging	
		Meters	kgs	Qty.	Type
AS-RMT073	0.73M Mid Transom	0.73	3.9	320	Rack
AS-RMT109	1.09M Mid Transom	1.09	5.2	160	Rack
AS-RMT140	1.40M Mid Transom	1.40	6.2	160	Rack
AS-RMT157	1.57M Mid Transom	1.57	6.8	160	Rack
AS-RMT207	2.07M Mid Transom	2.07	8.5	160	Rack
AS-RMT257	2.57M Mid Transom	2.57	10.2	160	Rack
AS-RMT307	3.07M Mid Transom	3.07	12.1	160	Rack

RINGLOCK

Ringlock Ledger to Plank Transom

[Ledger to Plank Transom O-Type]

The Ledger to Plank Transom is used where ladder access opening is required on one side of the access platfor, or infill a gap in the platform. Tube size: OD48.3x3.2mm, Steel Grade: S235 or S355. Surface treatment: Hot dip galvanized.



Item No.	Description	Length	Weight	Packaging	
		Meters	kgs	Qty.	Type
AS-RLPT0010	1 board Transom Ledger to Plank	0.32	3.40	200	Rack+Insert
AS-RLPT0107	2 board Transom Ledger to Plank	0.64	4.20	200	Rack+Insert
AS-RLPT0204	3 board Transom Ledger to Plank	0.96	5.00	200	Rack+Insert

RINGLOCK

Ringlock Plank to Plank Transom

[Plank to Plank Transom O-Type]

The Plank to Plank Transom is used where ladder access opening is required on one side of the access platform, or infill a gap in the platform. Tube size: OD48.3x3.2mm, Steel Grade: S235 or S355. Surface treatment: Hot dip galvanized.



Item No.	Description	Length	Weight	Packaging	
		Meters	kgs	Qty.	Type
AS-RPPT032	1 board Plank to Plank Transom	0.32	3.70	170	Rack+Insert
AS-RPPT070	2 board Plank to Plank Transom	0.70	4.60	170	Rack+Insert
AS-RPPT109	3 board Plank to Plank Transom	1.09	5.50	170	Rack+Insert

RINGLOCK

Ringlock Diagonal Brace

[Bay Brace 2.0m Lift]

The Diagonal Brace is used for the lateral bracing of Ringlock sca olds. Tube size: OD48.3x2.5mm, Steel Grade: S235 or S355. Surface treatment: Hot dip galvanized.



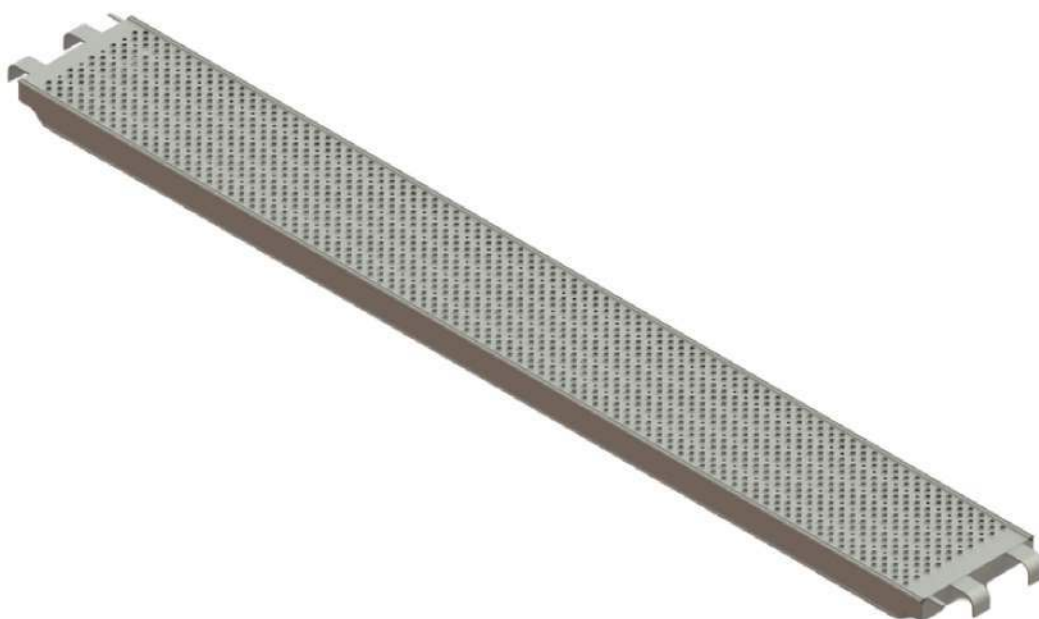
Item No.	Description	Length	Weight	Packaging	
		Meters	kgs	Qty.	Type
AS-RDB073	0.73M x 2M Diagonal Brace	0.73	7.8	300	Rack
AS-RDB109	1.09M x 2M Diagonal Brace	1.09	8.2	300	Rack
AS-RDB140	1.40M x 2M Diagonal Brace	1.40	8.7	150	Rack
AS-RDB157	1.57M x 2M Diagonal Brace	1.57	8.9	150	Rack
AS-RDB207	2.07M x 2M Diagonal Brace	2.07	9.9	150	Rack
AS-RDB257	2.57M x 2M Diagonal Brace	2.57	10.9	150	Rack
AS-RDB307	3.07M x 2M Diagonal Brace	3.07	12.1	150	Rack
AS-RDB414	4.14M x 2M Diagonal Brace	4.14	14.7	150	Rack

RINGLOCK

Ringlock Steel Plank O-Type 0.32m

[Steel Plank O-Type 320mm]

Ringlock Steel Plank, Width:320mm, Height:76mm, Thickness:1.5mm. Steel Grade: S235, Surface treatment: Hot dip galvanized or Pre-galvanized.



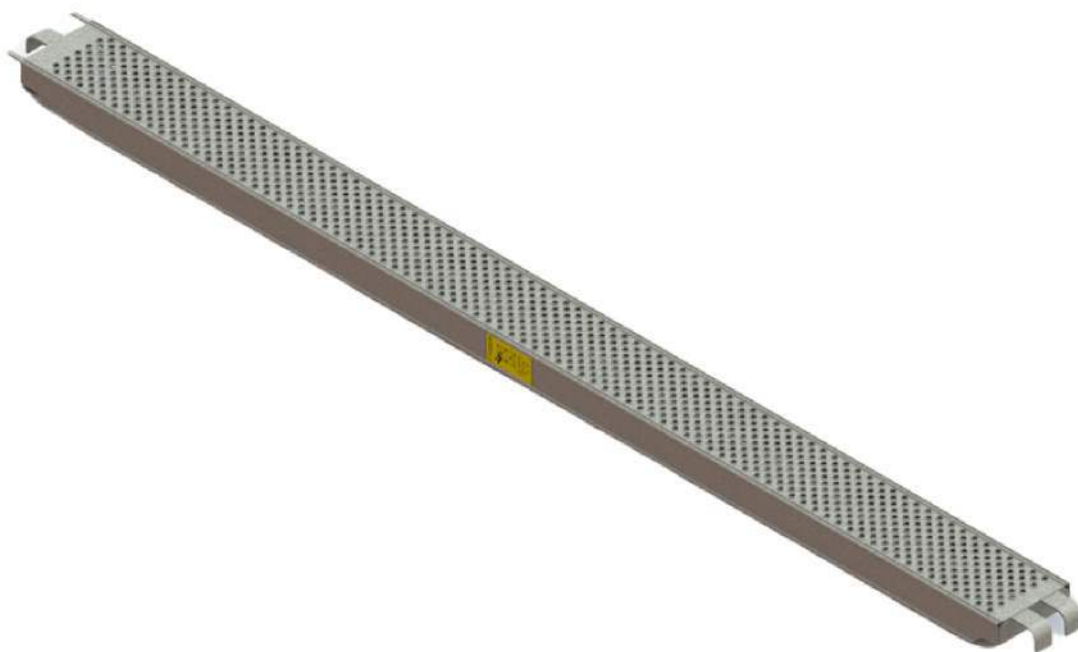
Item No.	Description	Length	Weight	Packaging	
		Meters	kgs	Qty.	Type
AS-RDEP073	0.73M O-Steel Plank	0.73	6.82	194	Rack
AS-RDEP109	1.09M O-Steel Plank	1.09	9.43	194	Rack
AS-RDEP140	1.40M O-Steel Plank	1.40	11.46	194	Rack
AS-RDEP157	1.57M O-Steel Plank	1.57	12.58	97	Rack
AS-RDEP207	2.07M O-Steel Plank	2.07	16.11	97	Rack
AS-RDEP257	2.57M O-Steel Plank	2.57	19.63	97	Rack
AS-RDEP307	3.07M O-Steel Plank	3.07	22.92	97	Rack

RINGLOCK

Ringlock Steel Plank O-Type 0.19m

[Steel Plank O-Type 190mm]

Ringlock Steel Plank, Width:190mm, Height:76mm, Thickness:1.5mm. Steel Grade: S235, Surface treatment: Hot dip galvanized or Pre-galvanized.



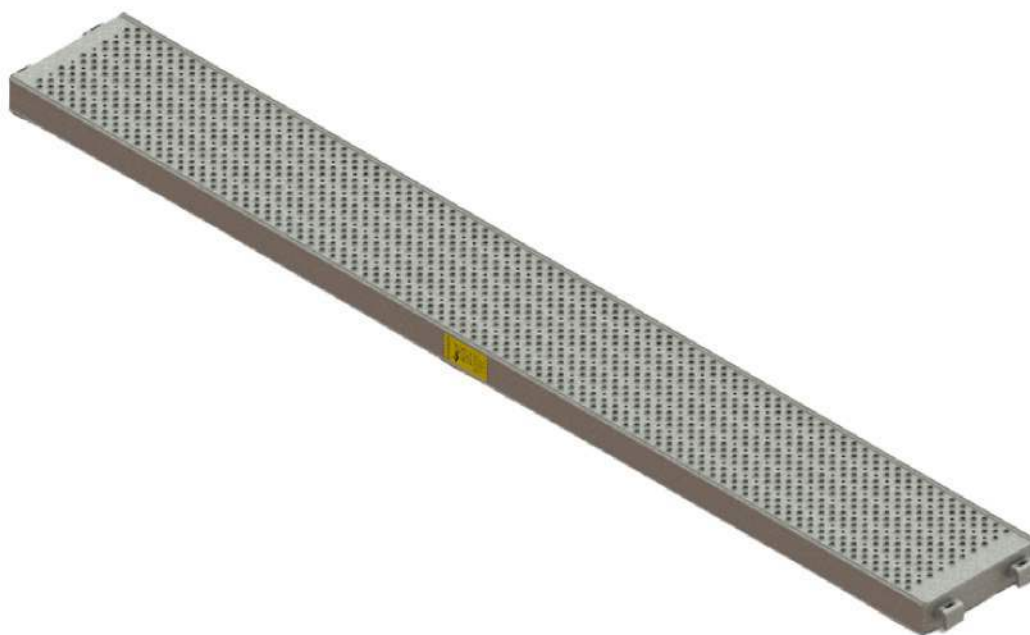
Item No.	Description	Length	Weight	Packaging	
		Meters	kgs	Qty.	Type
AS-RDEPS073	0.73M O-Steel Plank	0.73	4.83	300	Rack
AS-RDEPS109	1.09M O-Steel Plank	1.09	7.53	300	Rack
AS-RDEPS140	1.40M O-Steel Plank	1.40	8.96	300	Rack
AS-RDEPS157	1.57M O-Steel Plank	1.57	9.80	150	Rack
AS-RDEPS207	2.07M O-Steel Plank	2.07	12.50	150	Rack
AS-RDEPS257	2.57M O-Steel Plank	2.57	14.80	150	Rack
AS-RDEPS307	3.07M O-Steel Plank	3.07	17.10	150	Rack

RINGLOCK

Ringlock Steel Plank U-Type 0.32m

[Steel Plank U-Type 320mm]

Ringlock Steel Plank, Width:320mm, Height:76mm, Thickness:1.5mm. Steel Grade: S235, Surface treatment: Hot dip galvanized or Pre-galvanized.



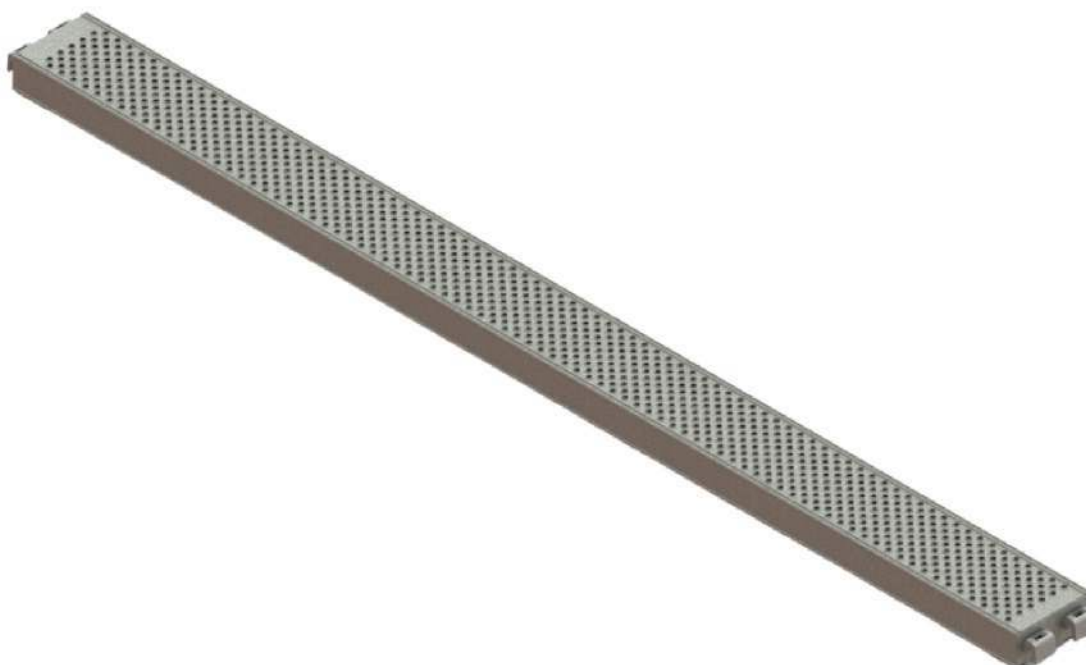
Item No.	Description	Length	Weight	Packaging	
		Meters	kgs	Qty.	Type
AS-RWP073	0.73M U-Steel Plank	0.73	5.76	194	Rack
AS-RWP109	1.09M U-Steel Plank	1.09	8.37	194	Rack
AS-RWP140	1.40M U-Steel Plank	1.40	10.41	194	Rack
AS-RWP157	1.57M U-Steel Plank	1.57	11.52	97	Rack
AS-RWP207	2.07M U-Steel Plank	2.07	15.05	97	Rack
AS-RWP257	2.57M U-Steel Plank	2.57	18.57	97	Rack
AS-RWP307	3.07M U-Steel Plank	3.07	21.86	97	Rack

RINGLOCK

Ringlock Steel Plank U-Type 0.19m

[Steel Plank U-Type 190mm]

Ringlock Steel Plank, Width:190mm, Height:76mm, Thickness:1.5mm. Steel Grade: S235, Surface treatment: Hot dip galvanized or Pre-galvanized.



Item No.	Description	Length	Weight	Packaging	
		Meters	kgs	Qty.	Type
AS-RWPS073	0.73M U-Steel Plank	0.73	4.50	300	Rack
AS-RWPS109	1.09M U-Steel Plank	1.09	6.40	300	Rack
AS-RWPS140	1.40M U-Steel Plank	1.40	8.02	300	Rack
AS-RWPS157	1.57M U-Steel Plank	1.57	8.92	150	Rack
AS-RWPS207	2.07M U-Steel Plank	2.07	11.57	150	Rack
AS-RWPS257	2.57M U-Steel Plank	2.57	14.22	150	Rack
AS-RWPS307	3.07M U-Steel Plank	3.07	16.87	150	Rack

RINGLOCK

Aluminum Plywood Access Decks

[Aluminum Plywood Access Decks 2.0m Lift O-Type]

Aluminum Plywood Access Decks is a complete stair unit with built-in landings.



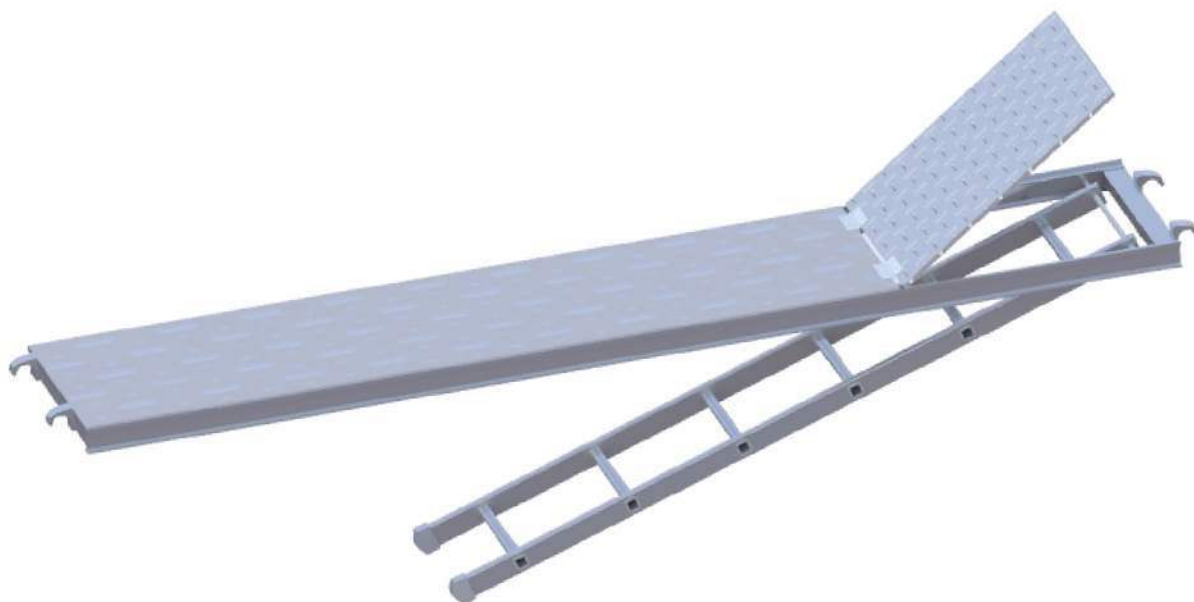
Item No.	Description	Length	Weight	Packaging	
		Meters	kgs	Qty.	Type
AS-RPAD109	1.09M Aluminum Plywood Access Deck	1.09x0.64	15.7	50	Rack
AS-RPAD157	1.57M Aluminum Plywood Access Deck	1.57x0.64	17.4	50	Rack
AS-RPDA207	2.07M Aluminum Plywood Access Deck	2.07x0.64	21.2	50	Rack
AS-RPAD257	2.57M Aluminum Plywood Access Deck	2.57x0.64	26.2	50	Rack
AS-RPAD307	3.07M Aluminum Plywood Access Deck	3.07x0.64	30.2	50	Rack

RINGLOCK

Aluminum Access Decks

[Aluminum Access Decks 2.0m Lift O-Type]

Aluminum Access Decks is a complete stair unit with built-in landings.



Item No.	Description	Length	Weight	Packaging	
		Meters	kgs	Qty.	Type
AS-RAAD109	1.09M Aluminum Access Deck	1.09x0.64	20.3	50	Rack
AS-RAAD157	1.57M Aluminum Access Deck	1.57x0.64	22.8	50	Rack
AS-RAAD207	2.07M Aluminum Access Deck	2.07x0.64	24.5	50	Rack
AS-RAAD257	2.57M Aluminum Access Deck	2.57x0.64	28.1	50	Rack
AS-RAAD307	3.07M Aluminum Access Deck	3.07x0.64	32.2	50	Rack

Ringlock Side Bracket

[Side/Hop-up Bracket O-Type]

The side/hop-up bracket is used to extend the working platform closer to the building structure. Steel Grade: S235 or S355. Surface treatment: Hot dip galvanized.



1 BOARD SIDE BRACKET



2/3 BOARD SIDE BRACKET

Item No.	Description	Length	Weight	Packaging	
		Meters	kgs	Qty.	Type
AS-RSB1	Side Bracket 1 board	0.42	4.9	110	Rack
AS-RSB2	Side Bracket 2 board	0.73	6.7	65	Rack
AS-RSB3	Side Bracket 3 board	1.09	9.0	50	Rack

RINGLOCK

Ringlock Side Bracket

[Side/Hop-up Bracket U-Type]

The side/hop-up bracket is used to extend the working platform closer to the building structure. Steel Grade: S235 or S355. Surface treatment: Hot dip galvanized.



Item No.	Description	Length	Weight	Packaging	
		Meters	kgs	Qty.	Type
AS-RSBU1	U-Side Bracket 1 board	0.42	7.20	110	Rack
AS-RSBU2	U-Side Bracket 2 board	0.73	9.10	65	Rack
AS-RSBU3	U-Side Bracket 3 board	1.09	11.20	50	Rack

RINGLOCK

Steel Toe Board

[Steel Toe Board-Bolted Type]

Steel Toe Board, Height: 150mm, S235 Steel sheet, Surface treatment: Pre-galvanized.



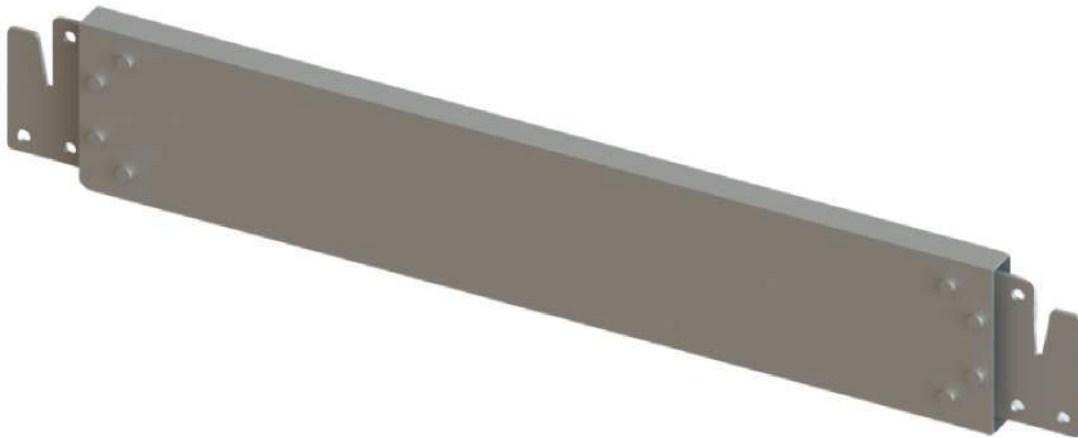
Item No.	Description	Length	Weight	Packaging	
		Meters	kgs	Qty.	Type
AS-RSTB073	0.73M Toe Board	0.73	2.15	280	Rack
AS-RSTB109	1.09M Toe Board	1.09	3.10	140	Rack
AS-RSTB140	1.40M Toe Board	1.40	3.90	140	Rack
AS-RSTB157	1.57M Toe Board	1.57	4.35	140	Rack
AS-RSTB207	2.07M Toe Board	2.07	5.64	140	Rack
AS-RSTB257	2.57M Toe Board	2.57	6.94	140	Rack
AS-RSTB307	3.07M Toe Board	3.07	8.24	140	Rack

RINGLOCK

Steel Toe Board

[Steel Toe Board-Hook Type]

Ringlock Steel Toe Board, Height:150mm, Steel Grade: S235. Surface treatment:Pre-galvanized.



Item No.	Description	Length	Weight	Packaging	
		Meters	kgs	Qty.	Type
AS-RSTBH073	0.73M Hook Toe Board	0.73	2.66	280	Rack
AS-RSTBH109	1.09M Hook Toe Board	1.09	3.69	140	Rack
AS-RSTBH140	1.40M Hook Toe Board	1.40	4.58	140	Rack
AS-RSTBH157	1.57M Hook Toe Board	1.57	5.05	140	Rack
AS-RSTBH207	2.07M Hook Toe Board	2.07	6.48	140	Rack
AS-RSTBH257	2.57M Hook Toe Board	2.57	7.90	140	Rack
AS-RSTBH307	3.07M Hook Toe Board	3.07	9.33	140	Rack

RINGLOCK

Wooden Toe Board

Ringlock Wood Toe Board, Wood. Width:150mm, Height:30mm,Wood



Item No.	Description	Length	Weight	Packaging	
		Meters	kgs	Qty.	Type
AS-RWTB073	0.73M Wooden Toe Board	0.73	3.14	280	Rack
AS-RWTB109	1..09M Wooden Toe Board	1.09	4.28	140	Rack
AS-RWTB140	1.40M Wooden Toe Board	1.40	5.25	140	Rack
AS-RWTB157	1.57M Wooden Toe Board	1.57	5.79	140	Rack
AS-RWTB207	2.07M Wooden Toe Board	2.07	7.36	140	Rack
AS-RWTB257	2.57M Wooden Toe Board	2.57	8.94	140	Rack
AS-RWTB307	3.07M Wooden Toe Board	3.07	10.51	140	Rack

RINGLOCK

Starter/ Base Collar

The base collar is the beginning of the Ringlock sca olding system. It sits upon a fixed or adjustable base.



Item No.	Description	Length		Weight		Packaging	
		Feet	Meters	kgs	Lbs	Qty.	Type
AS-RBC	Starter/Base Collar	1'-0"	0.3	1.8	3.96	385	Rack

RINGLOCK

Adjustable Base Jack

Ringlock adjustable base jack is used for leveling the sca old-standards at the same height. OD: 38.1x4.5mm. Base plate: 150x150x6mm. Surface treatment: Hot dip galva- nized or Electroplated.



Item No.	Description	Length	Weight	Packaging	
		Meters	kgs	Qty.	Type
AS-BJ24	24" Adjustable Base Jack	0.6	3.5	220	Rack

RINGLOCK

Swivel Base Jack

The swivel base jack can be used when standards need to be placed on slopes. OD: 38.1x4.5mm. Base plate: 150x150x6mm. Surface treatment: Hot dip galvanized or Elec- troplated.



Item No.	Description	Length	Weight	Packaging	
		Meters	kgs	Qty.	Type
AS-SBJ24	24" Swivel Base Jack	0.6	3.8	220	Rack

RINGLOCK

Adjustable Caster Adapter

Caster Adapter is mainly used for connecting caster wheel to the vertical pole.



Item No.	Description	Length	Weight	Packaging	
		Meters	kgs	Qty.	Type
AS-RACA	Adjustable Caster Adapert	0.25	4.0	144	Rack

RINGLOCK

Caster Wheel

Scaffolding caster wheel is used at bottom of scaffolding vertical tube, enabling the scaffolding system to be a mobile Platform.



Item No.	Description	Length		Weight	Packaging	
		Feet	Meters	kgs	Qty.	Type
AS-CW08	Caster Wheel 8"	8"	0.2	6.0	100	Rack
AS-CW12	Caster Wheel 12"	12"	0.3	16.0	40	Rack

RINGLOCK

U Head

U head is used for the support for steel beams. OD:38.1x4.5mm. Plate: 150x150x6mm. Surface Treatment: Hot dip galvanized or Electroplated.



Item No.	Description	Length	Weight	Packaging	
		Meters	kgs	Qty.	Type
AS-RUH600	U Head Jack 0.6M	0.6	4.4	220	Rack

RINGLOCK

Ringlock Lattice Beam

The Lattice beam have a high load-bearing capacity allows for bridging over larger span. Tube size: 48.3x3.2mm. Steel Grade: S235 or S355.Surface Treatment: Hot dip galvanized/Pre-galvanized



Item No.	Description	Length	Weight	Packaging	
		Meters	kgs	Qty.	Type
AS-RLB207	2.07M Lattice Beam	2.07	23.0	20	Bundle
AS-RLB257	2.57M Lattice Beam	2.57	28.5	20	Bundle
AS-RLB307	3.07M Lattice Beam	3.07	32.0	20	Bundle
AS-RLB414	4.14M Lattice Beam	4.14	43.2	20	Bundle
AS-RLB514	5.14M Lattice Beam	5.14	54.2	20	Bundle
AS-RLB614	6.14M Lattice Beam	6.14	63.3	20	Bundle

RINGLOCK

Guardrail Post/Standard

The guardrail Standard is designed to provide a vertical connection to secure Ledger. Surface treatment: Hot dip galvanized.

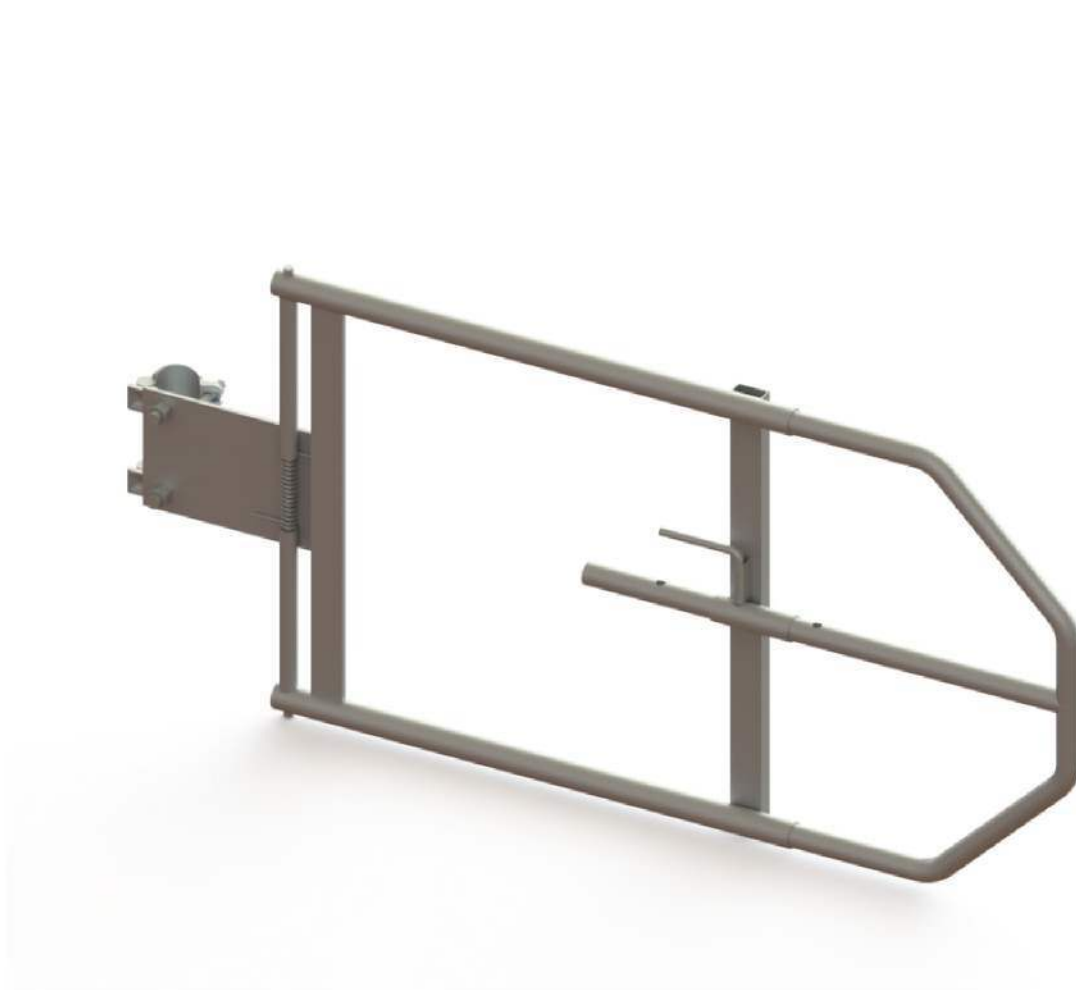


Item No.	Description	Length		Weight		Packaging	
		Feet	Meters	kgs	Lbs	Qty.	Type
AS-RGP	1.7M Guardrail Post	5'-6"	1.7	8.7	19.14	70	Rack

RINGLOCK

Safety Gate

The safety gate allows safe access to the working platform. The sprung gate mechanism ensures that the access opening remains fully closed when the scaffold is in use.



Item No.	Description	Length	Weight	Packaging	
		Meters	kgs	Qty.	Type
AS-ASG	Adjustable Swing Gate	0.5	8.7	34	Rack

RINGLOCK

Steel Platform Stair

[Steel Stair with Handrails 2.0m Lift O-Type]

Steel Stair with Handrails, 500mm Width, Q235 Steel, Hot Dip Galvanized



Item No.	Description	Length	Weight	Packaging	
		Meters	kgs	Qty.	Type
AS-RSS257	2.57m Steel Stair	2.57*0.6	80	10	Rack
AS-RSS307	3.07m Steel Stair	3.07*0.6	95	10	Rack

RINGLOCK

Aluminum Platform Stair

[Aluminum Platform Stair 2.0m Lift O-Type]

Aluminium Platform Stair O-Type is a complete stair unit with built-in landings.

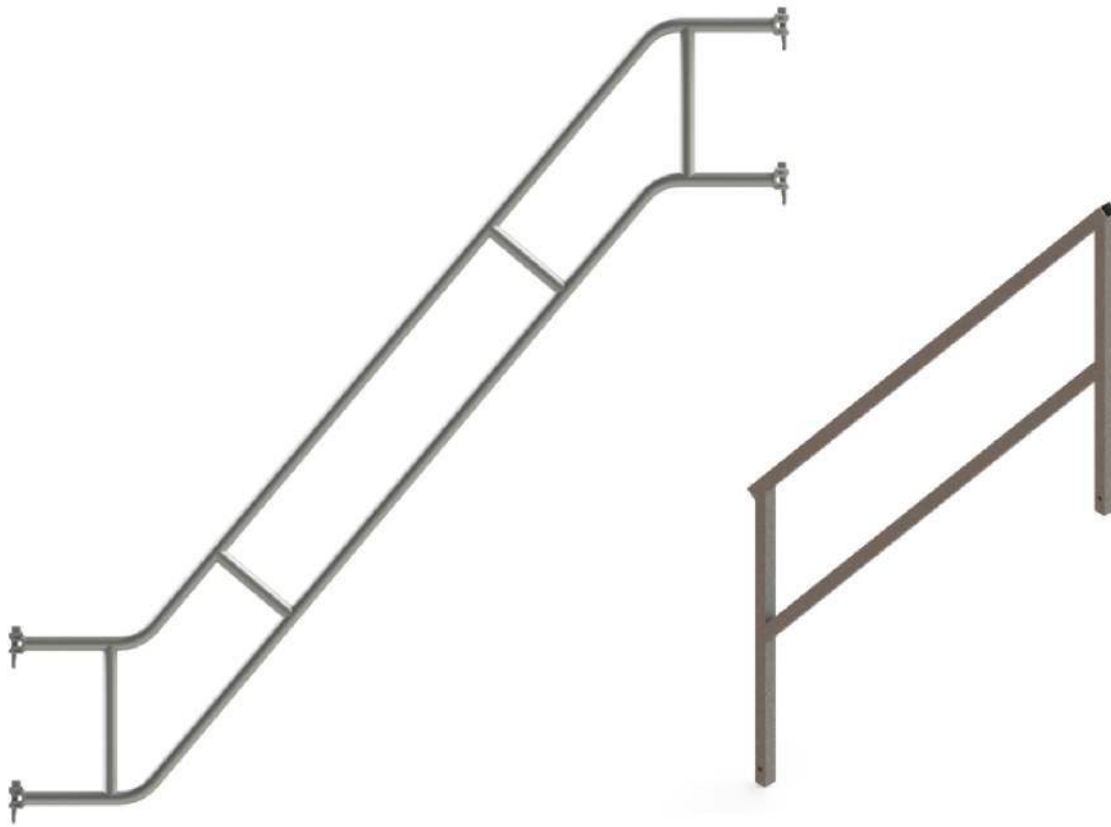


Item No.	Description	Length	Weight	Packaging	
		Meters	kgs	Qty.	Type
AS-RAPS257	Aluminum Platform Stair	2.57*0.6	28	10	Rack
AS-RAPS307	Aluminum Platform Stair	3.07*0.6	33	10	Rack

RINGLOCK

Platform Stair Handrails

The platform stair handrails are used to provide handrails on the inner side and outer side of the Aluminium Stair Platforms.

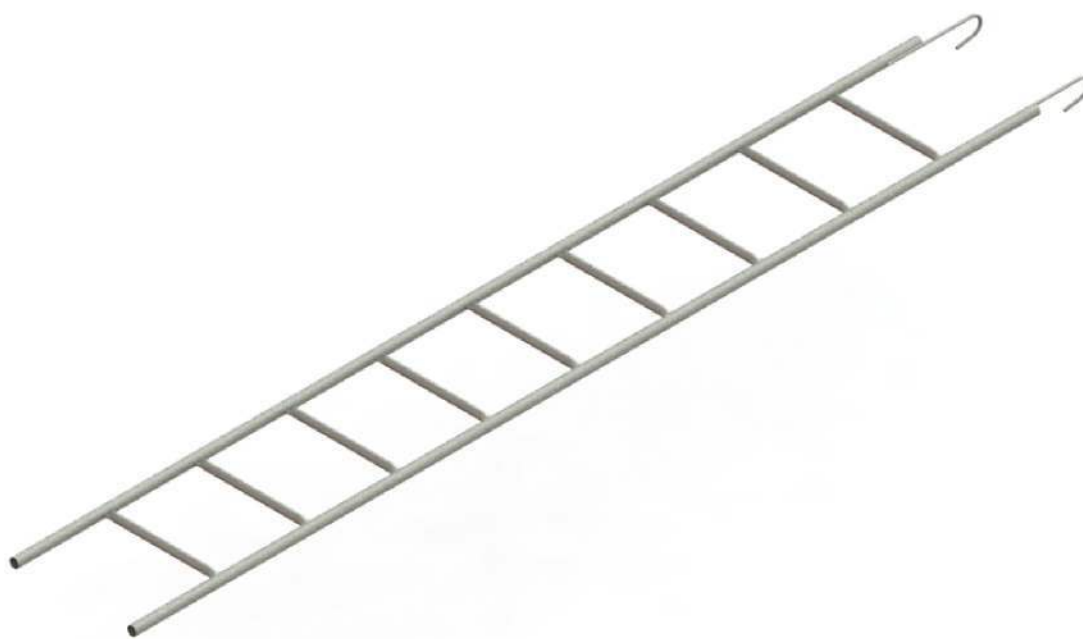


Item No.	Description	Length	Weight	Packaging	
		Meters	kgs	Qty.	Type
AS-ROH257	Outer Handrail	2.57x2.0	23	20	Rack
AS-ROH307	Outer Handrail	3.07x2.0	25	20	Rack
AS-RIH	Intermediate Handrail	2.57/3.57x2.0	11.5	20	Rack

RINGLOCK

Monkey Ladder

The Monkey Ladder, Tube Size: OD42x2mm, Steel Type: Q235. Surface Treatment: Hot dip galvanized. It is designed to provide safe access to the various deck levels.

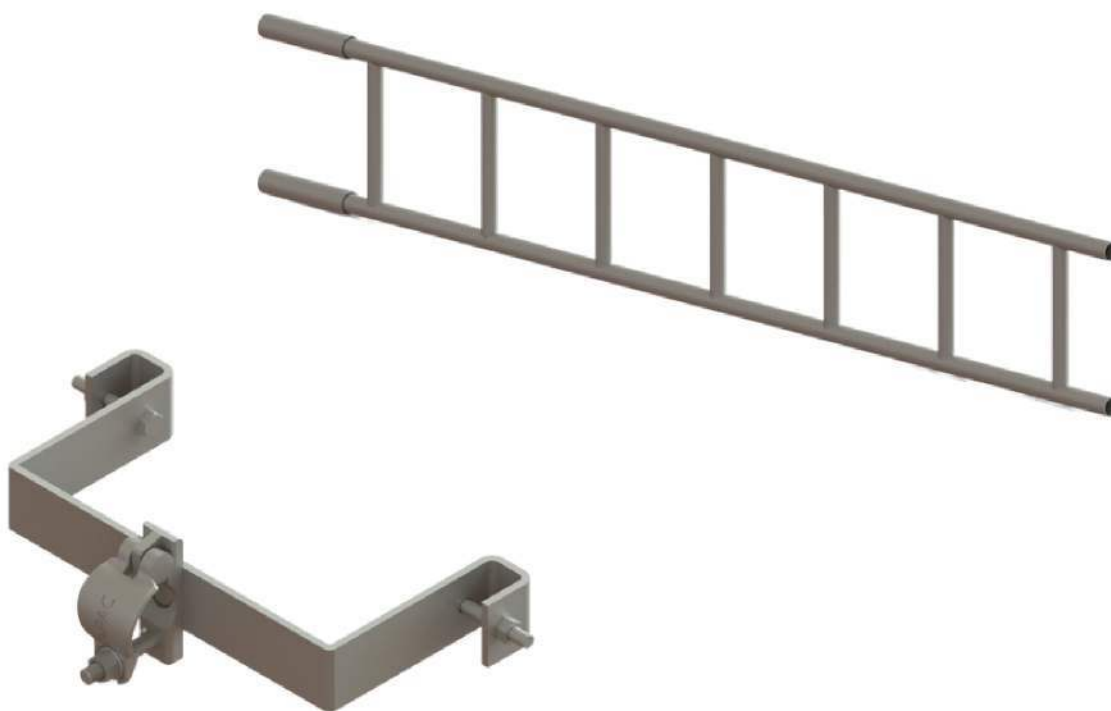


Item No.	Description	Length	Weight	Packaging	
		Meters	kgs	Qty.	Type
AS-RML25	2.5m Monkey Ladder	2.5	14.5	25	Bundle
AS-RML30	3.0m Monkey Ladder	3.0	17.5	25	Bundle
AS-RML35	3.5m Monkey Ladder	3.5	20.5	25	Bundle
AS-RML40	4.0m Monkey Ladder	4.0	23.5	25	Bundle
AS-RML45	4.5m Monkey Ladder	4.5	26.5	25	Bundle
AS-RML50	5.0m Monkey Ladder	5.0	29.5	25	Bundle

RINGLOCK

Ladder and Ladder Bracket

The Ladder is designed to attach (using Ladder Brackets) on the inside or outside of a sca old to provide safe access to the various deck levels.



Item No.	Description	Length	Weight	Packaging	
		Meters	kgs	Qty.	Type
AS-RL1	1.0M Ladder	1.0	9.8	25	Rack
AS-RL2	2.0M Ladder	2.0	15.0	25	Rack
RS-RL3	3.0M Ladder	3.0	18.6	25	Rack
AS-LB	Ladder Bracket	0.43	3.2	170	Rack

RINGLOCK

Ringlock Adapter Clamp

The spigot Adapter Clampp (I-Bolt) allows the connecction of Ringlcok Standards at intermediate locations along the length of O-Type Ledgers, Truss Ledgers and Girders.

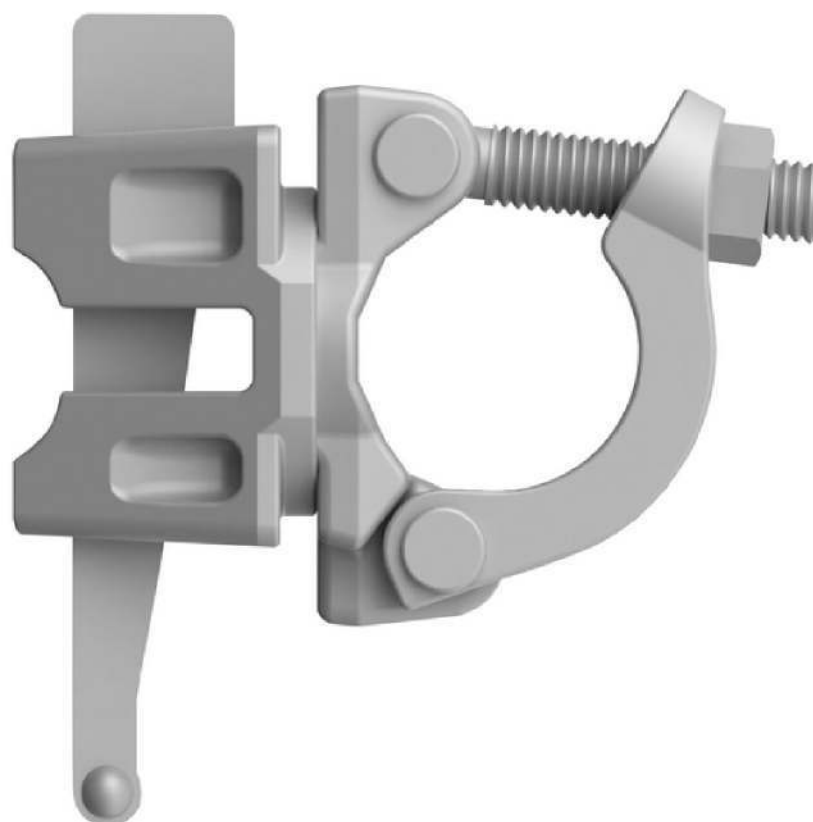


Item No.	Description	Weight	Packaging	
		kgs	Qty.	Type
AS-RSC	Spigot Adapter Clamp (I- Bolt)	1.86	500	Rack + Insert

RINGLOCK

Right Angle Adapter Clamp

The right angle wedge head coupler is designed to easily join a sca old tube directly to the rosette at 90 degrees.



Item No.	Description	Weight	Packaging	
		kgs	Qty.	Type
AS-RWR	Wedge head coupler, right angle, 1 bolt	1.80	650	Rack + Insert

RINGLOCK

Wedge Head Swivel Coupler

The swivel adapter clamp is designed to easily join a sca old tube to the rosette of a Ringlock sca old producing a variety of angles and configurations.

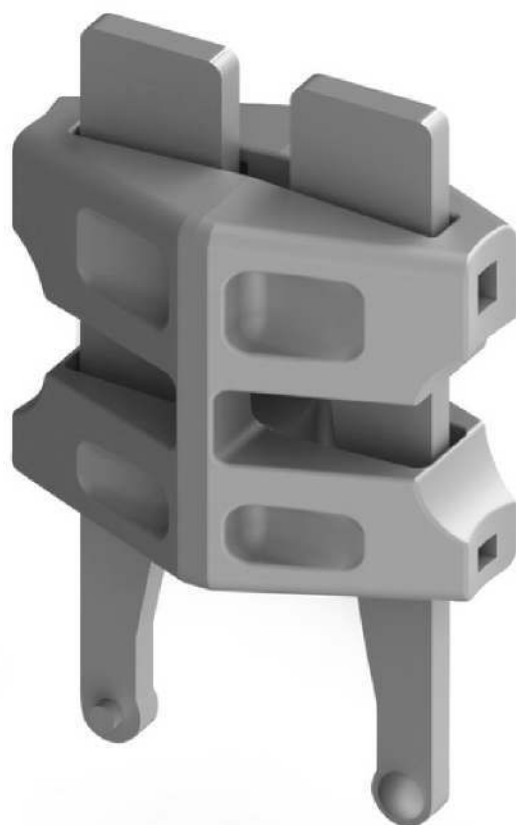


Item No.	Description	Weight	Packaging	
		kgs	Qty.	Type
AS-RWS	Wedge head coupler, swivel, 1 bolt	1.80	650	Rack + Insert

RINGLOCK

Wedge Head Coupler

Wedge head coupler allows the connection of ringlock standards to enforce its strength.

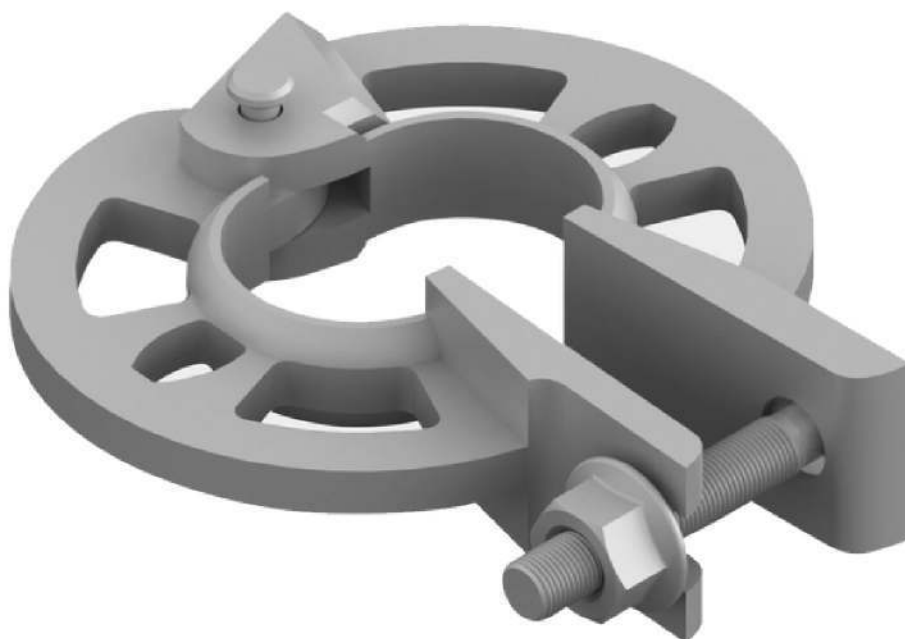


Item No.	Description	Weight	Packaging	
		kgs	Qty.	Type
AS-WHC	Wedge head coupler	1.20	650	Rack + Insert

RINGLOCK

Rosette Clamp

The rosette clamp is used to add a rosette at any point on a vertical standard or tube.

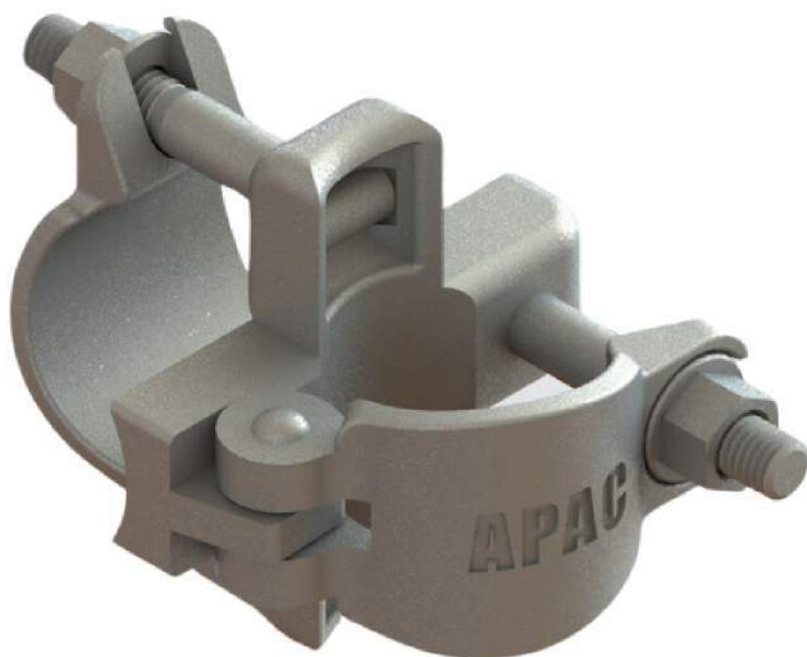


Item No.	Description	Weight	Packaging	
		kgs	Qty.	Type
AS-RRC	Rosette Clamp, 22mm	1.20	850	Rack + Insert

RINGLOCK

Right Angle Clamp

The Right Angle Clamp British is designed to be used in conjunction with sca old tube to create 90 degree angles.

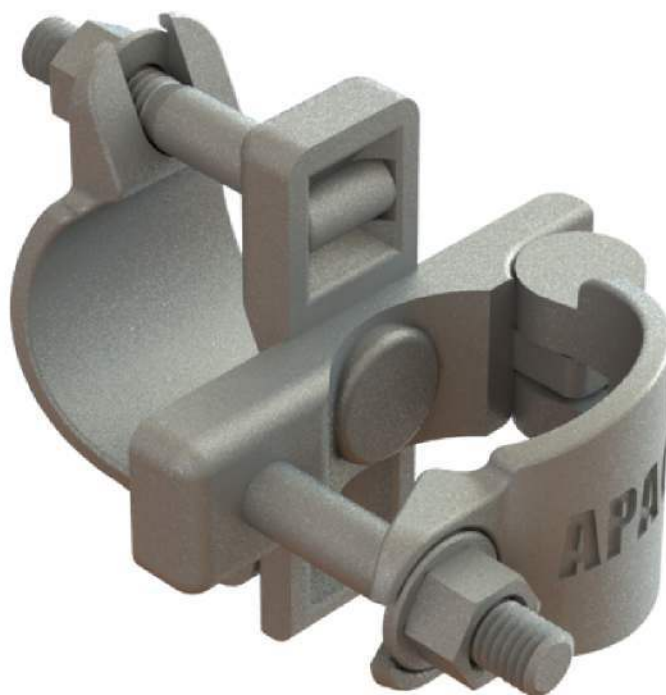


Item No.	Description	Weight	Packaging	
		kgs	Qty.	Type
AS-RACI	Right Angle Clamp (I-Bolt)	1.0	1000	Rack + Insert

RINGLOCK

Swivel Clamp

The Swivel Clamp (I-Bolt or Wedge) is designed to be used in conjunction with scaffold tube to create a variety of angles.

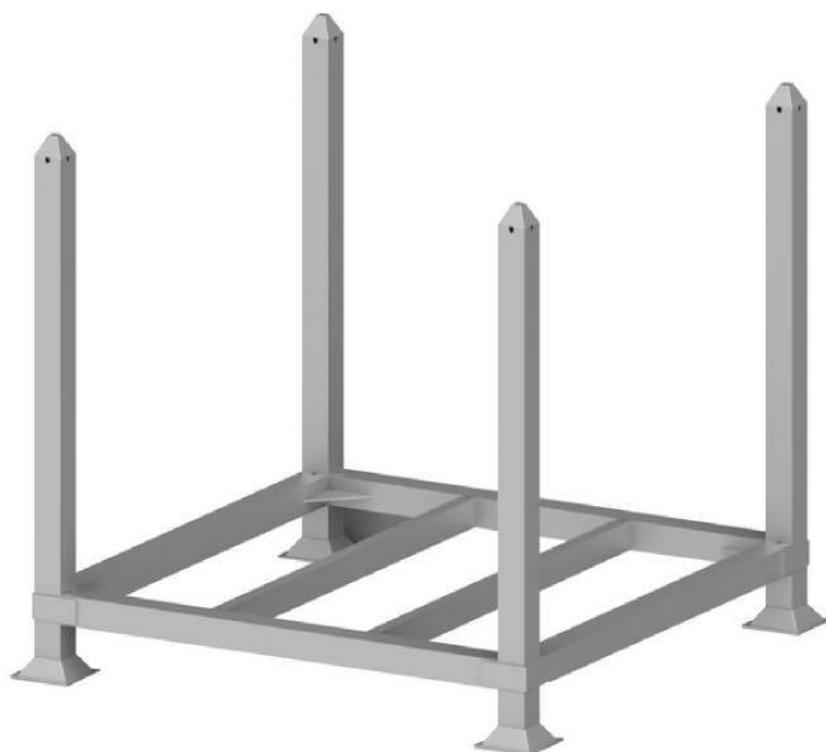


Item No.	Description	Weight	Packaging	
		kgs	Qty.	Type
AS-SCI	Swivel Clamp (I-Bolt)	1.1	1000	Rack + Insert

RINGLOCK

Scaffold Rack

The scaffold rack is designed to load scaffolding components for transportation.



Item No.	Description	Weight	Packaging	
		kgs	Qty.	Type
AS-SR1	Scaffold Rack 1.06x1.06x0.87M	46	1	Rack
AS-SR2	Scaffold Rack 1.06x1.06x1.10M	55	1	Rack

RINGLOCK

Scaffold High Rack

The scaffold High rack is designed for steel planks.

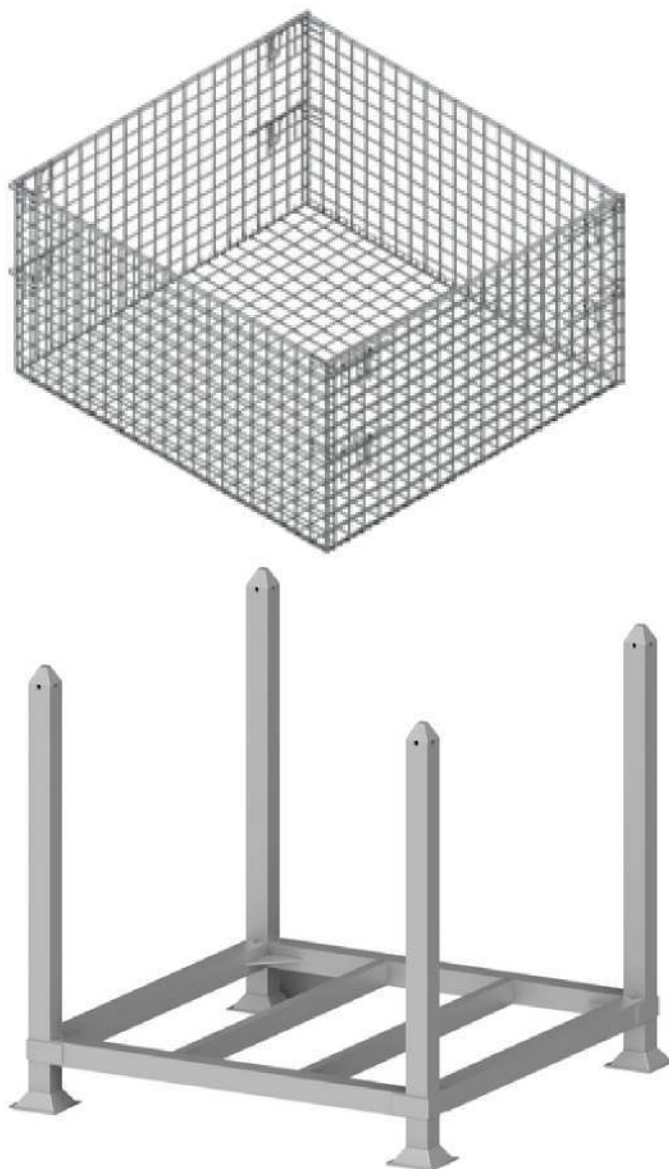


Item No.	Description	Weight	Packaging	
		kgs	Qty.	Type
AS-SHR1	Scaffold High Rack 1.5x1.095x2.0M	80	1	Rack
AS-SHR2	Scaffold High Rack 2.0x1.095x2.0M	85	1	Rack

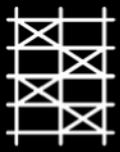
RINGLOCK

Scaffold Cage Insert

The scaffold cage insert is designed to fit into the storage rack, to create the Basket for storage of clamps and accessories.



Item No.	Description	Weight	Packaging	
		kgs	Qty.	Type
AS-SCI	Scaffold Cage Insert (44"*44"*34")	30	1	Rack



SCAFFOLDING
— BY APAC GROUP —

RINGLOCK SYSTEM

U.K, Australia and New Zealand

[ADDRESS]

388 Dongwu South Rd.,
Suzhou City, R.P China
215168

[Phone]

+86 512 6670 0084

[EMAIL]

info@apacscaffold.com

[WEB]

www.apacscaffold.com

